

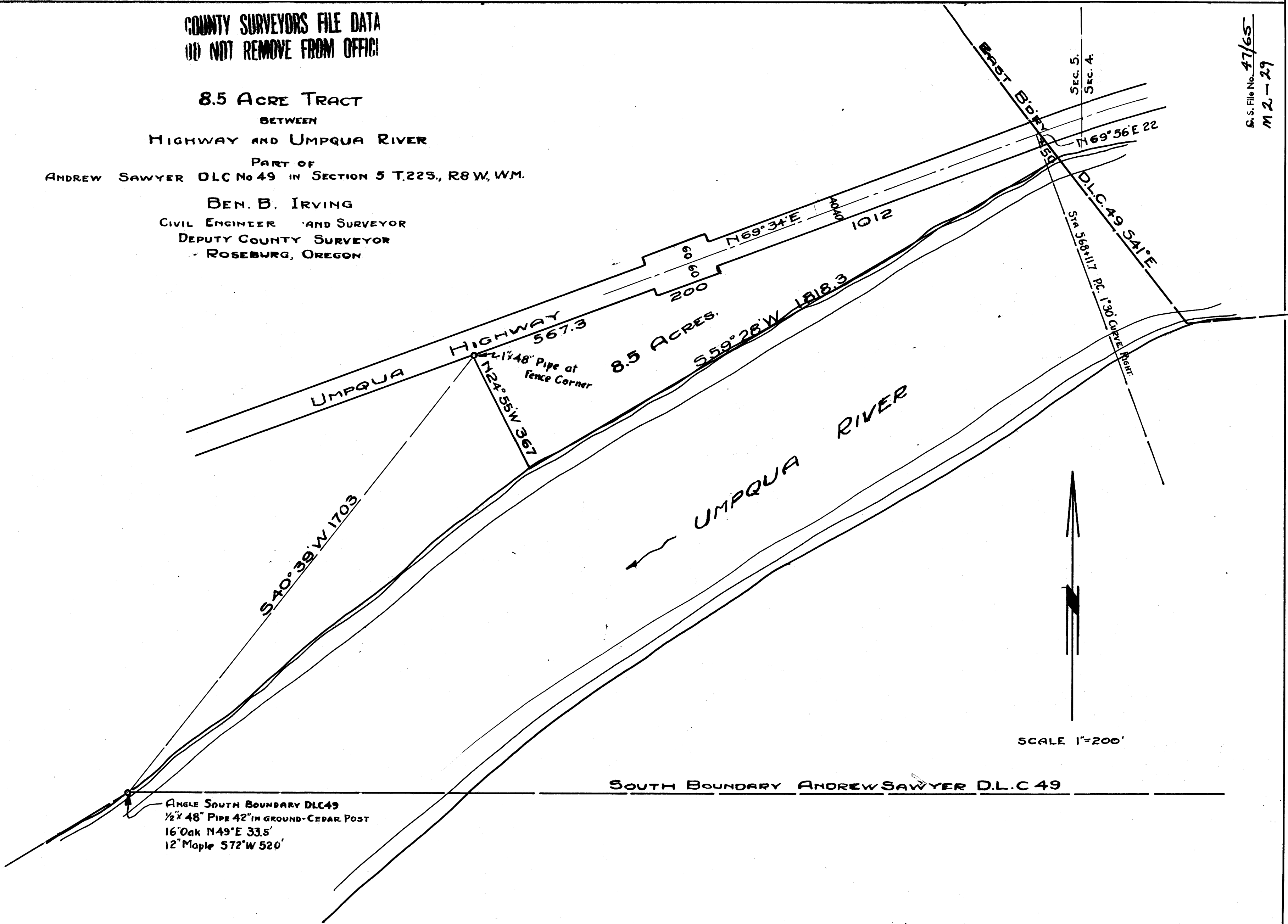
COUNTY SURVEYORS FILE DATA
DO NOT REMOVE FROM OFFICE

8.5 ACRE TRACT
BETWEEN
HIGHWAY AND UMPQUA RIVER

PART OF
ANDREW SAWYER D.L.C. No 49 IN SECTION 5 T.22S., R.8W., W.M.

BEN. B. IRVING
CIVIL ENGINEER AND SURVEYOR
DEPUTY COUNTY SURVEYOR
ROSEBURG, OREGON

S. S. File No. 47/65
M 2-29



M 2-29