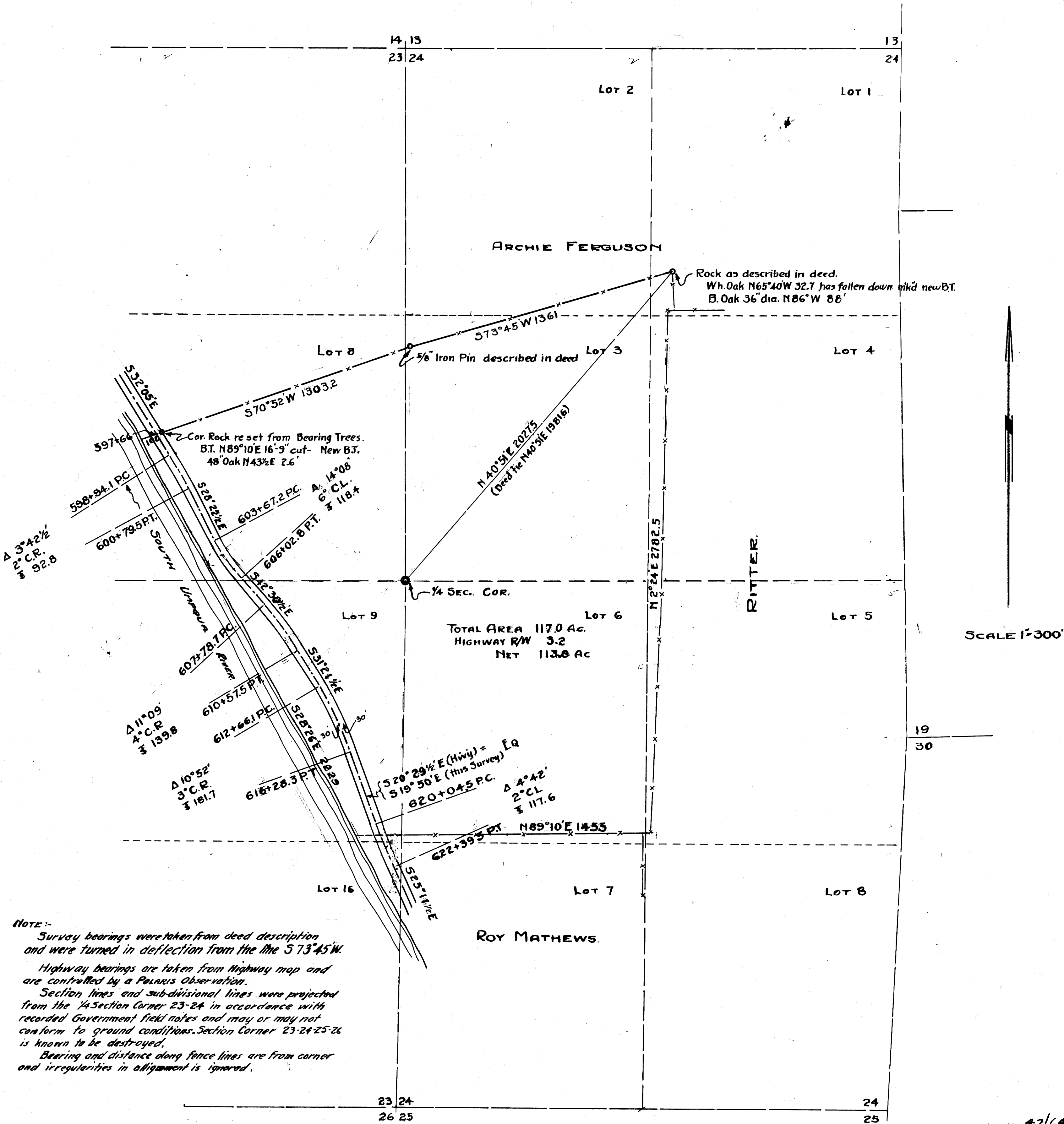


WORLD WAR VETERANS STATE AID COMMISSION.
MAP OF RHOADS PROPERTY
SECS. 23 & 24, T.30S., R.4W., W.M.
SHOWING EXTERIOR BOUNDARIES AS FENCED
AND
LOCATION OF HIGHWAY

BEN. B. IRVING ENGINEER AND SURVEYOR.
ROSEBURG, OREGON
MAY 1941



NOTE:-
 Survey bearings were taken from deed description and were turned in deflection from the line S 73° 45' W.
 Highway bearings are taken from Highway map and are controlled by a Polaris Observation.
 Section lines and sub-divisional lines were projected from the 1/4 Section Corner 23-24 in accordance with recorded Government field notes and may or may not conform to ground conditions. Section Corner 23-24-25-26 is known to be destroyed.
 Bearing and distance along fence lines are from corner and irregularities in alignment is ignored.