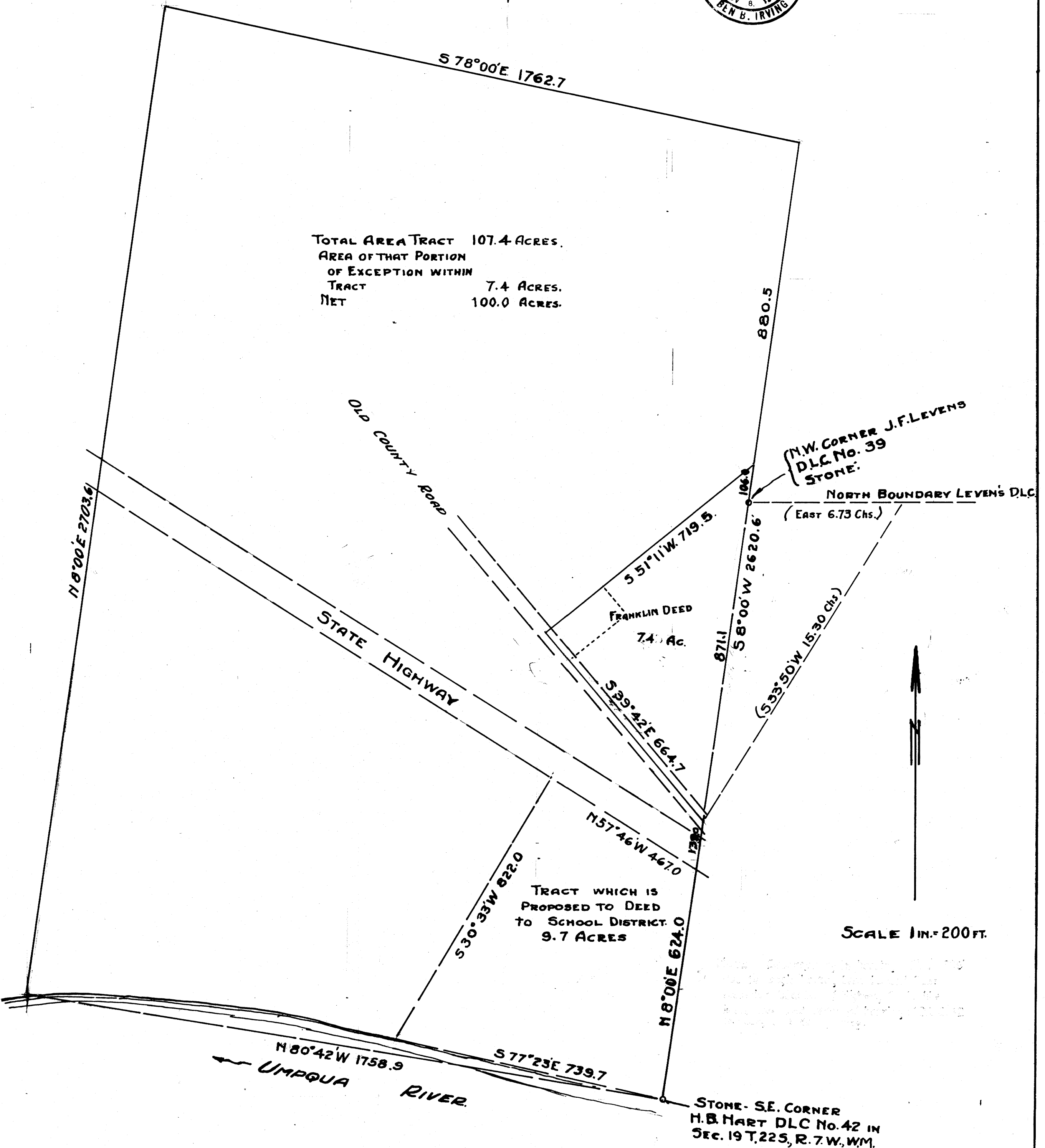


COUNTY SURVEYORS FILE DATA
DO NOT REMOVE FROM OFFICE

OLIVER HAINES' PROPERTY

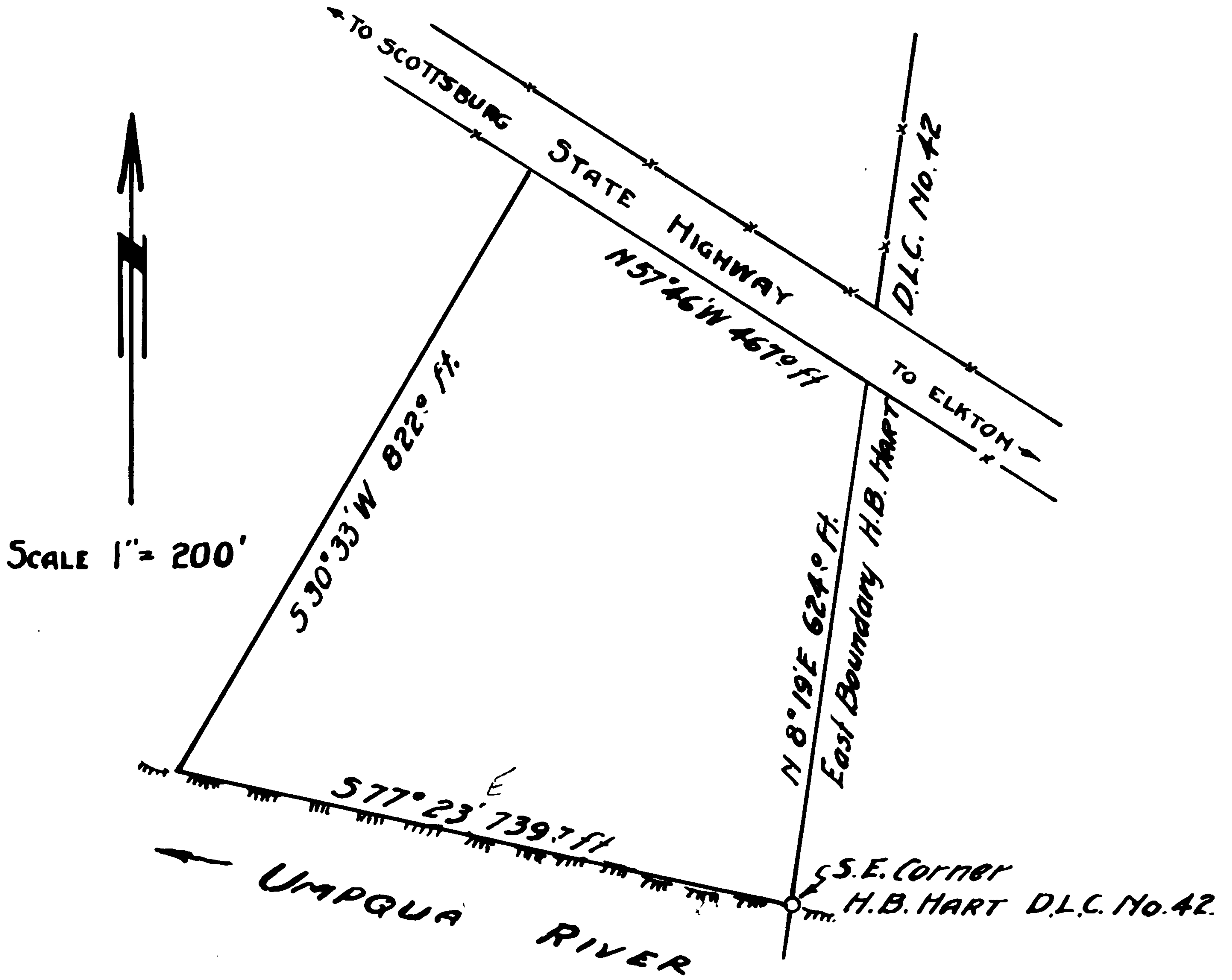
EAST PART H. B. HART, D.L.C. No. 42
T. 22 S., R. 7 W., W.M.

SURVEYED BY
BEN. B. IRVING.
CIVIL ENGINEER & SURVEYOR
ROSEBURG, OREGON.
JANUARY 21, 1941



TOTAL AREA TRACT 107.4 ACRES.
AREA OF THAT PORTION
OF EXCEPTION WITHIN
TRACT 7.4 ACRES.
NET 100.0 ACRES.

SCALE 1 IN. = 200 FT.



TRACT SOLD TO
 ELKTON SCHOOL DISTRICT
 BEING PART OF
 H.B. HART D.L.C. No. 42.
 T. 22.S., R. 7.W., W.M.

COUNTY JURY...
 DO NOT REMOVE FROM...
 BEN. B. IRVING,
 CIVIL ENGINEER & SURVEYOR.
 ROSEBURG, OREGON.

CS FILE FOLDER

CONTAINS

MORE

INFORMATION