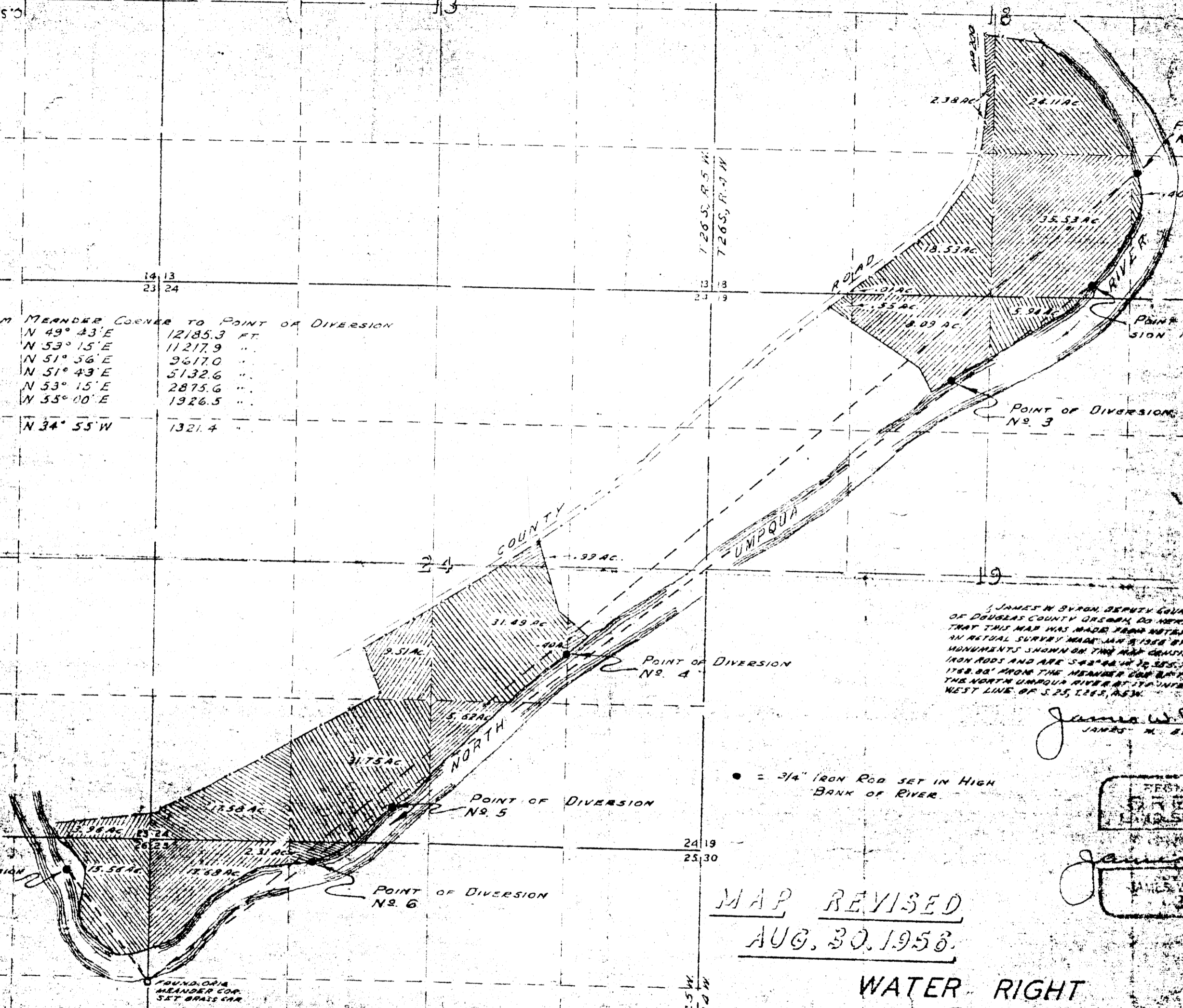


M 2-24  
C.S. FILE NO. 47/60

TIE FROM MEANDER CORNER TO POINT OF DIVERSION

No. 1 -	N 49° 43' E	12185.3 FT.
2 -	N 53° 15' E	11217.9 "
3 -	N 51° 56' E	9617.0 "
4 -	N 51° 43' E	5132.6 "
5 -	N 53° 15' E	2875.6 "
6 -	N 55° 00' E	1926.5 "
7 -	N 34° 55' W	1321.4 "



JAMES W. BYRON, DEPUTY COUNTY SURVEYOR OF DOUGLAS COUNTY OREGON, DO HEREBY CERTIFY THAT THIS MAP WAS MADE FROM NOTES TAKEN DURING AN ACTUAL SURVEY MADE JAN 5, 1958 BY ME AND MONUMENTS SHOWN ON THIS MAP IDENTIFIED BY IRON RODS AND ARE 542.88 IN TO 325.70 IN FROM 178.80' FROM THE MEANDER CORNER BY THE LINE THE NORTH UMPQUA RIVER AT ITS INTERSECTION WITH WEST LINE OF S 25, T 26 S, R 5 W.

James W. Byron  
JAMES W. BYRON

REGISTERED  
FRED M. DARBY  
COUNTY SURVEYOR

James W. Byron  
JAMES W. BYRON

MAP REVISED  
AUG. 30, 1958.

WATER RIGHT  
FOR  
EDWARD KOHLHAGEN  
SECTION 23, 24, 25 & 26 T 26 S, R 5 W W 1/4  
SECTION 18 & 19 T 26 S, R 4 W W 1/4  
OFFICE OF  
FRED M. DARBY  
COUNTY SURVEYOR, DOUGLAS COUNTY  
ROSEBURG, OREGON

COUNTY SURVEYORS FILE  
DO NOT REMOVE FROM FILE

M 2-24

M 2-24