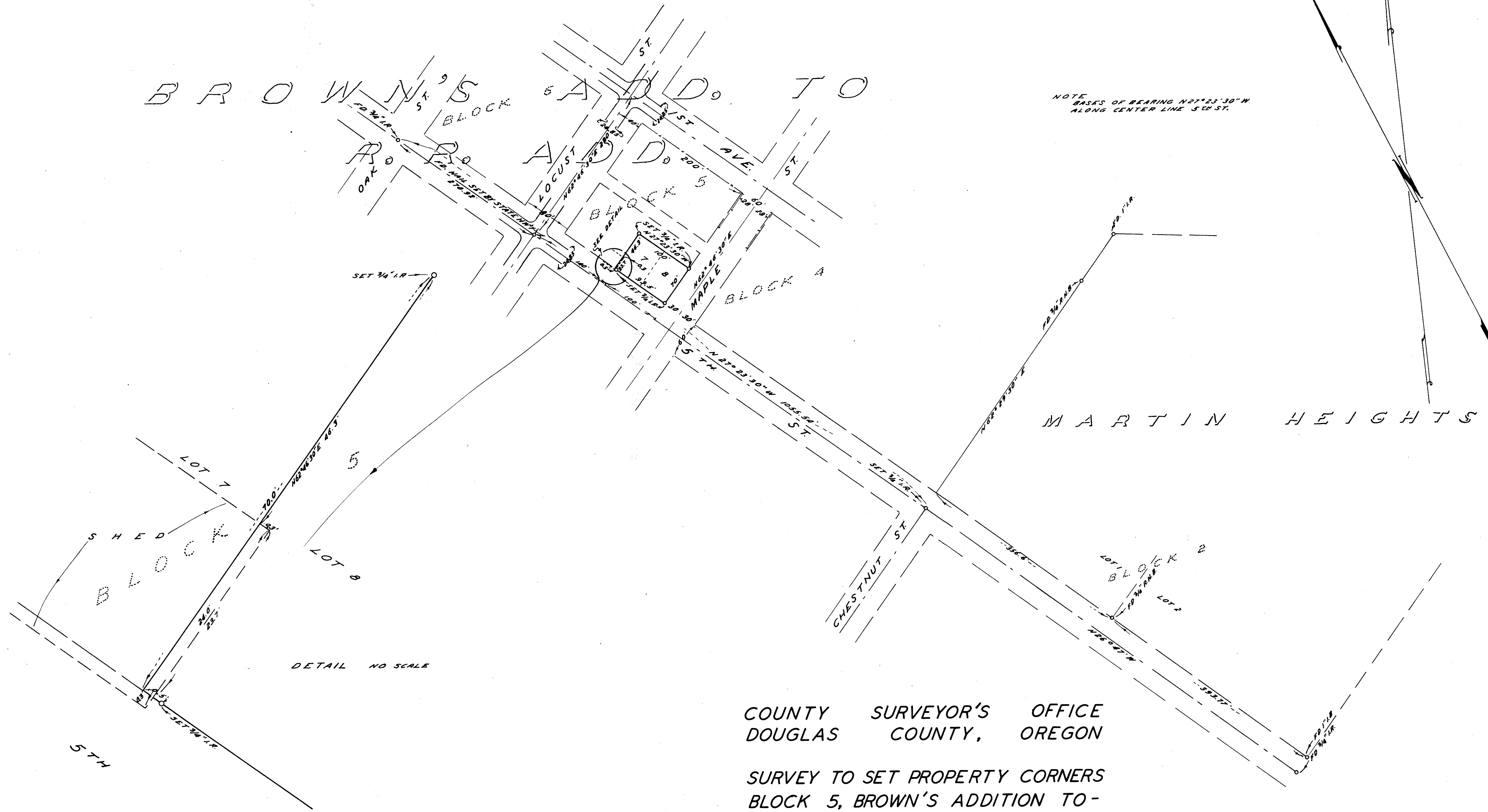
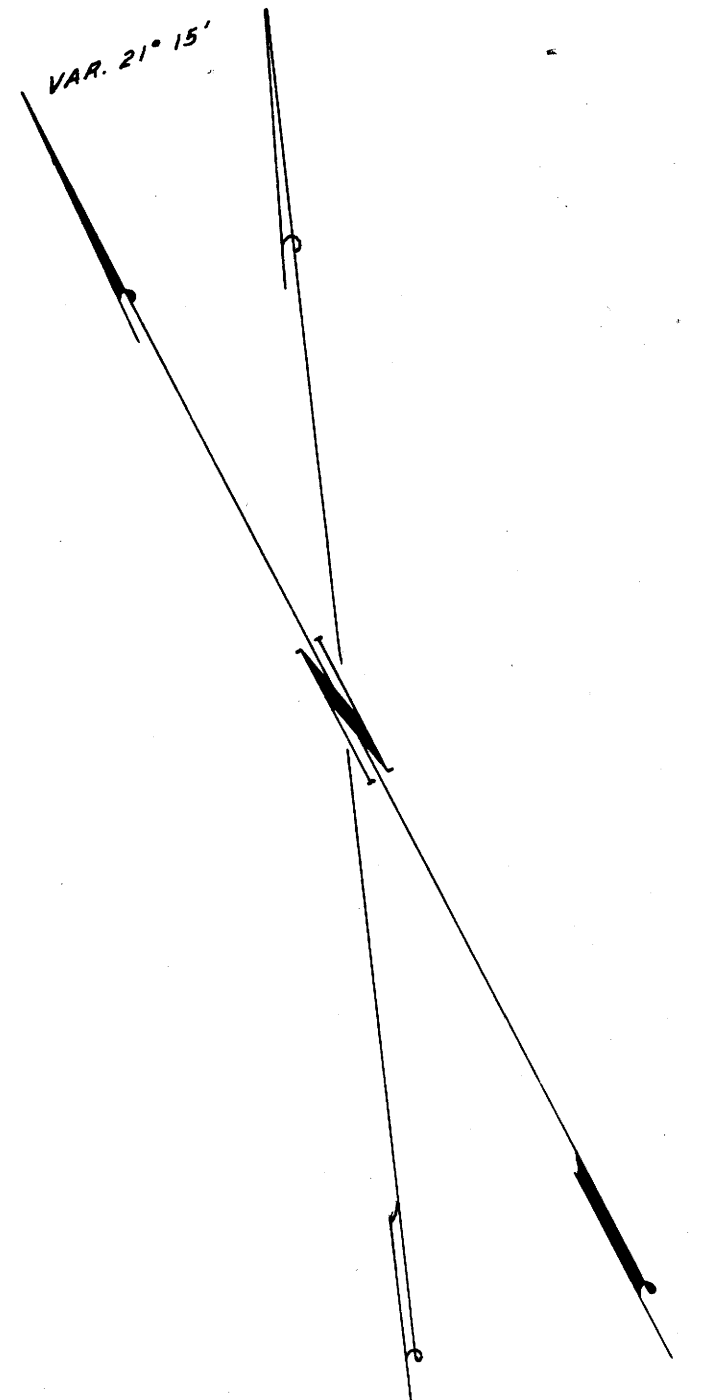


BROWN'S ADDITION TO

NOTE
BASIS OF BEARING N 27° 23' 30" W
ALONG CENTER LINE 5TH ST.



DETAIL NO SCALE

COUNTY SURVEYOR'S OFFICE
DOUGLAS COUNTY, OREGON

SURVEY TO SET PROPERTY CORNERS
BLOCK 5, BROWN'S ADDITION TO -
RAILROAD ADDITION TO - OAKLAND
FRED M DARBY COUNTY SURVEYOR
SURVEYED MAR. 23, 1956 BY
JAMES W. BYRON - DEPUTY SCALE 1" = 100'
SURVEYED FOR C. T. CLARKE

REGISTERED
OREGON
LAND SURVEYOR

JAMES W. BYRON
NOV. 6, 1853
JAMES W. BYRON
303

COUNTY SURVEYORS FILE DATA
DO NOT REMOVE FROM OFFICE