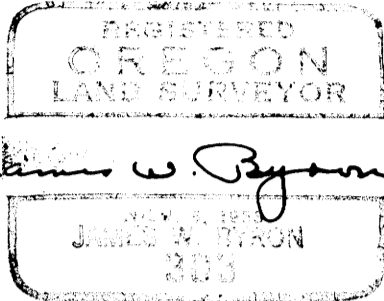


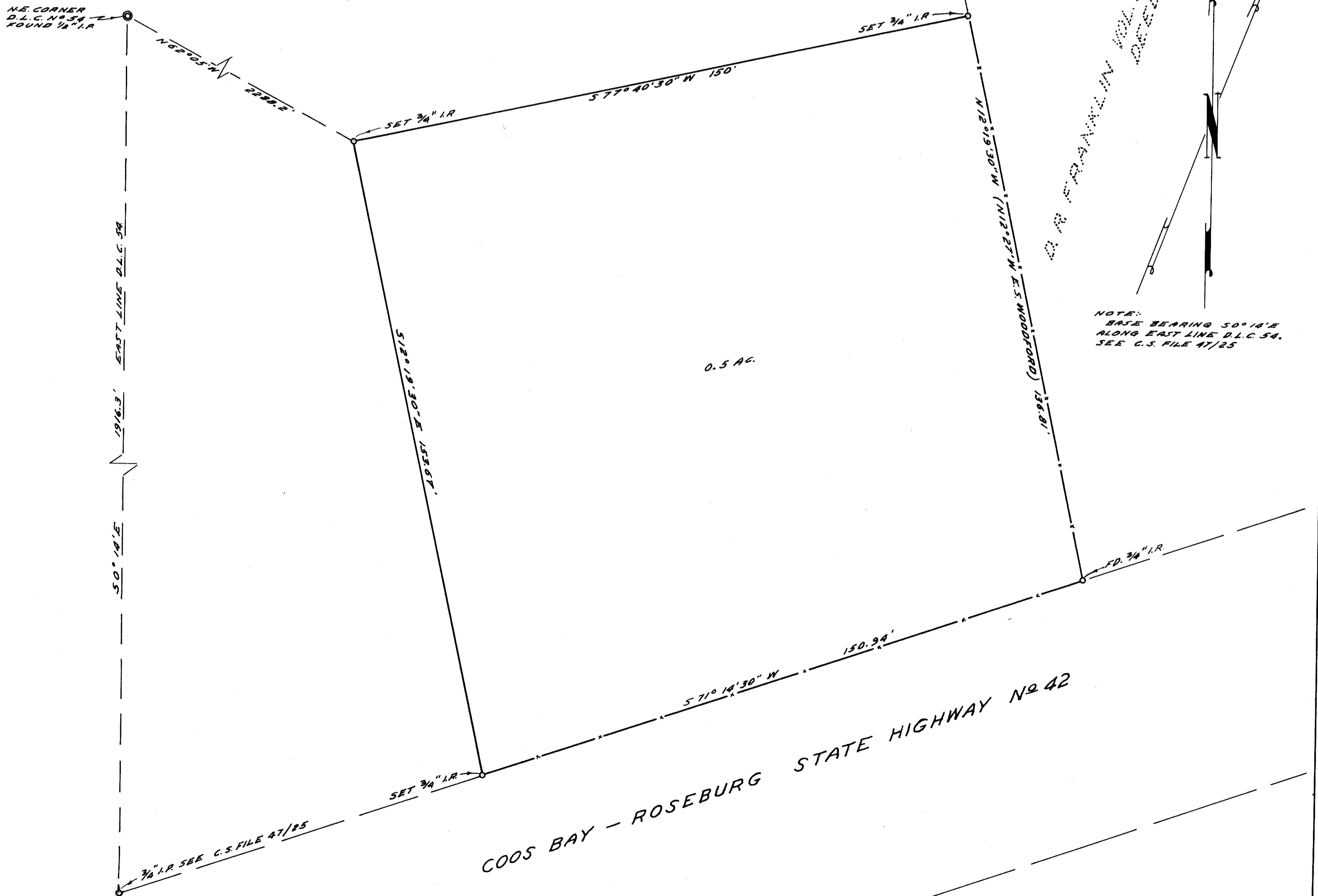
COUNTY SURVEYOR'S OFFICE
DOUGLAS COUNTY, OREGON

COUNTY SURVEYORS FILE DATA
DO NOT REMOVE FROM OFFICE

SURVEY FOR DEED DESCRIPTION
SECTION 28, T28S., R7W. W.M.



FRED M. DARBY COUNTY SURVEYOR
SURVEYED JAN. 30, 1956 BY
JAMES W. BYRON - DEPUTY SCALE 1" = 20'
SURVEYED FOR L. J. LENGELE



NOTE:
BASE BEARING 50° 18' E
ALONG EAST LINE D.L.C. 54.
SEE C.S. FILE 47/25