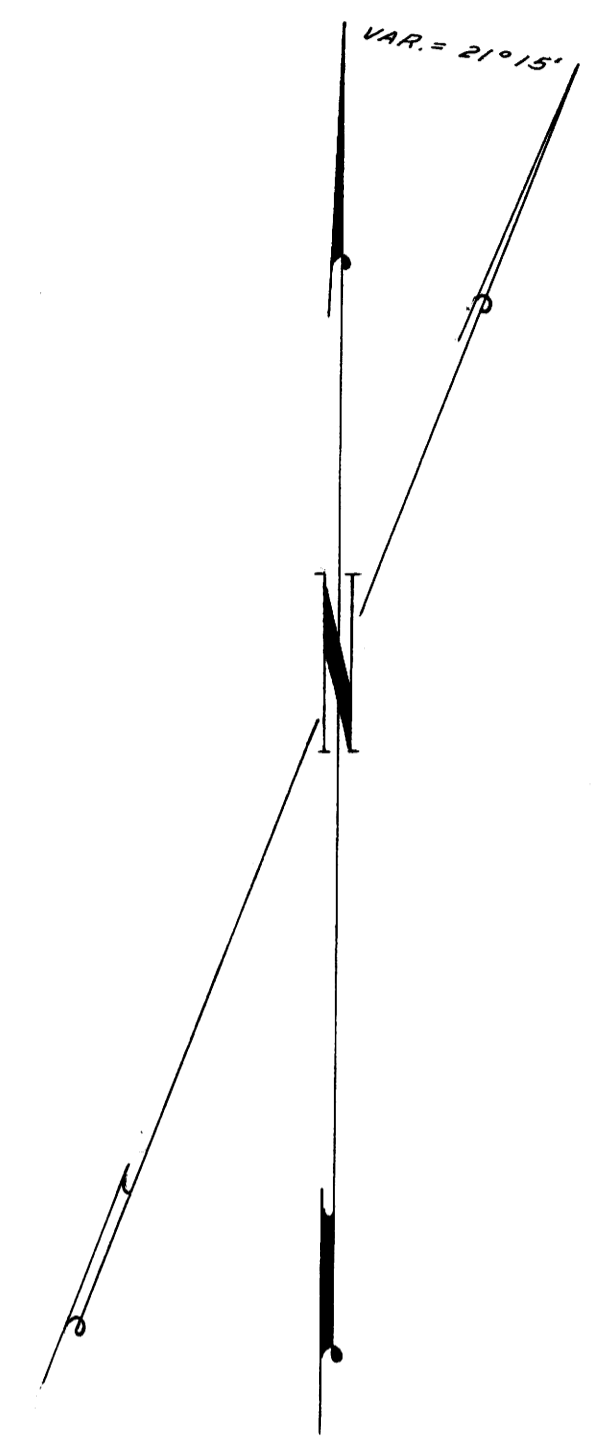
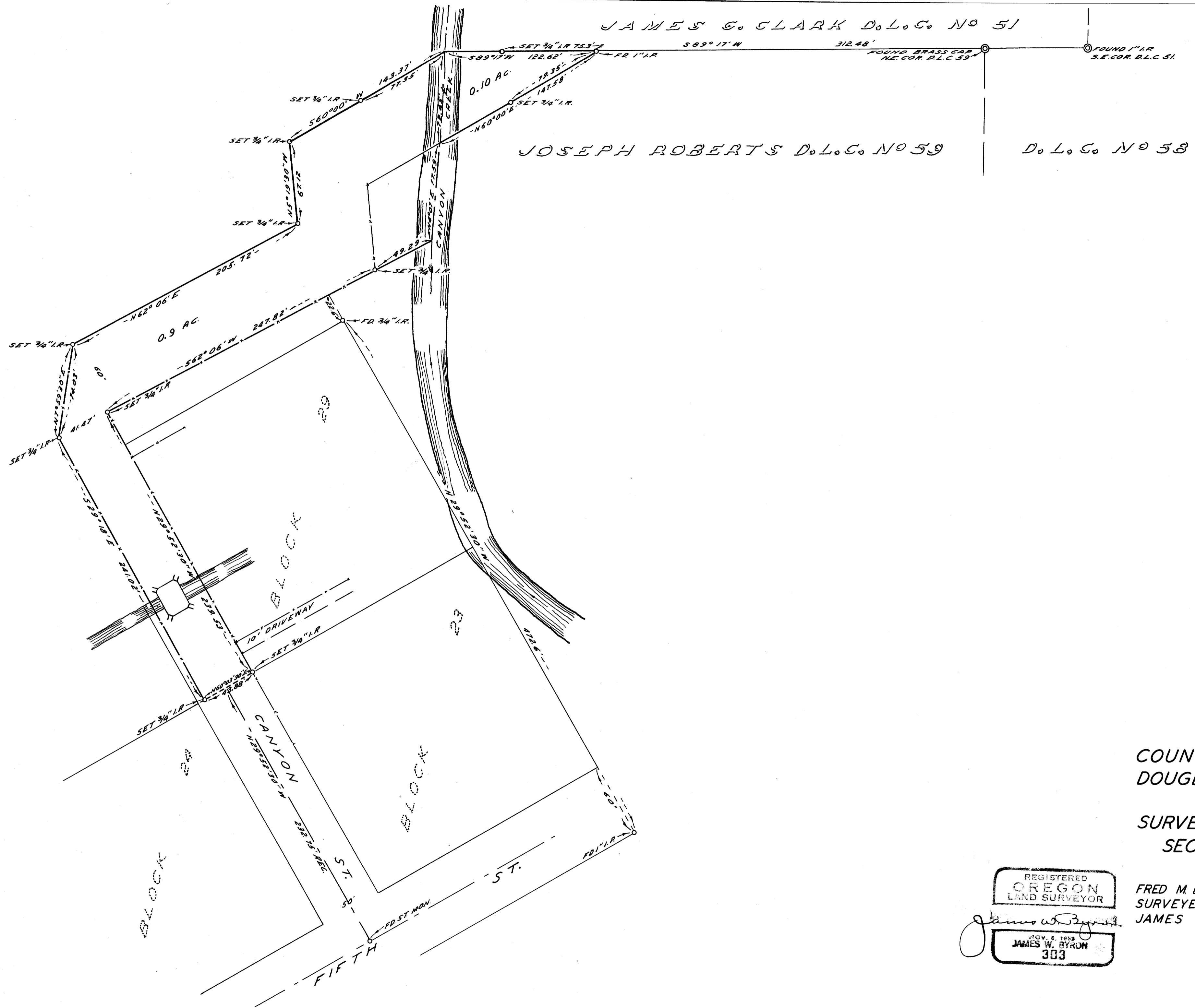


M2-18



COUNTY SURVEYOR'S OFFICE
DOUGLAS COUNTY, OREGON

SURVEY FOR DEED DESCRIPTION
SECTION 27, T30S., R5W., W.M.

REGISTERED
OREGON
LAND SURVEYOR
James W. Byron
NOV. 6, 1899
JAMES W. BYRON
303

FRED M. DARBY COUNTY SURVEYOR
SURVEYED JAN. 26, 1956 BY
JAMES W. BYRON - DEPUTY SCALE 1" = 50'
SURVEYED FOR O. J. MONGER, SUPT.
CANYONVILLE SCHOOL

COUNTY SURVEYORS FILE DATA
DO NOT REMOVE FROM OFFICE