

71-2 W  
67-H

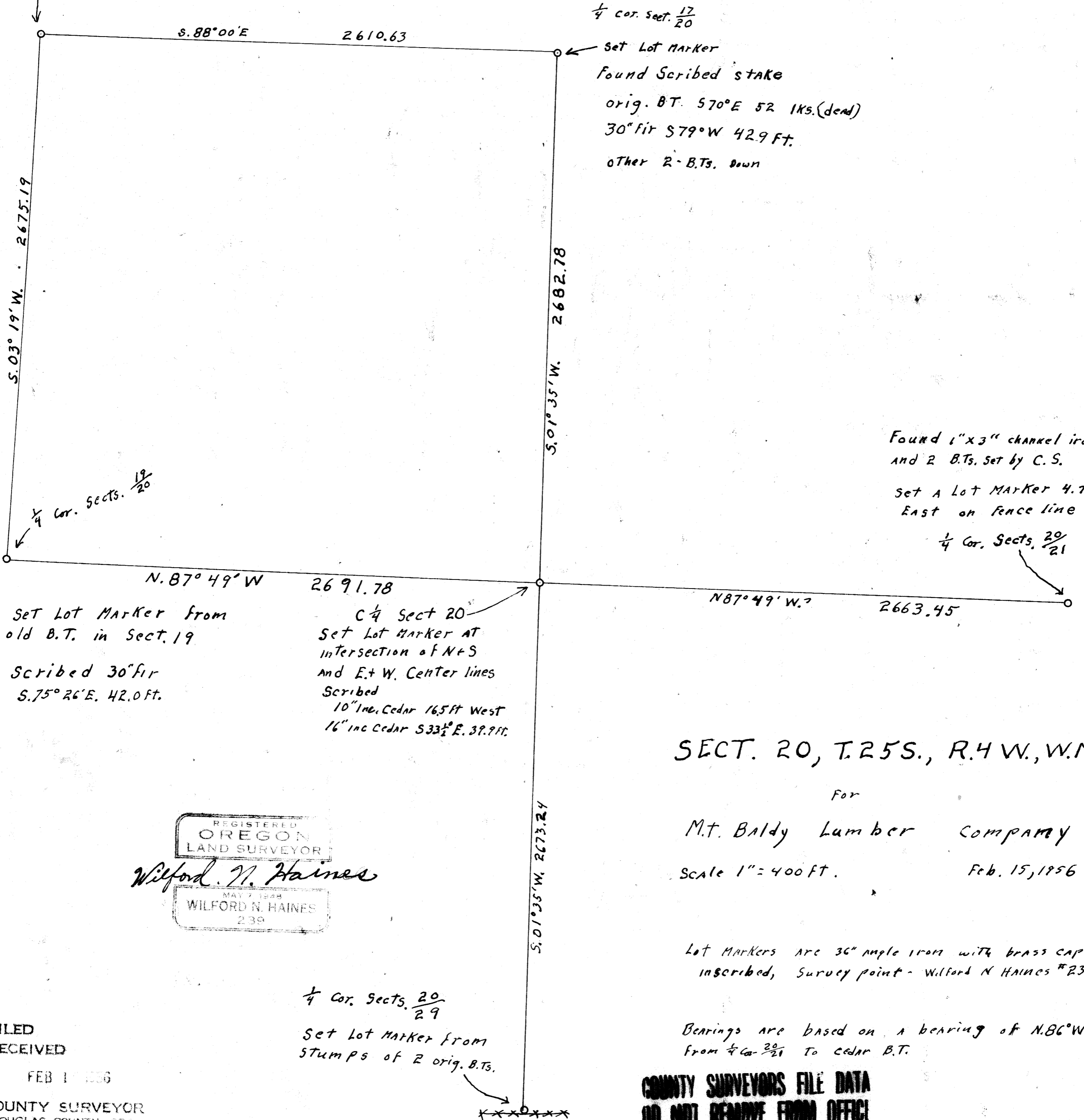
Cor. 17.18.19-20

Set Lot Marker from 2 orig. B.Ts.

Fir S.40° E. 64-1Ks

Fir S.57° W. 62-1Ks

80" Fir down



1/4 cor. sect. 17/20

Set Lot Marker

Found Scribed stake

orig. B.T. S70°E 52 1Ks. (dead)

30" fir S79°W 42.9 Ft.

Other 2-B.Ts. down

Found 1"x3" channel iron  
and 2 B.Ts. set by C.S.

Set A Lot Marker 4.73 Ft.  
East on fence line

1/4 Cor. Sects. 20/21

1/4 Cor. Sects. 19/20

Set Lot Marker from  
old B.T. in Sect. 19

Scribed 30" fir  
S.75°26'E. 42.0 ft.

C 1/4 Sect 20  
Set Lot Marker AT  
intersection of N+S  
and E+W. Center lines  
Scribed  
10" inc. Cedar 16.5 ft West  
16" inc Cedar S33 1/2° E. 39.9 ft.

SECT. 20, T.25S., R.4W., W.M.

For

M.T. Baldy Lumber Company

Scale 1" = 400 ft.

Feb. 15, 1956

Lot Markers are 30" angle iron with brass caps  
inscribed, Survey point - Wilford N HAINES #239.

Bearings are based on a bearing of N.86°W.  
from 1/4 Cor. 20/21 to cedar B.T.

COUNTY SURVEYORS FILE DATA  
DO NOT REMOVE FROM OFFICE

REGISTERED  
OREGON  
LAND SURVEYOR

Wilford N. Haines

MAY 7 1948  
WILFORD N. HAINES  
239

1/4 Cor. Sects. 20/29

Set Lot Marker from  
Stumps of 2 orig. B.Ts.

FILED  
RECEIVED

FEB 1 1956

COUNTY SURVEYOR  
DOUGLAS COUNTY, OR.

AWB

H-69  
M2-14