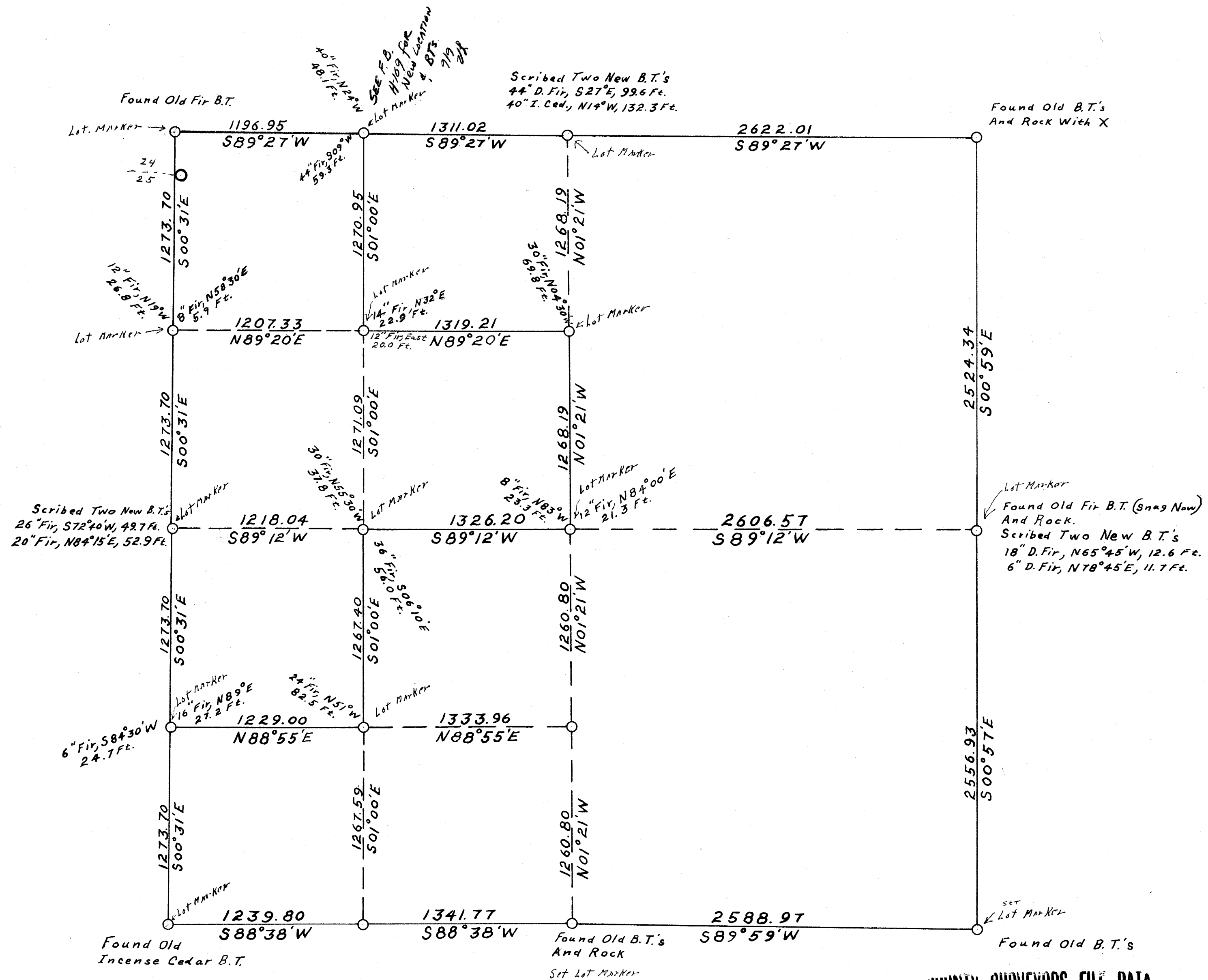


M2-13
 F.B. H-113
 F.B. H-105
 F.B. H-109
 F.B. H-125

SECT. 30, T22S., R.6 W. W. M.



**COUNTY SURVEYORS FILE DATA
 DO NOT REMOVE FROM OFFICE**

Note
 Lot Markers are angle irons
 with a Brass cap inscribed.
 Survey Point - Wilford N. HAINES 239
 Bearings are based on Magnetic var.
 21°15'E at N.E. Cor.

This survey made for E.G. Whipple Mill To establish
 line & corners. The North & corner + the west & corner were set by
 proportionate measurement all other original corner were found.

Surveyed 1955 Map made Jan. 1956 Scale 1" = 500'

REGISTERED
 OREGON
 LAND SURVEYOR
 Wilford N. Haines
 MAY 7, 1948
 WILFORD N. HAINES
 239

FILED
 RECEIVED
 FEB 20 1956
 COUNTY SURVEYOR
 DOUGLAS COUNTY, OR.
 F.B. H-125
 F.B. H-109
 F.B. H-105
 F.B. H-113
 M2-13