

COUNTY SURVEYORS FILE DATA
DO NOT REMOVE FROM OFFICE

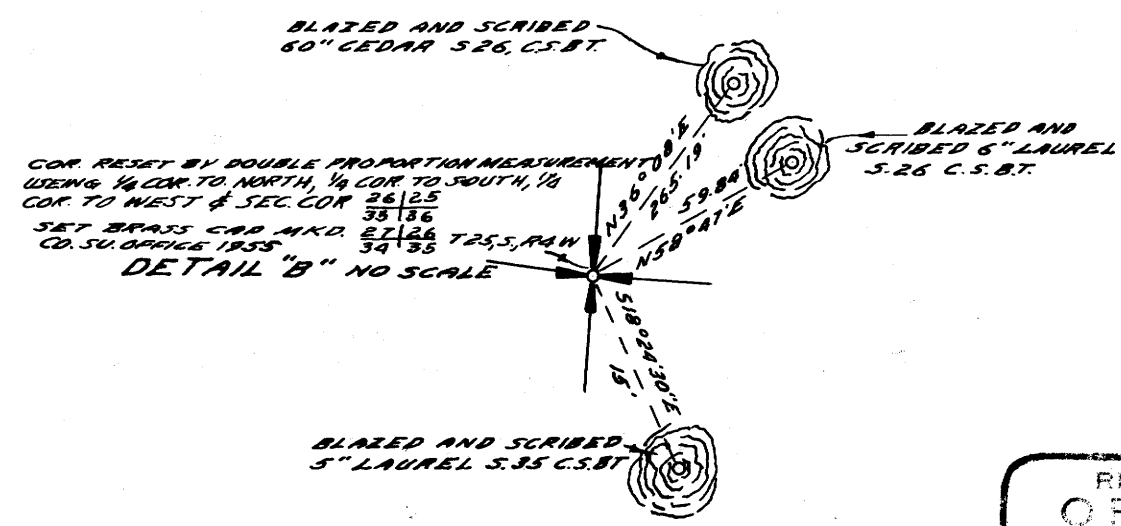
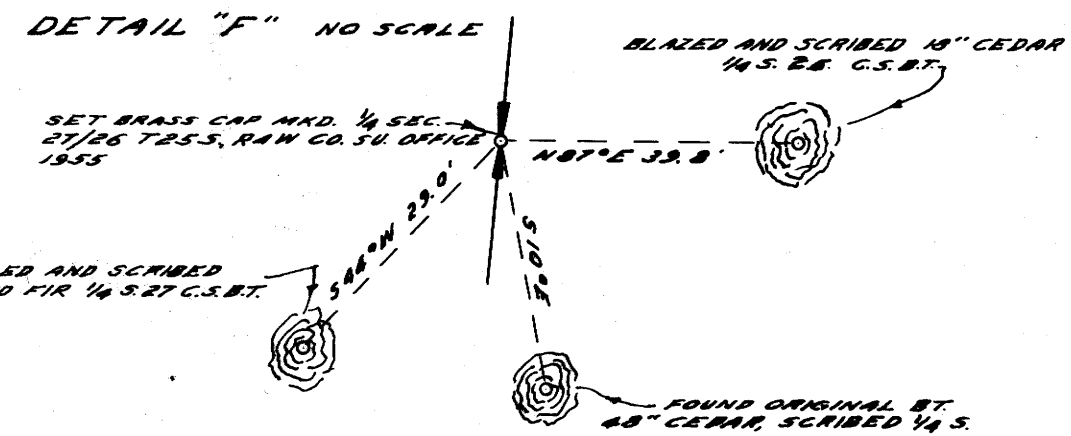
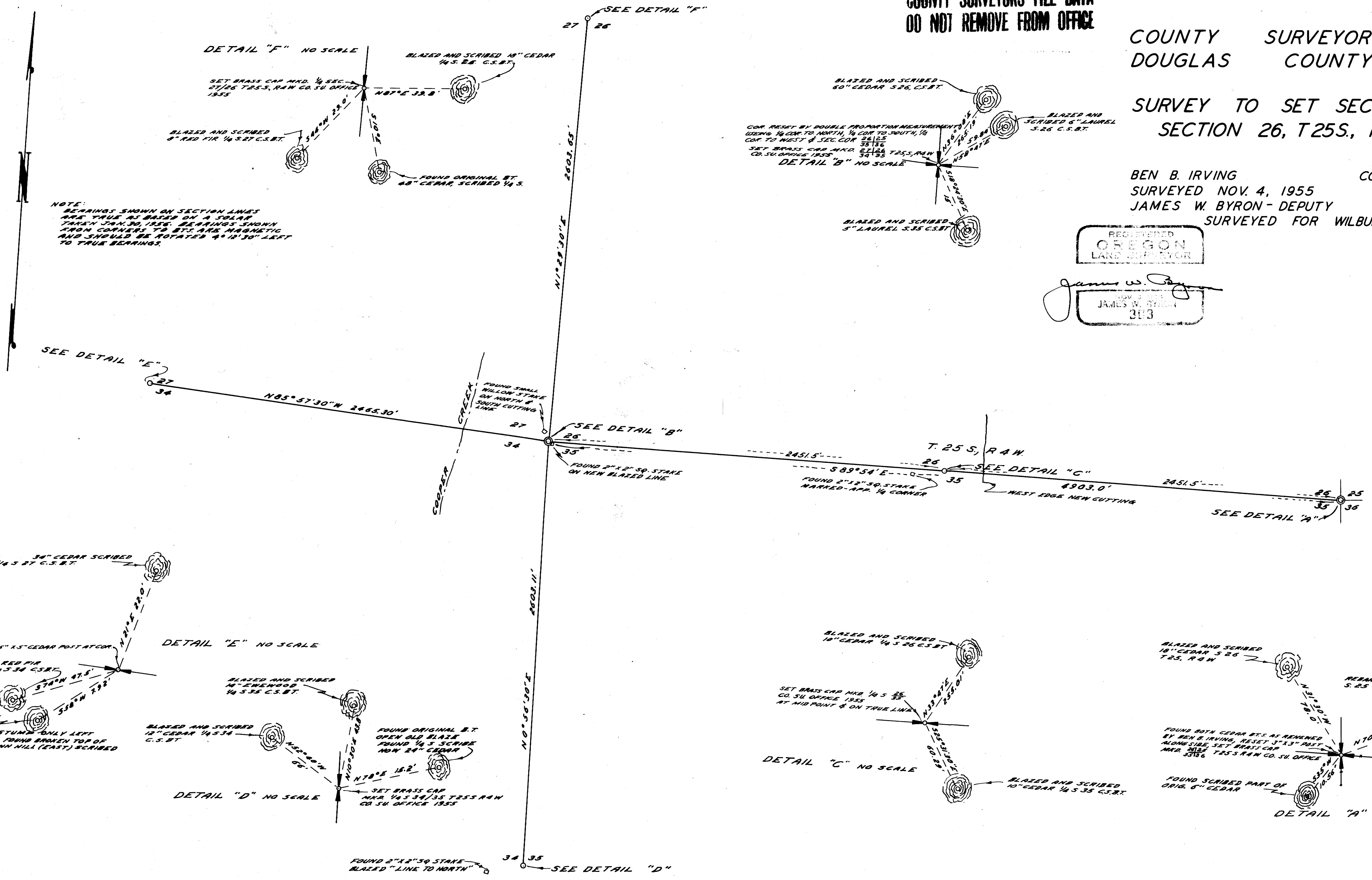
COUNTY SURVEYOR'S OFFICE
DOUGLAS COUNTY, OREGON

SURVEY TO SET SEC. CORNERS
SECTION 26, T25S., R4W., W.M.

BEN B. IRVING COUNTY SURVEYOR
SURVEYED NOV. 4, 1955 BY
JAMES W. BYRON - DEPUTY SCALE 1" = 400'
SURVEYED FOR WILBUR LUMBER CO.



James W. Byron
NOV 10 1955
JAMES W. BYRON
303



NOTE: BEARINGS SHOWN ON SECTION LINES ARE TRUE AS BASED ON A SOLAR TRIANGULATION, 1955. BEARINGS SHOWN FROM CORNERS TO B.T.'S ARE MAGNETIC AND SHOULD BE ROTATED 4° 12' 30\"/>

SEE DETAIL 'E'

SEE DETAIL 'B'

SEE DETAIL 'C'

SEE DETAIL 'A'

DETAIL 'E' NO SCALE

DETAIL 'D' NO SCALE

DETAIL 'C' NO SCALE

DETAIL 'A' NO SCALE