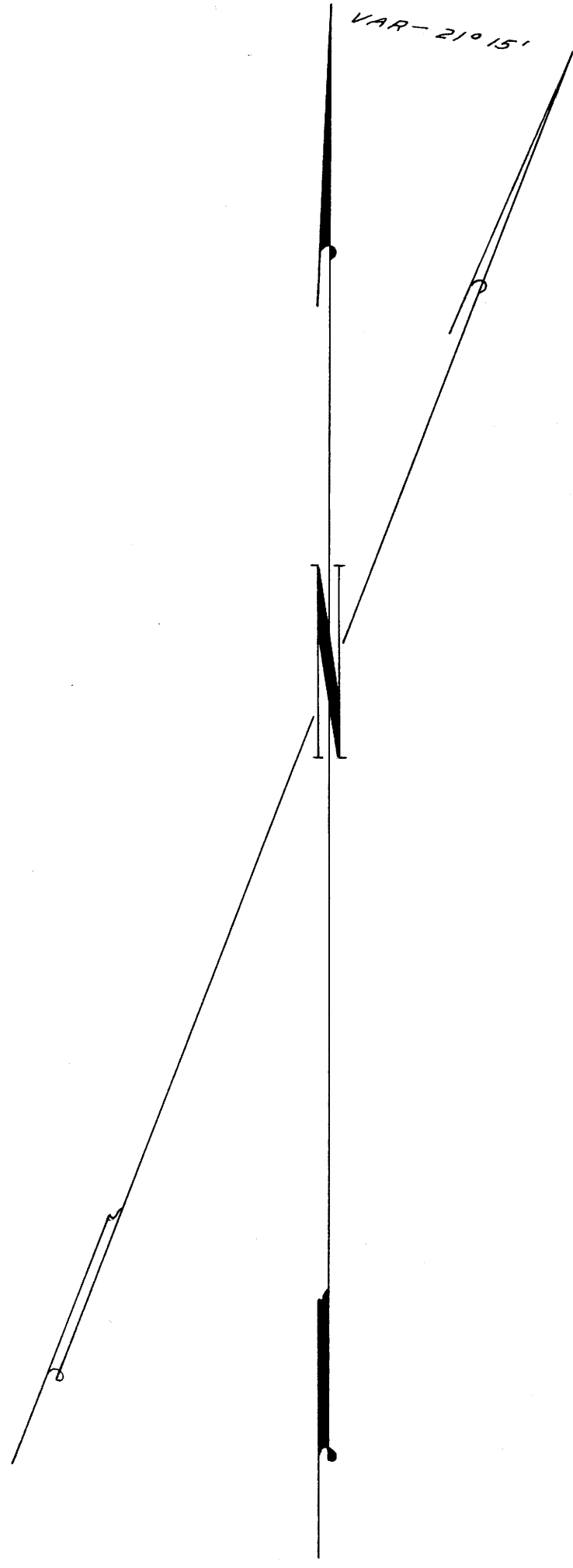


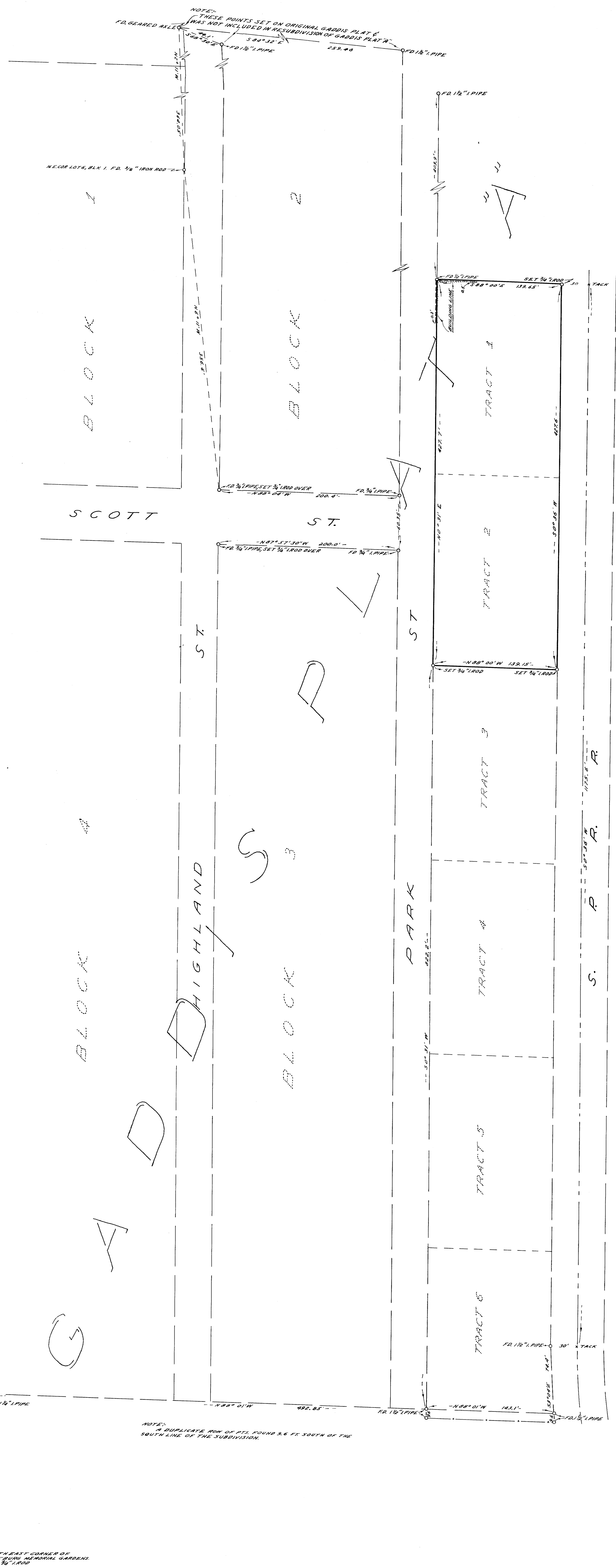
COUNTY SURVEYORS FILE DATA
DO NOT REMOVE FROM OFFICE

C.S. FILE 40199
MAP FILE M1/B



NOTE: BASE OF BEARINGS NOT SET ALONG
EAST LINE OF PARK ST. AS PER OFFICIAL PLAT
OF RESUBDIVISION GADDIS PLAT "A"

NOTE: THESE POINTS SET ON ORIGINAL GADDIS PLAT "A"
WAS NOT INCLUDED IN RESUBDIVISION OF GADDIS PLAT "A"



COUNTY SURVEYOR'S OFFICE
DOUGLAS COUNTY, OREGON

SURVEY TO SET PROPERTY CORNERS
TRACTS 1 & 2 RESUBDIVISION OF -
GADDIS PLAT "A"

FRED M. DARBY COUNTY SURVEYOR
SURVEYED MAR. 20, 1956 BY
JAMES W. BYRON - DEPUTY SCALE 1" = 50'
SURVEYED FOR HUDSON HOUSE INC.
B. H. CAMPBELL

REGISTERED
OREGON
LAND SURVEYOR

JAMES W. BYRON
303

1/4" PIPE

NOTE: IN DUPLICATE ROW OF PLS FOUND 8.6 FE SOUTH OF THE
SOUTH LINE OF THE SUBDIVISION.

SOUTHWEST CORNER OF
HUDSON HOUSE GARDENS
1/4" PIPE

COUNTY SURVEYORS FILE DATA
DO NOT REMOVE FROM OFFICE

C.S. FILE 40199
M1-B