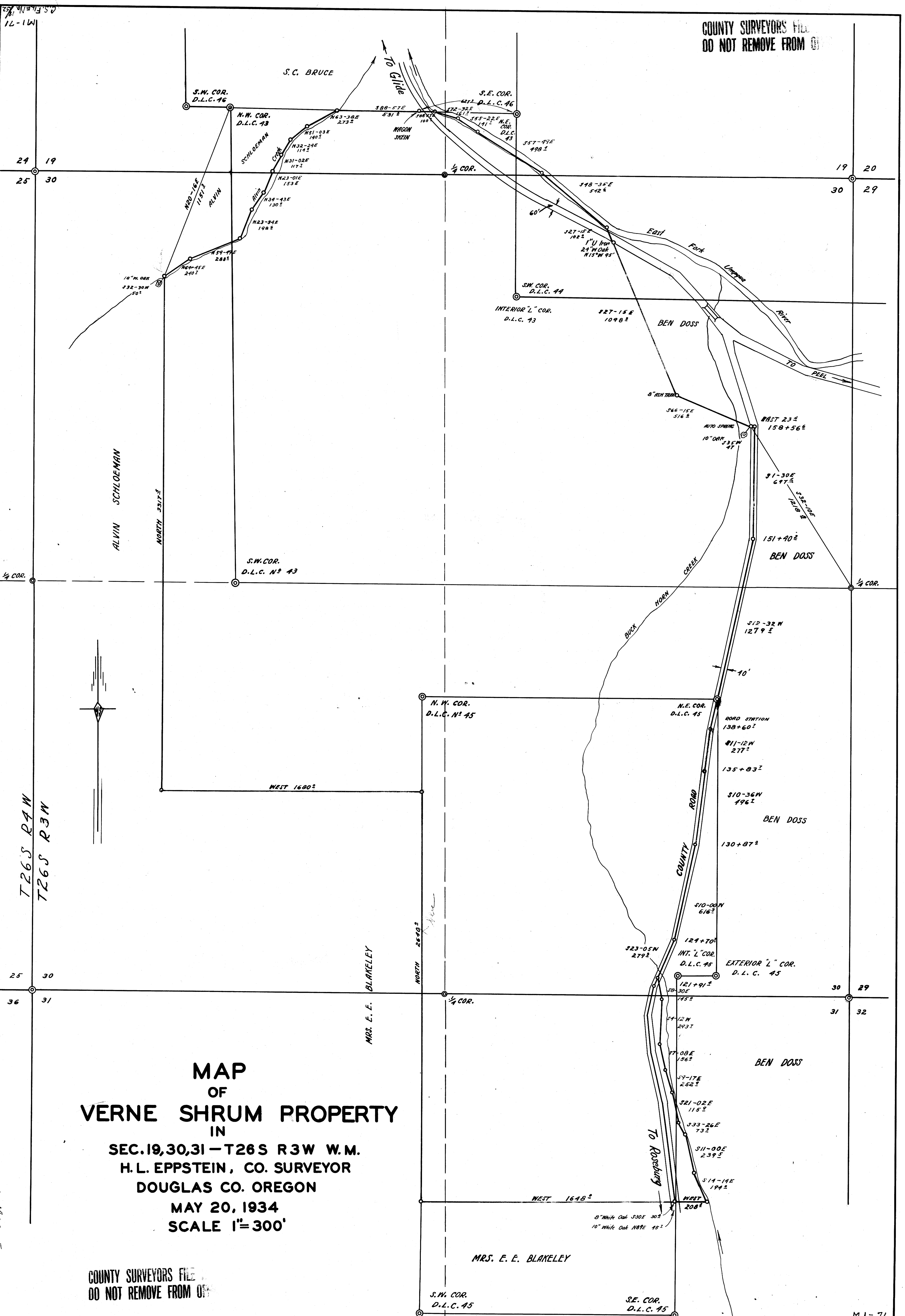


COUNTY SURVEYORS FILE
DO NOT REMOVE FROM OFFICE



**MAP
OF
VERNE SHRUM PROPERTY
IN
SEC. 19, 30, 31 - T26S R3W W.M.
H. L. EPPSTEIN, CO. SURVEYOR
DOUGLAS CO. OREGON
MAY 20, 1934
SCALE 1" = 300'**

COUNTY SURVEYORS FILE
DO NOT REMOVE FROM OFFICE

MRS. E. E. BLAKELEY
S.W. COR. D.L.C. 45
S.E. COR. D.L.C. 45

BEN DOSS

BEN DOSS

BEN DOSS

T26S R3W
T26S R3M

MAP FILE M1-71

M1-71
C.S. File No. 19/52

Drawer 58