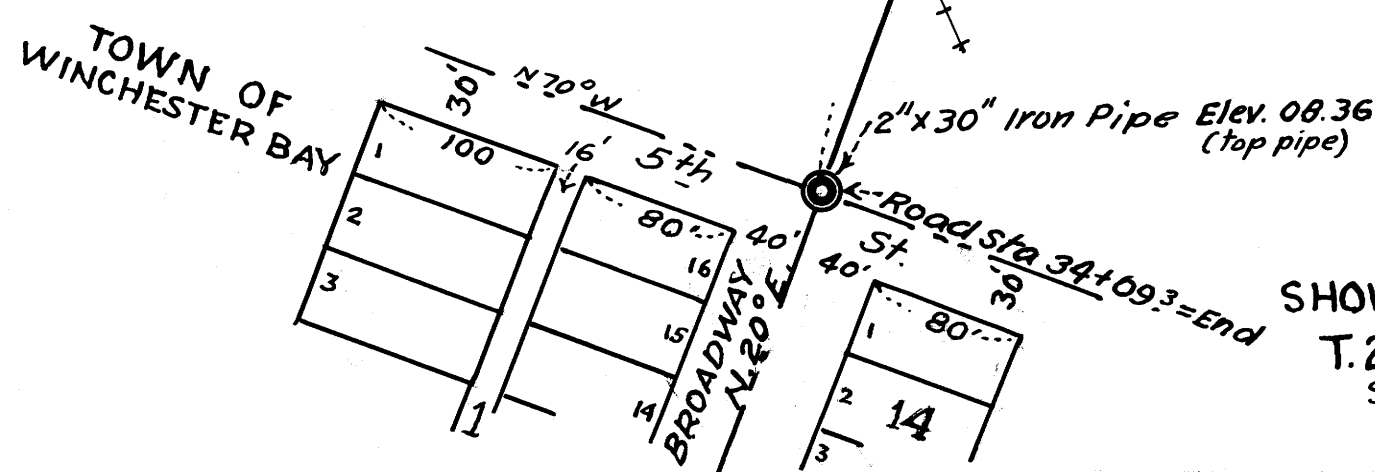


Datum for all Elevations from U.S. B.M. - S. End of Winchester Bay, Elev. 16.043

Survey and Map made by
Arthur Boyer
Deputy County Surveyor
Douglas County, Oregon.



U.S. COAST GUARD
STATION SITE AND ROAD
SHOWING PORTION SEC 7 & FRAC. S.W. 1/4 SEC. 6.
T. 22 S.; R. 12 W. W.M. DOUGLAS COUNTY, ORE.
SCALE, 1" = 100 FT. Nov. 1936.
Arthur Boyer Dep. Co. Surveyor, Reg. Engr. Ore. Lic. 1581

M 1-65