

T22S R7W W.M.

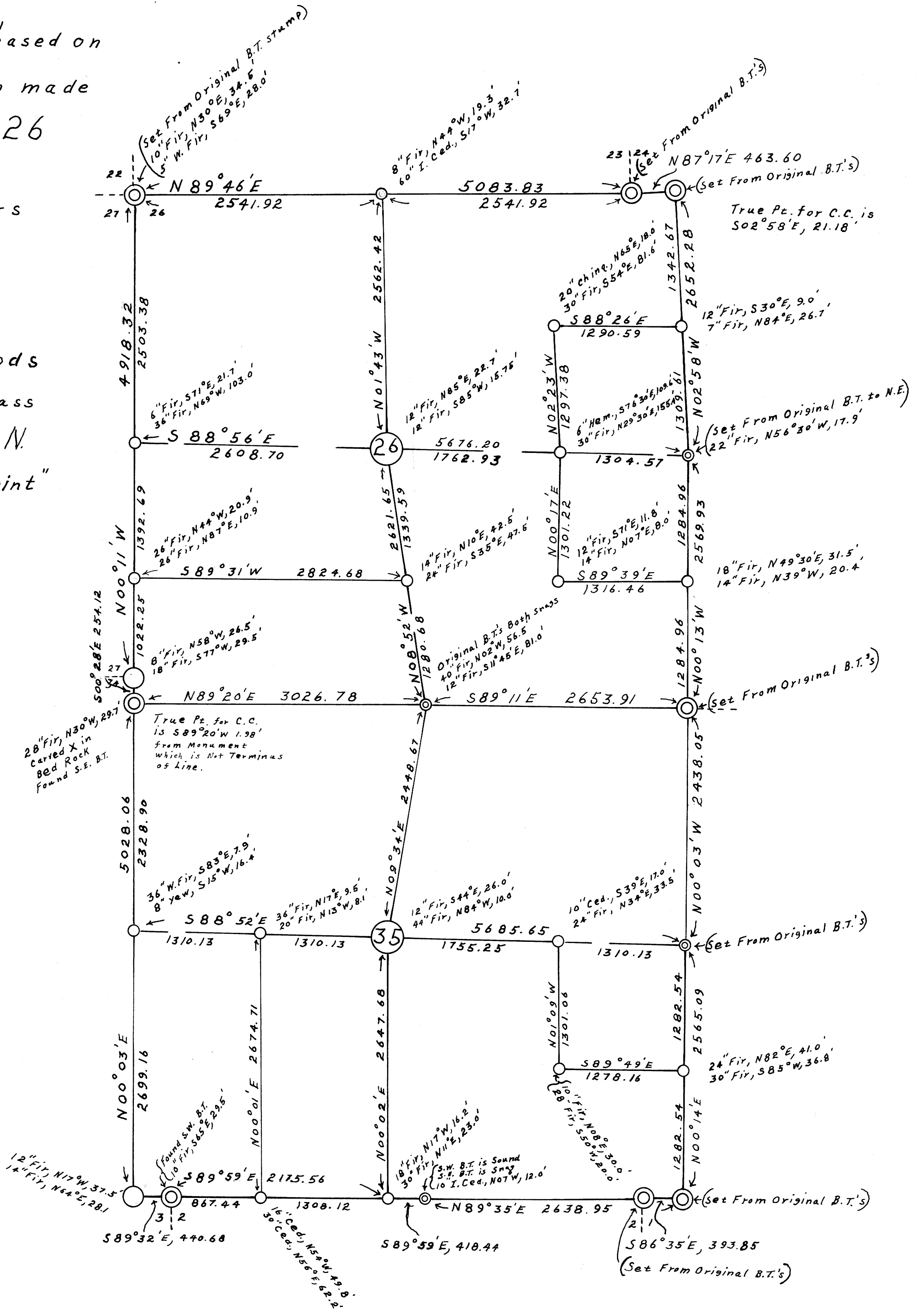
Survey of sections 26 + 35 for E. G. Whipple
by Wilford N. Haines #239 Drain, Oregon

Note: All bearings are true, based on
Polaris observation made
near N.W. Cor. of Sec. 26

⊙⊙ Denotes original corners

Scale: 1" = 800'

Set 1"x1"x36" ⊥ iron rods
at all corners, with brass
cap inscribed "Wilford N.
Haines #239 Survey Point"



FILED
RECEIVED

OCT 15 1957

COUNTY SURVEYOR
DOUGLAS COUNTY, ORE.

COUNTY SURVEYORS FILE BOOK
DO NOT REMOVE FROM OFFICE

MAP FILE 1 59

C.S. File No. 42/309

F.B. H-88

MAP FILE M 1 - 59
F.B. H-88, H-97