

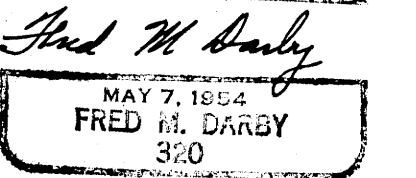
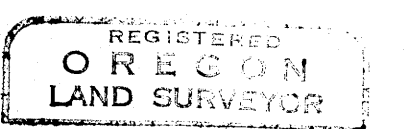
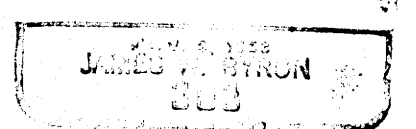
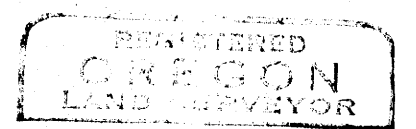
COUNTY SURVEYORS FILE DATA
DO NOT REMOVE FROM OFFICE

NOTE: BEARING SHOWN ARE TRUE,
BASED ON A SOLAR OBSERVATION
AS TAKEN ON THE SURVEY OF
"HIDDEN PARK" VOL. 9 AND REC. PAGE 60

COUNTY SURVEYOR'S OFFICE
DOUGLAS COUNTY, OREGON

SURVEY FOR DEED DESCRIPTION
SECTION 19 & 30 T27S., R 5 W., W. M.

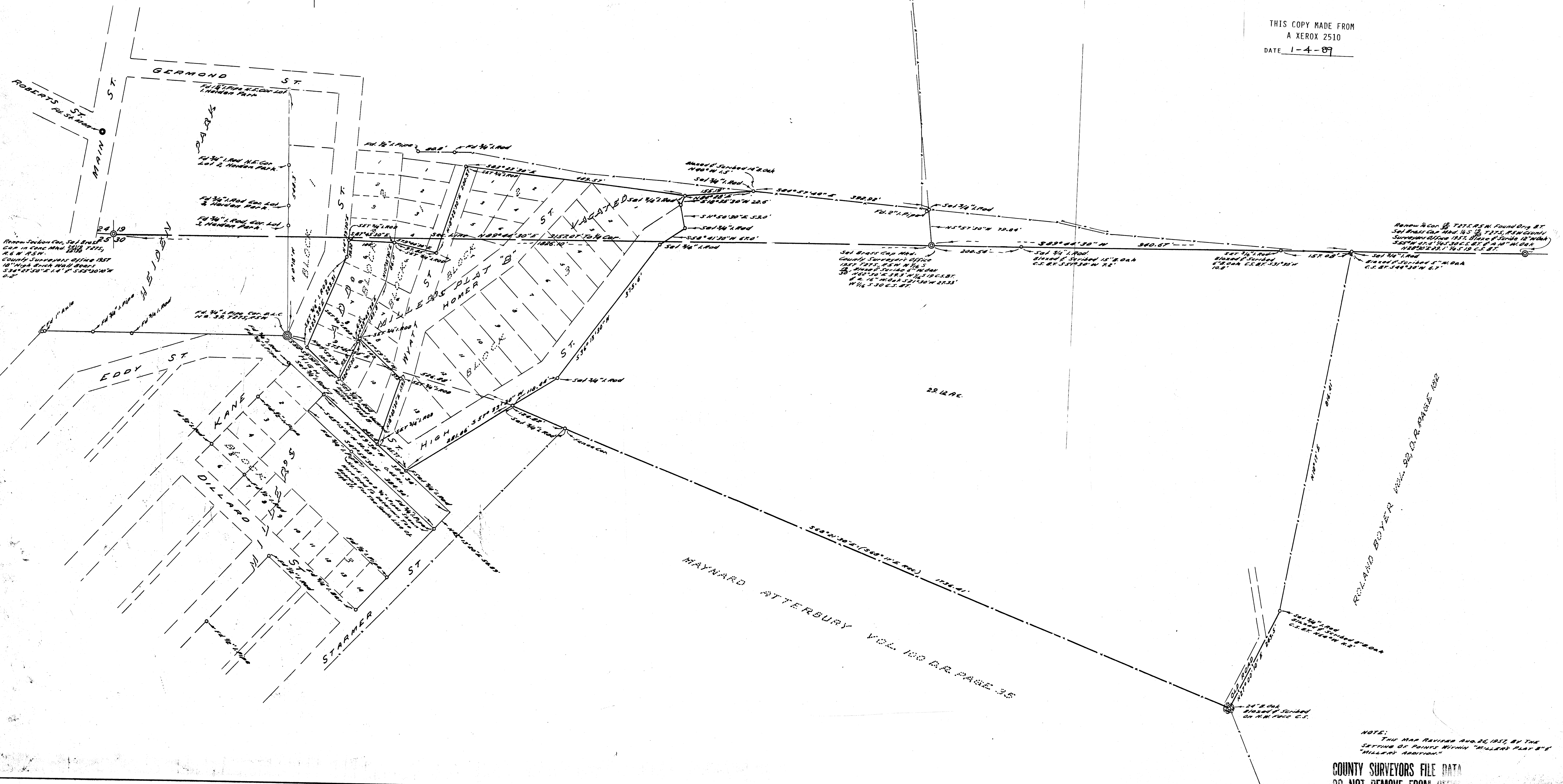
FRED M. DARBY COUNTY SURVEYOR
SURVEYED JUNE 13 - JULY 30, 1957 BY
JAMES W. BYRON - DEPUTY SCALE 1" = 100'
SURVEYED FOR BRADY MONTGOMERY



KINNEAR HEIGHTS TR. 34' 7" ROAD

TERRACE PARK ADD. 34' 7" ROAD

THIS COPY MADE FROM
A XEROX 2510
DATE 1-4-89



NOTE:
THIS MAP REVISED AND RE-SURVEYED BY THE
SETTING OF POINTS WITHIN "HIDDEN PARK" &
"MILLER ADDITION"
COUNTY SURVEYORS FILE DATA
DO NOT REMOVE FROM OFFICE