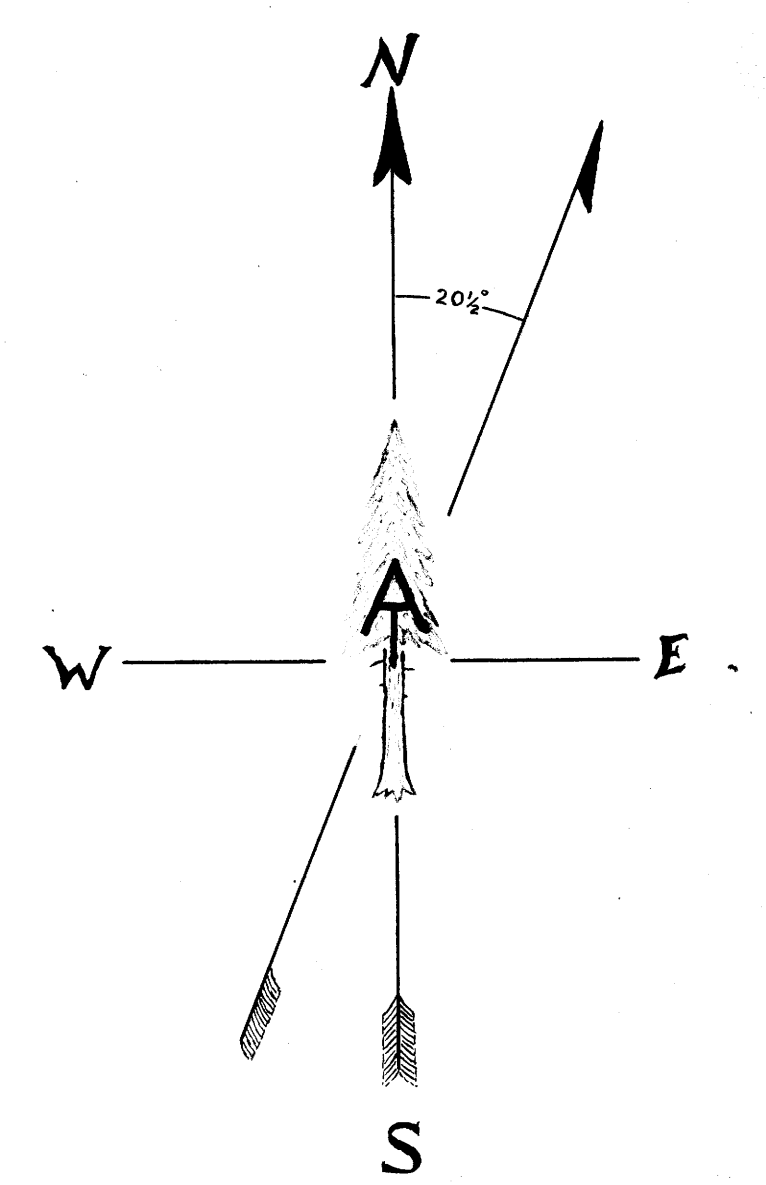
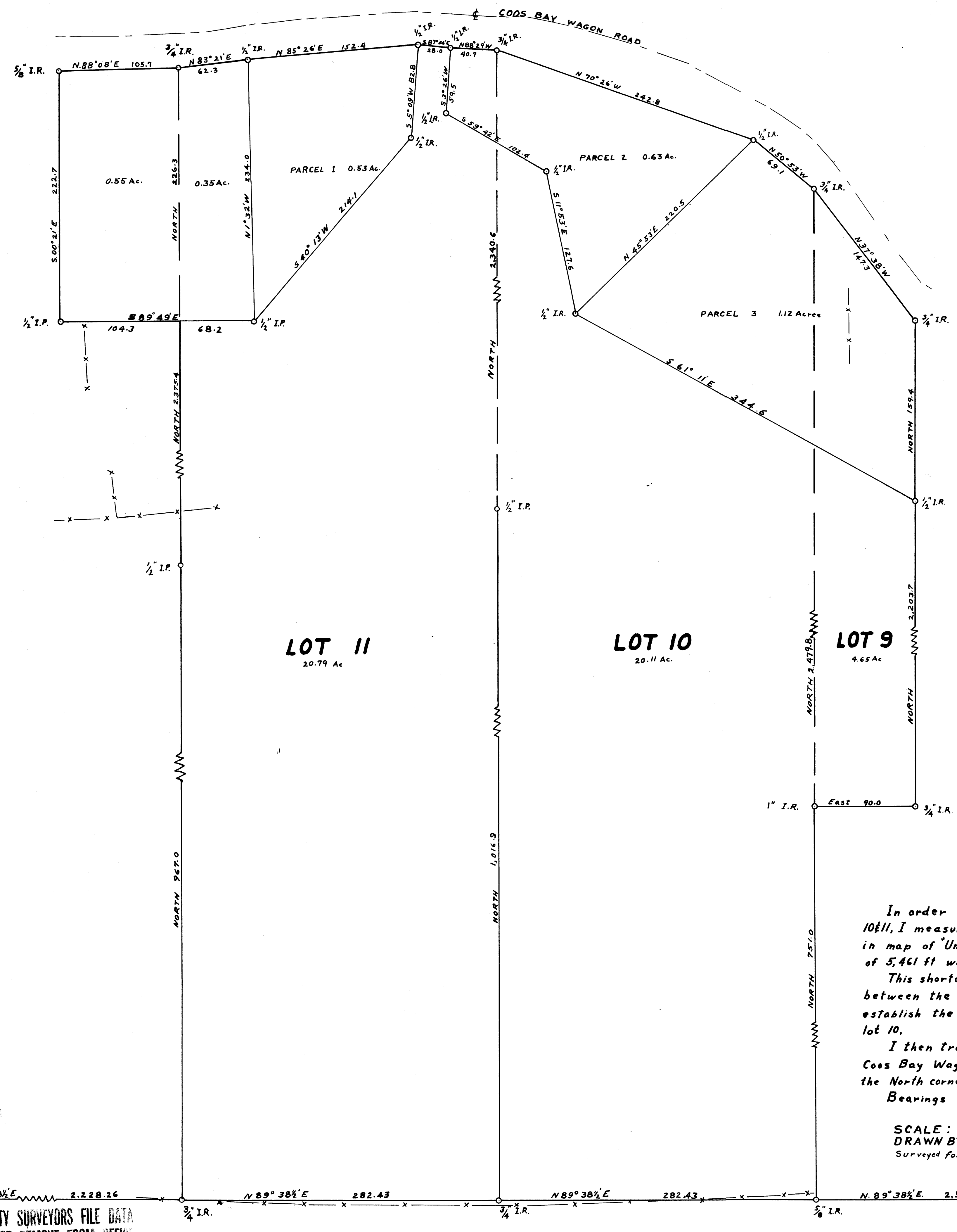


# SURVEY TO ESTABLISH CORNERS ON S. A. HUTCHINS PROPERTY

Lots 10, 11, & West 90ft. Lot 9, Block E, Umpqua Park, Sec. 23, Twp. 27S. R6 W. WM.



REGISTERED  
OREGON  
LAND SURVEYOR  
*A. R. Tuckey*  
MAY 4, 1953  
A. R. TUCKEY  
380

In order to establish the boundaries of Lots 10 & 11, I measure the south boundary thereof, as shown in map of "Umpqua Park". The recorded distance of 5,461 ft was found to be short by 142.6 feet.

This shortage I apportion throughout the Lots lying between the S.W. & S.E. corners of Section 23, and establish the S.W. cor. of lot 11, S.E. cor. lot 11 & S.E. cor. lot 10.

I then traverse North to the south boundary of Coos Bay Wagon Rd. Right-of-way and establish the North corners of Lots 10, 11, & West 90 feet of lot 9.

Bearings established by solar observations.

SCALE: 1 INCH = 50 FEET  
DRAWN BY: A. R. TUCKEY APRIL 17, 1957  
Surveyed for Selmar Hutchins by A.R. Tuckey

FILED  
RECEIVED  
APR 20 1957  
COUNTY SURVEYOR  
DOUGLAS COUNTY, ORE.

22 23  
27 26  
Section Corner

COUNTY SURVEYORS FILE DATA  
DO NOT REMOVE FROM OFFICE

23 24  
24 25  
Section Corner