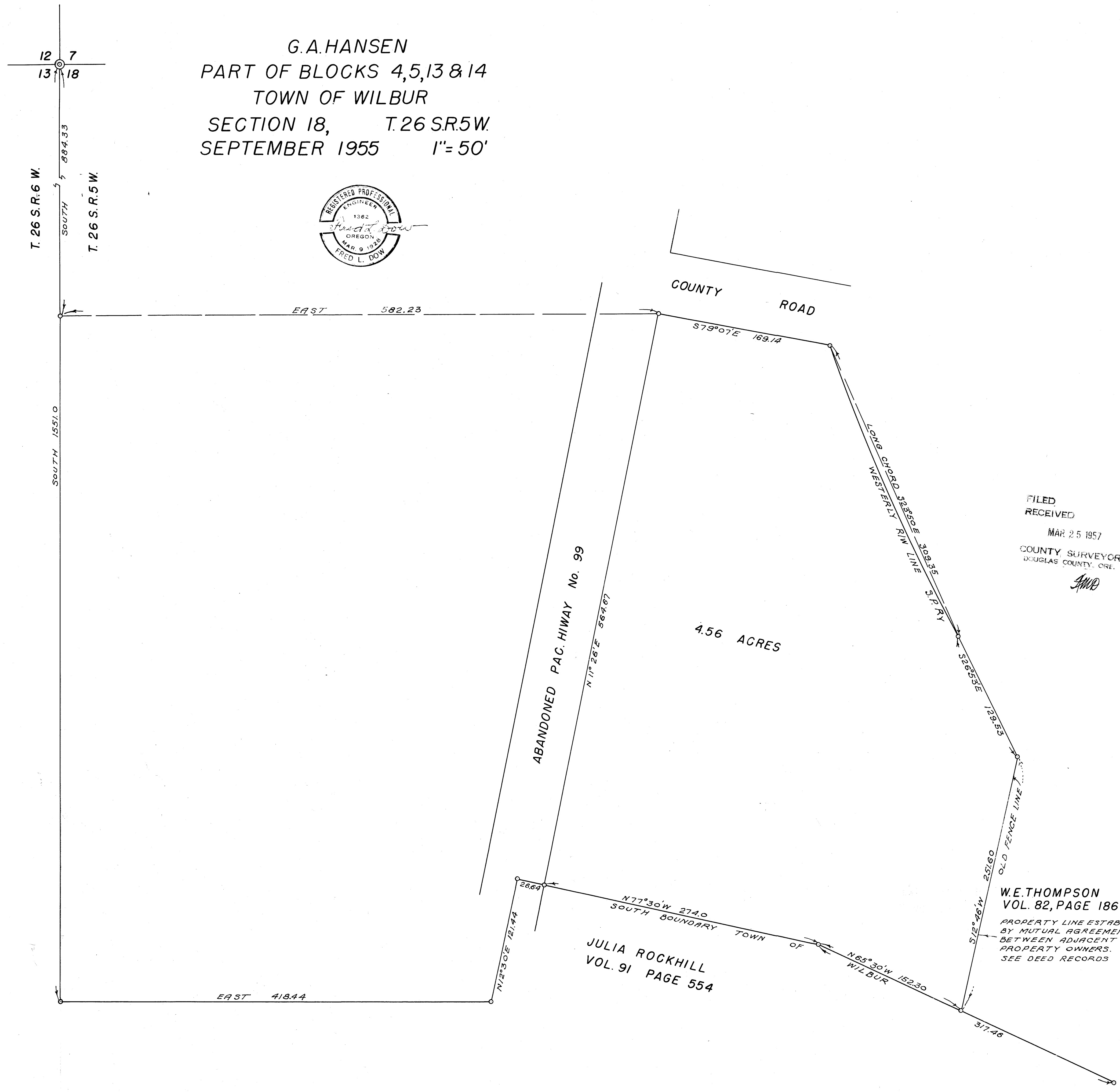


COUNTY SURVEYORS FILE DATA  
DO NOT REMOVE FROM OFFICE

MAP FILE M.L. 152

G.A. HANSEN  
PART OF BLOCKS 4, 5, 13 & 14  
TOWN OF WILBUR  
SECTION 18, T. 26 S. R. 5 W.  
SEPTEMBER 1955 1" = 50'



FILED  
RECEIVED  
MAR 25 1957  
COUNTY SURVEYOR  
DOUGLAS COUNTY, ORE.  
AND

W.E. THOMPSON  
VOL. 82, PAGE 186  
PROPERTY LINE ESTABLISHED  
BY MUTUAL AGREEMENT  
BETWEEN ADJACENT  
PROPERTY OWNERS.  
SEE DEED RECORDS

COUNTY SURVEYORS FILE DATA  
DO NOT REMOVE FROM OFFICE

MAP FILE M.L. 152