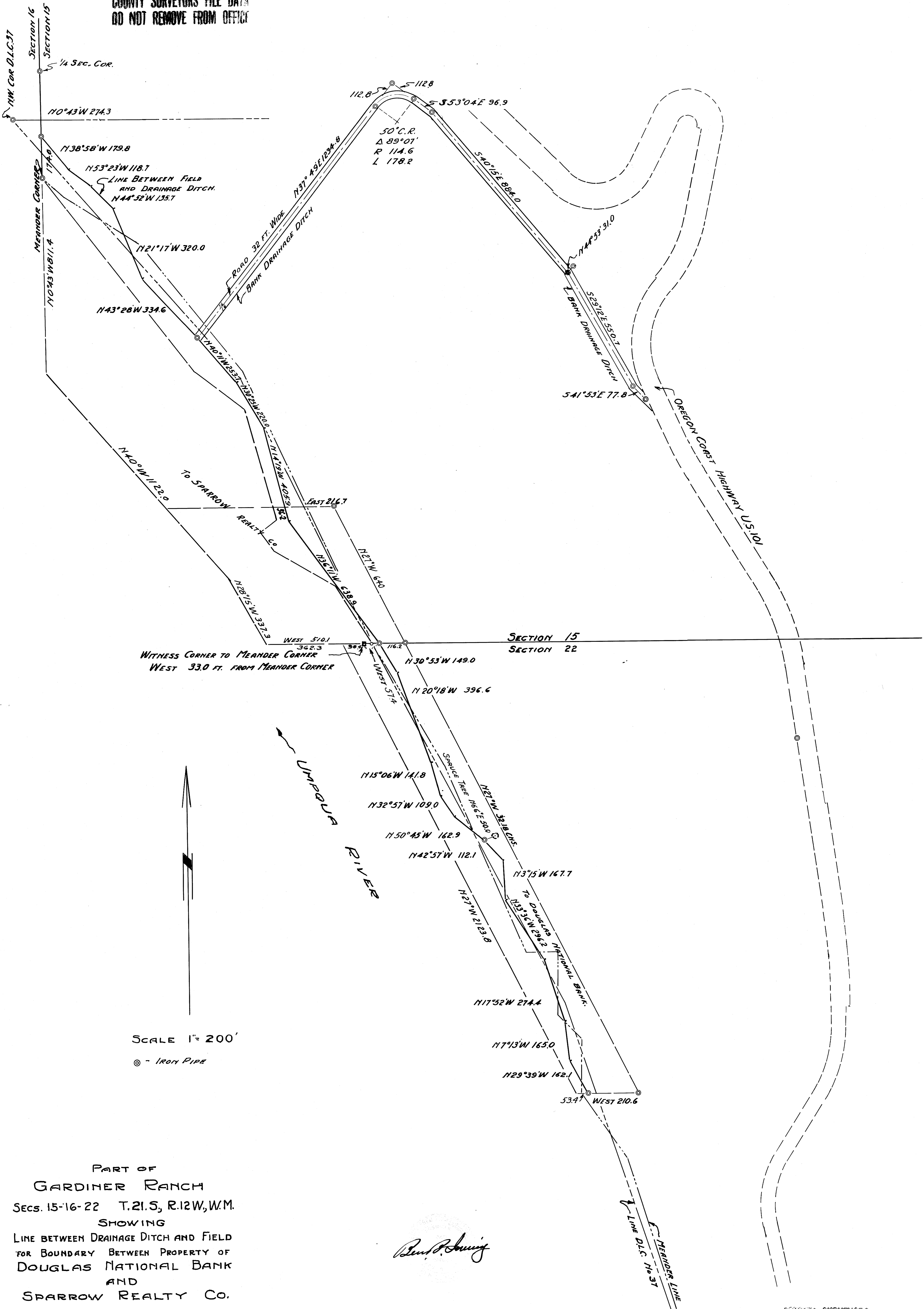


COUNTY SURVEYORS FILE DATA  
DO NOT REMOVE FROM OFFICE

MAP FILE M.I. 1-5



SECTION 15  
SECTION 22

WITNESS CORNER TO MEANDER CORNER  
WEST 33.0 FT. FROM MEANDER CORNER

SCALE 1"=200'

⊙ - Iron Pipe

PART OF  
GARDINER RANCH  
SECS. 15-16-22 T.21.S, R.12W, W.M.  
SHOWING  
LINE BETWEEN DRAINAGE DITCH AND FIELD  
FOR BOUNDARY BETWEEN PROPERTY OF  
DOUGLAS NATIONAL BANK  
AND  
SPARROW REALTY CO.

*Ben B. Irving*

BEN. B. IRVING  
CIVIL ENGINEER & SURVEYOR  
ROSEBURG OREGON  
OCTOBER 1940

COUNTY SURVEYORS FILE DATA  
DO NOT REMOVE FROM OFFICE

MAP FILE No. M.I. 1-5