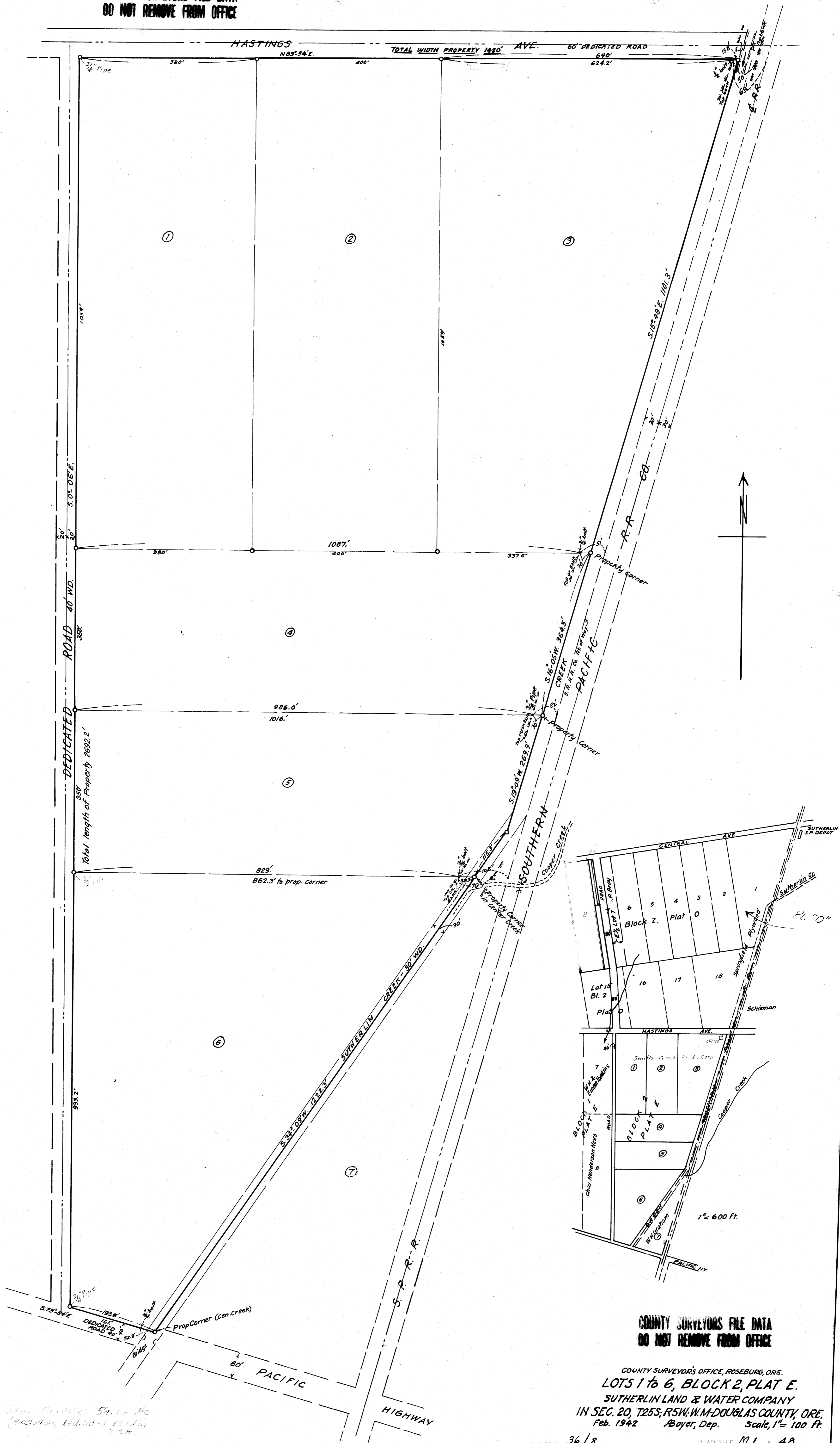


COUNTY SURVEYORS FILE DATA  
DO NOT REMOVE FROM OFFICE

M. 1-48



Total Area 59.14 Ac.  
(excluding railroad 13.17 Ac.)

COUNTY SURVEYORS FILE DATA  
DO NOT REMOVE FROM OFFICE

COUNTY SURVEYORS OFFICE, ROSEBURG, ORE.  
LOTS 1 to 6, BLOCK 2, PLAT E.  
SUTHERLIN LAND & WATER COMPANY  
IN SEC. 20, T25S, R5W, W.M. DOUGLAS COUNTY, ORE.  
Feb. 1942 Boyer, Dep. Scale, 1" = 100 Ft.

36/8

MAP FILE M. 1-48

MAP FILE M. 1-48

South Wood, P. M. R. - M. E. J. Loney