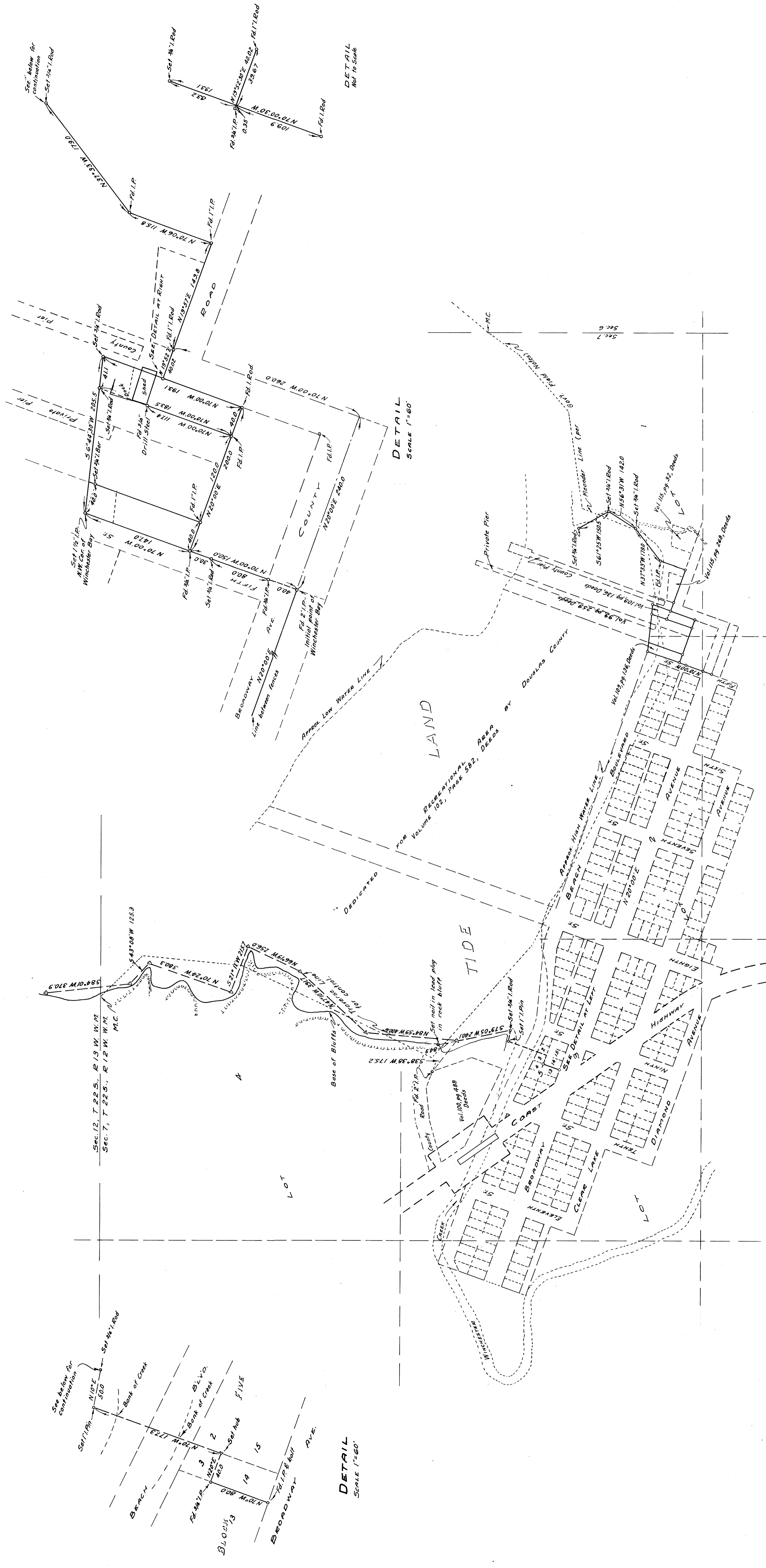


COUNTY SURVEYORS FILE DATA
DO NOT REMOVE FROM OFFICE

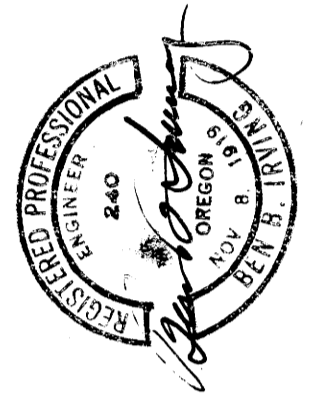
MAP FILE M 1 - 46

MAP FILE M. 1. 46



COUNTY SURVEYOR'S OFFICE
DOUGLAS COUNTY, OREGON.
WINCHESTER BAY AND VICINITY
RECREATIONAL SHOWING AREA LIMITS

SURVEYED APRIL 3, 4, 7, 1950
BY BEN. B. IRVING COUNTY SURVEYOR
SCALE 1" = 200'



COUNTY SURVEYORS FILE DATA
DO NOT REMOVE FROM OFFICE

MAP FILE M. 1. 46

C.S. File No. 4412
MAP FILE M. 1 - 46