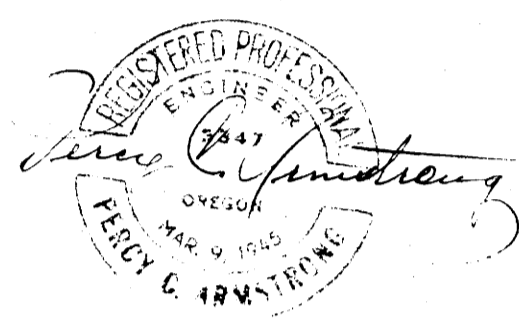


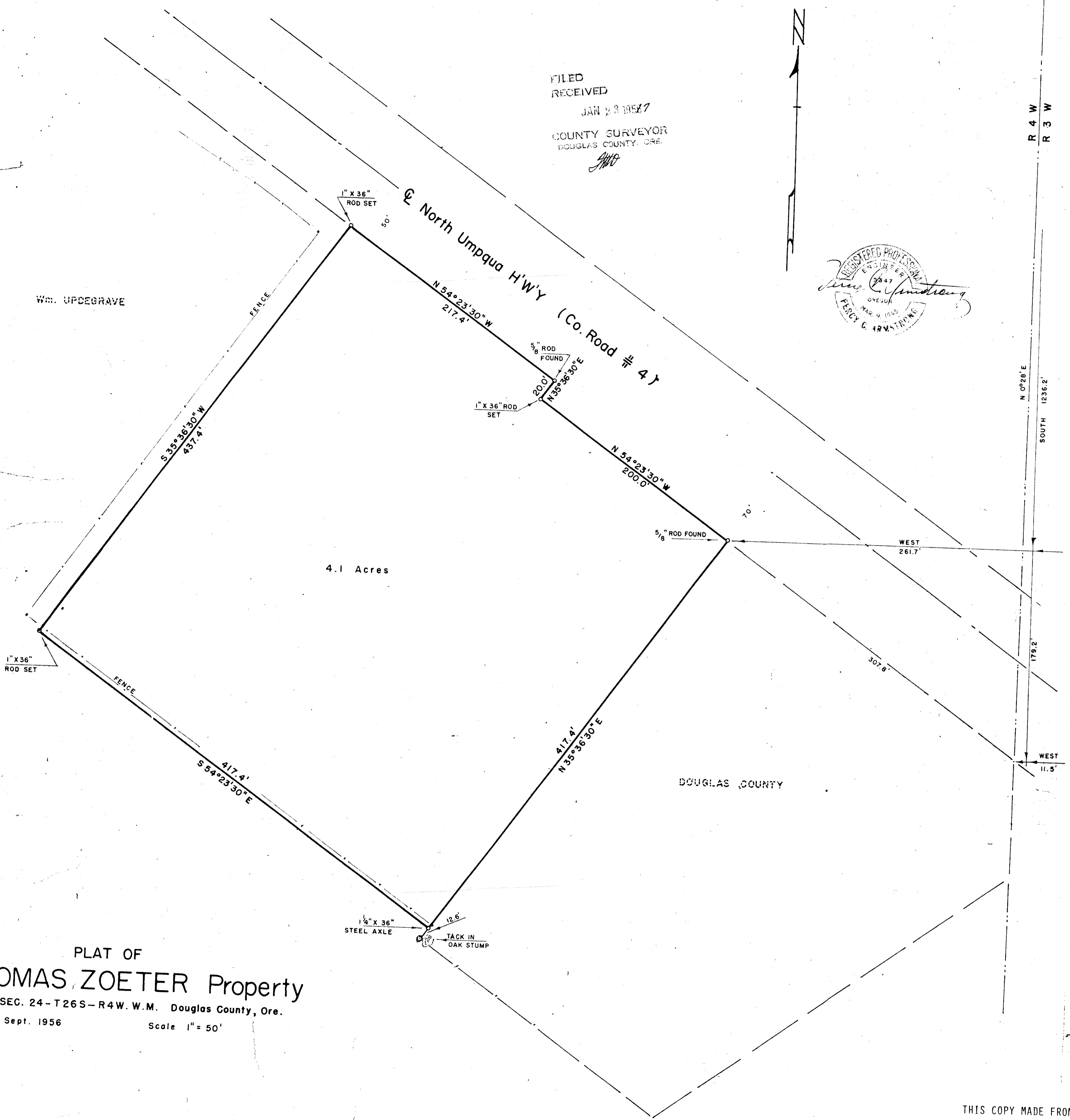
C.S. File No. 42/216  
MAD FILE M 1-43

N.E. Corner  
SECTION 24

FILED  
RECEIVED  
JAN 23 1957  
COUNTY SURVEYOR  
DOUGLAS COUNTY, ORE.  
*[Signature]*



Wm. UPDEGRAVE



4.1 Acres

DOUGLAS COUNTY

PLAT OF  
THOMAS ZOETER Property  
IN SEC. 24 - T 26 S - R 4 W. W.M. Douglas County, Ore.  
Sept. 1956 Scale 1" = 50'

THIS COPY MADE FROM  
A XEROX 2510  
DATE 1-4-88