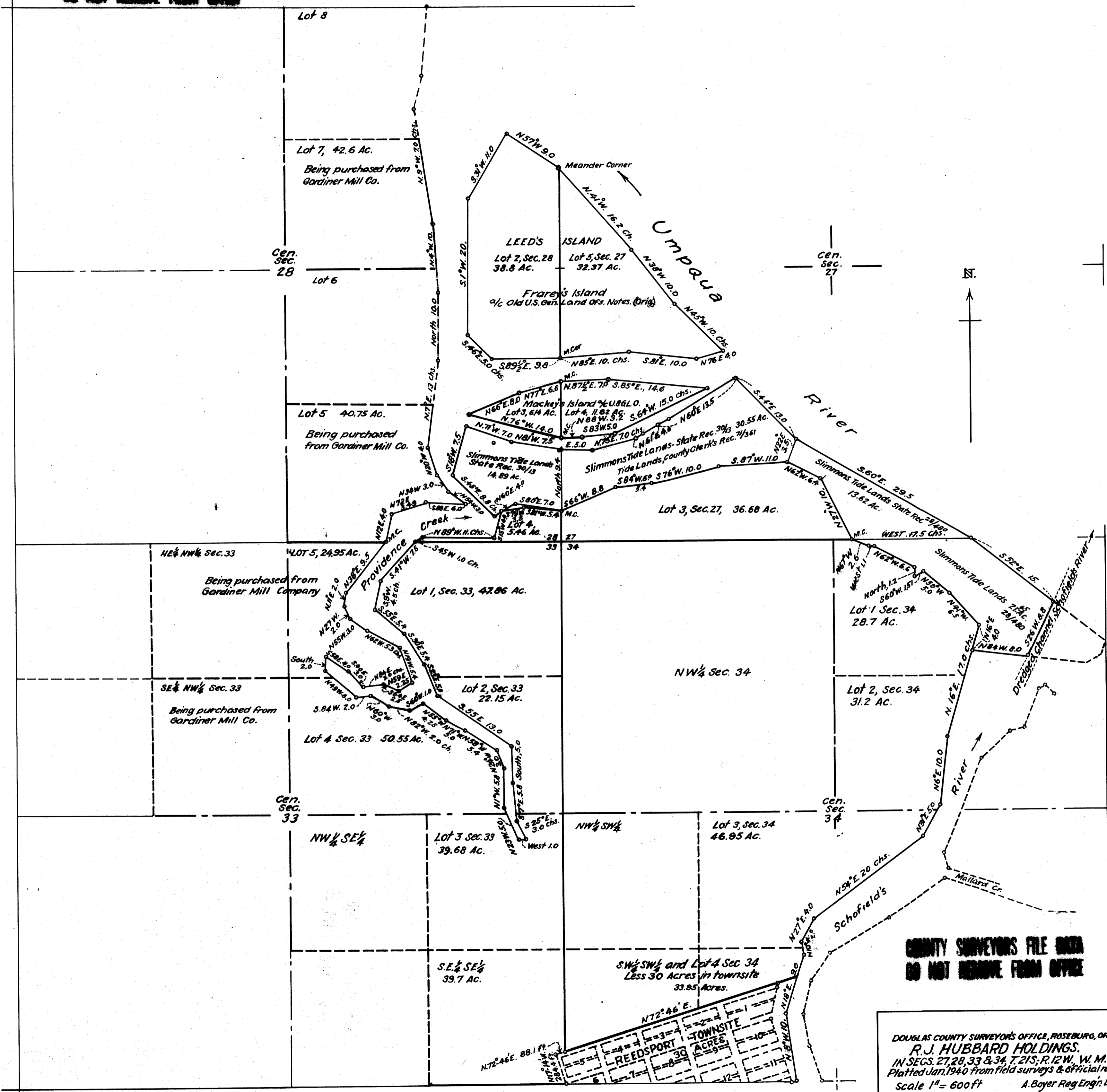


COUNTY SURVEYORS FILE DATA
DO NOT REMOVE FROM OFFICE



COUNTY SURVEYORS FILE DATA
DO NOT REMOVE FROM OFFICE

DOUGLAS COUNTY SURVEYORS OFFICE, ROSEBURG, ORE.
R.J. HUBBARD HOLDINGS.
 IN SECS. 27, 28, 33 & 34, T. 21S, R. 12W, W. M.
 Platted Jan. 1940 from field surveys & official records
 Scale 1" = 600 ft A. Boyer Reg. Engr. Dep. Co. Sur.
 C.A.B.