

M 1-40

COUNTY SURVEYORS FILE DATA
DO NOT REMOVE FROM OFFICE

N.E. COR.
D.L.C. 47

SEC. COR. 14 13
23 24
T. 30 S. R 6 W.

SOUTH 1235.0'

TRUE BRG. S. 46° 21' W. 4681.6'

RIDDLE CITY LIMITS

EAST 493.0'

INITIAL POINT,
TOWN OF RIDDLE

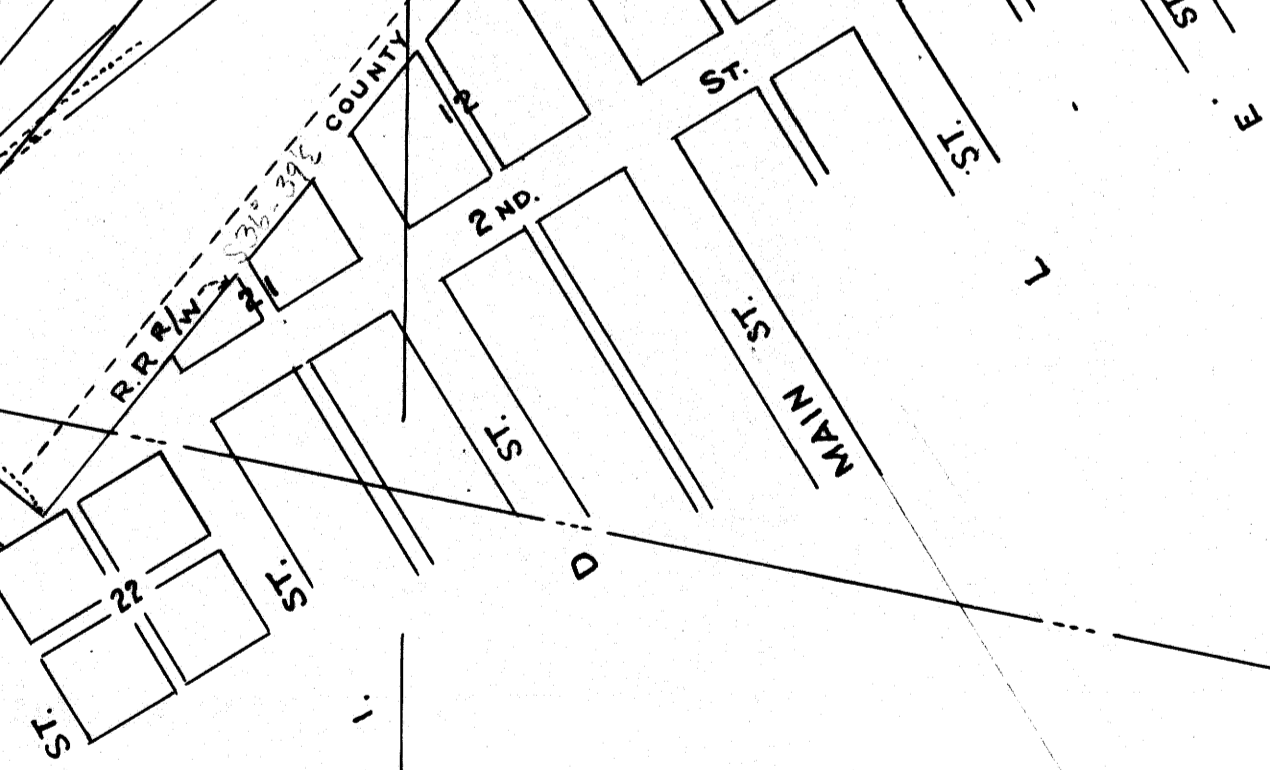
E. MAIN TRACK
TRUE BRG. S. 49° 06' W. 1487.1'

S.P. R.R.

RIDDLE CITY LIMITS

UNION OIL CO.

2"x30" Iron Bar
2"x20" Staff
Rein. Bar, 30" lg.
COUNTY ROAD



S. 78° 38' E. 3414.5' TRUE BRG

SE COR. D.L.C. 47

SW COR. D.L.C. 47

NE COR. D.L.C. 45

N.W. COR. D.L.C. 46



MAP FILE M 1-40 C.S. File No. 22/22B

COUNTY SURVEYOR'S OFFICE, ROSEBURG, ORE.

TIES TO UNION OIL CO'S PROPERTY
AT RIDDLE, DOUGLAS COUNTY, OREGON

SCALE, 1" = 200 ft. DRAWN DEC. 17, 1937

DRAWN BY ARTHUR BOYER - *AB*
CHECKED BY

COUNTY SURVEYORS FILE DATA
DO NOT REMOVE FROM OFFICE

N. 0° 33' E. 3905.3' Computed

M 1-40