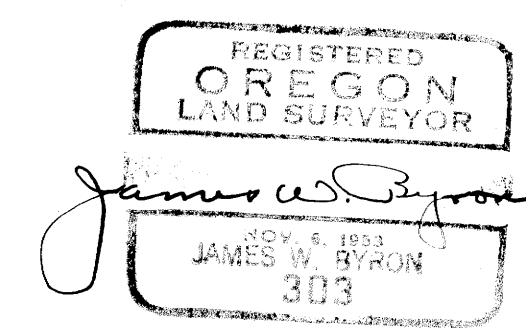


COUNTY SURVEYORS FILE DATA
DO NOT REMOVE FROM OFFICE

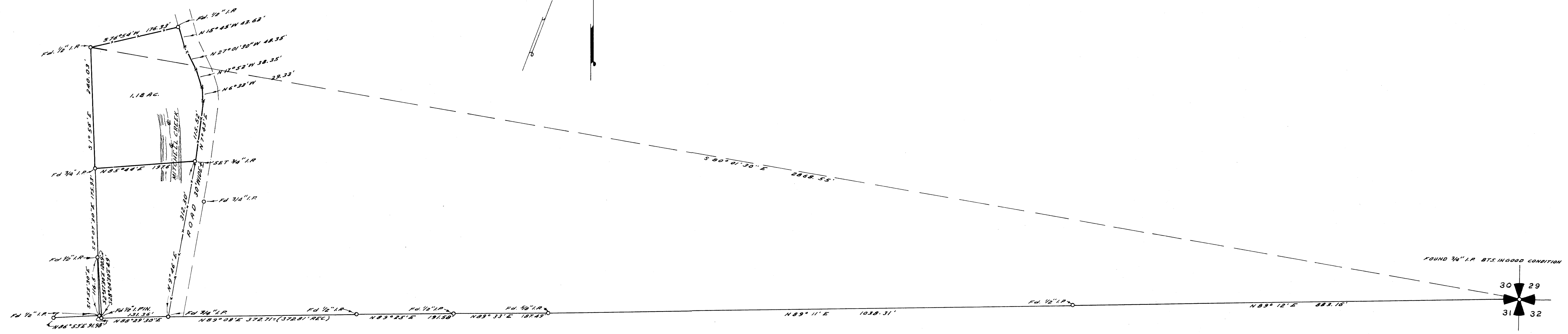
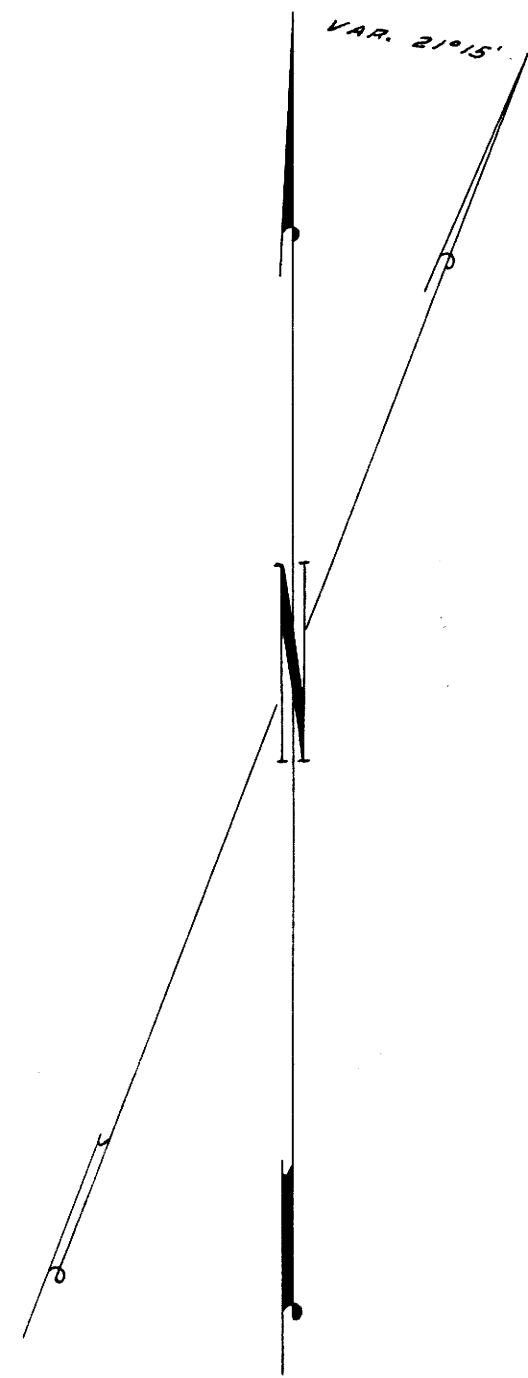
COUNTY SURVEYOR'S OFFICE
DOUGLAS COUNTY, OREGON

SURVEY FOR DEED DESCRIPTION
SECTION 30, T30S, R5W, W.M.

FRED M. DARBY COUNTY SURVEYOR
SURVEYED MAR. 14 1956 BY
JAMES W. BYRON - DEPUTY SCALE 1" = 100'
SURVEYED FOR E. D. KITCHING



NOTE:
BASE BEARING N89°05'E
AS PER SURVEY MADE BY
E. S. WOODFORD MARCH 1955



COUNTY SURVEYORS FILE DATA
DO NOT REMOVE FROM OFFICE