

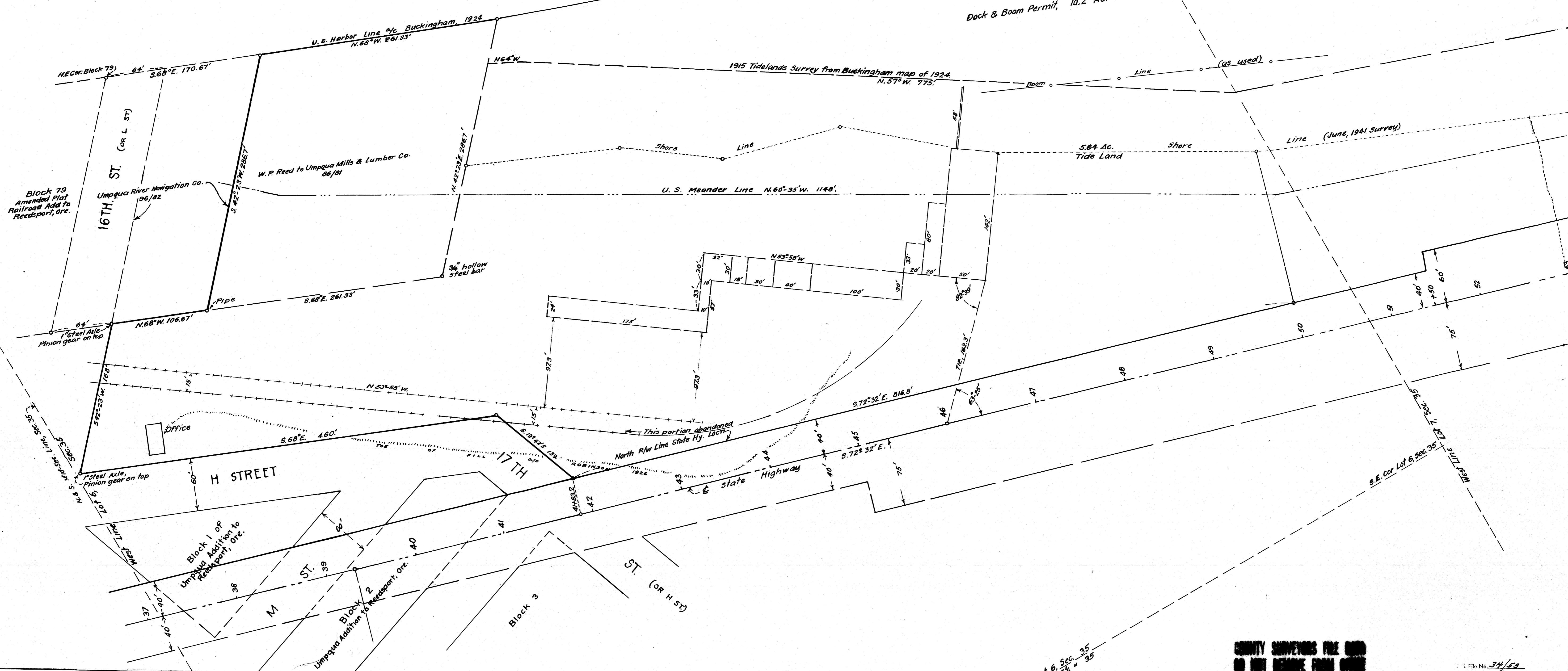
COUNTY SURVEYORS FILE DATA
DO NOT REMOVE FROM OFFICE

RIVER

UMPQUA

Umpqua Mill Dock and Boom Permit Line

Dock & Boom Permit, 10.2 Ac. between low water and Harbor Line, (from Buckingham) in Sec. 35.



Lot 6, Sec. 35
SW 1/4 SE 1/4 " 35

COUNTY SURVEYORS FILE DATA
DO NOT REMOVE FROM OFFICE

See sheet 421