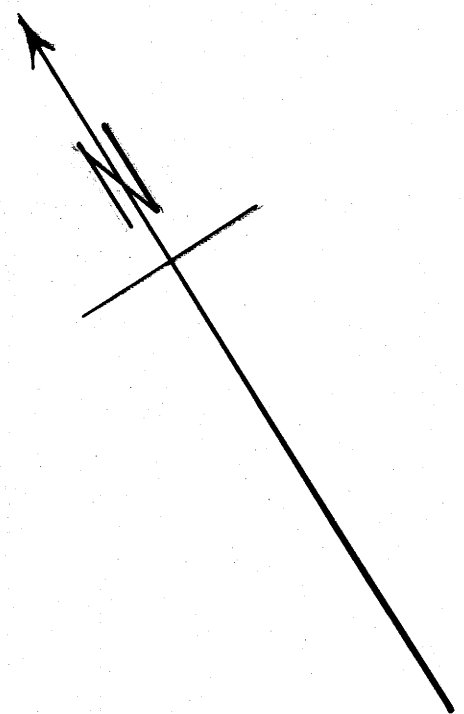
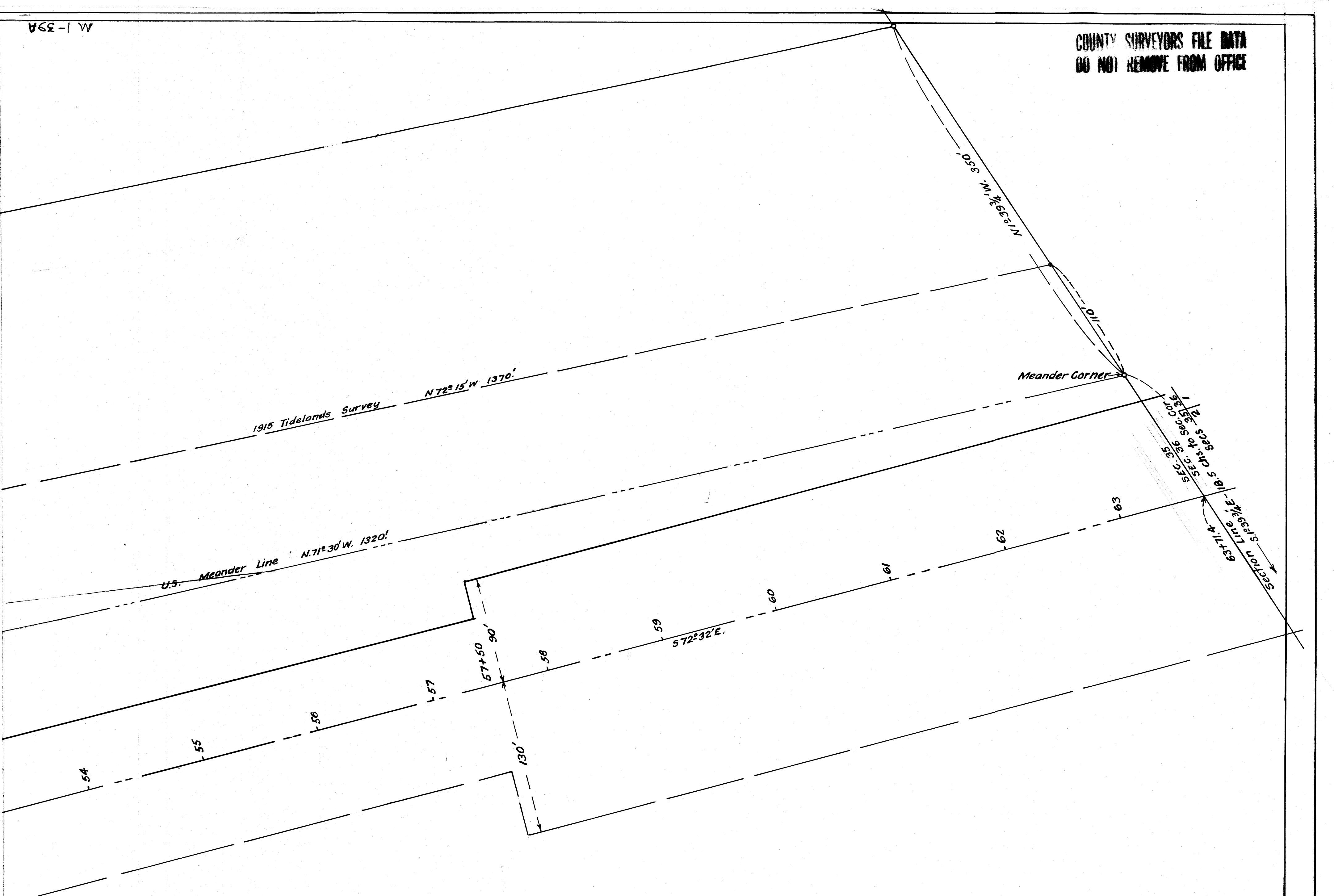


COUNTY SURVEYORS FILE DATA
DO NOT REMOVE FROM OFFICE



C.S. File No. 34/53

COUNTY SURVEYORS OF'S; DOUGLAS COUNTY, ROSEBURG, ORE.
R. J. HUBBARD MILL SITE.
 IN LOTS 6 & 7, SEC. 35, T 21S; R 12 W; W.M.
 AT REEDSPORT, DOUGLAS COUNTY, ORE.
 SCALE, 1" = 50 FT. A. Boyer. JUNE, 1941.

COUNTY SURVEYORS FILE DATA
DO NOT REMOVE FROM OFFICE

Sec Sheet M 2

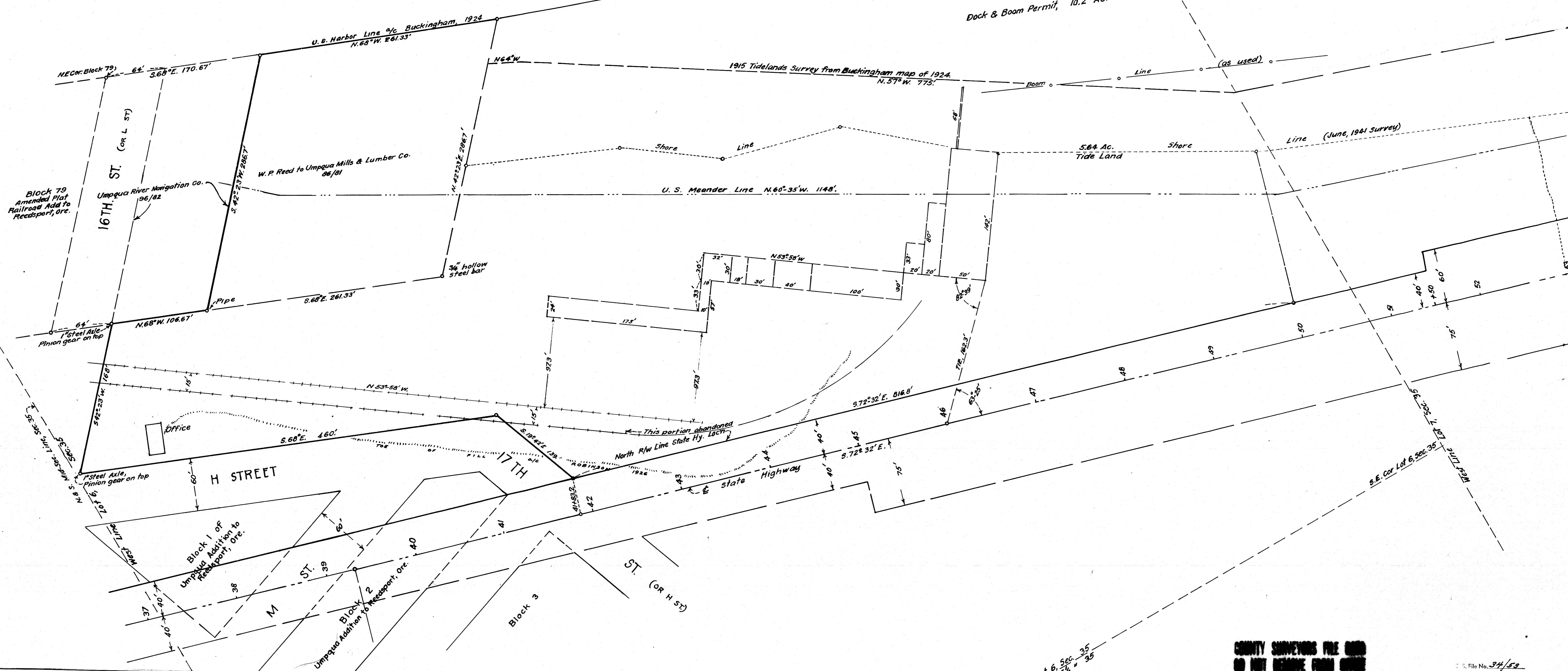
COUNTY SURVEYORS FILE DATA
DO NOT REMOVE FROM OFFICE

RIVER

UMPQUA

Umpqua Mill Dock and Boom Permit Line

Dock & Boom Permit, 10.2 Ac. between low water and Harbor Line, (from Buckingham) in Sec. 35.



Lot 6, Sec. 35
SW 1/4 SE 1/4 " 35

COUNTY SURVEYORS FILE DATA
DO NOT REMOVE FROM OFFICE

See sheet 421