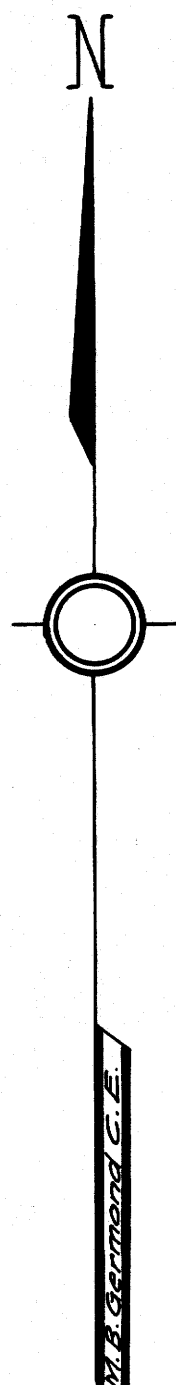


COUNTY SURVEYORS FILE DATA
DO NOT REMOVE FROM OFFICE

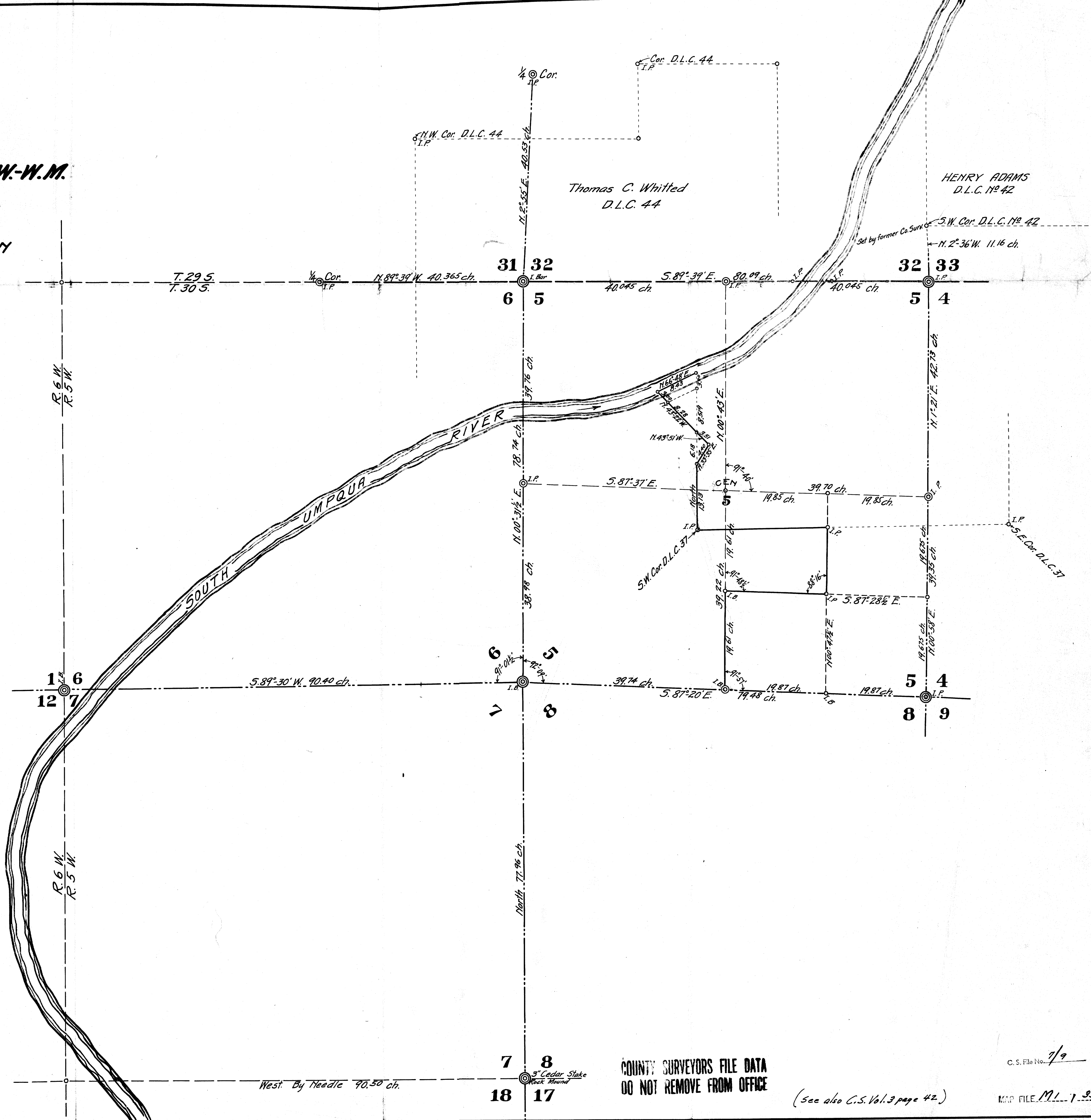
MAP OF
SUB-DIVISION of SEC. 5-T.30S.-R.5W.-W.M.
DOUGLAS COUNTY, - OREGON.

AND
ESTABLISHMENT OF LINES BETWEEN
THE ESTATES OF JOHN R. WEAVER
AND WILLIAM WEAVER (Deceased)

Surveyed by M.B. Germond C.E. Co. Surveyor.
Feb. 1918.



Scale 1 inch = 10 chains



COUNTY SURVEYORS FILE DATA
DO NOT REMOVE FROM OFFICE

(See also C.S. Vol. 3 page 42.)

C. S. File No. 7/9

MAP FILE M.L. 1-25