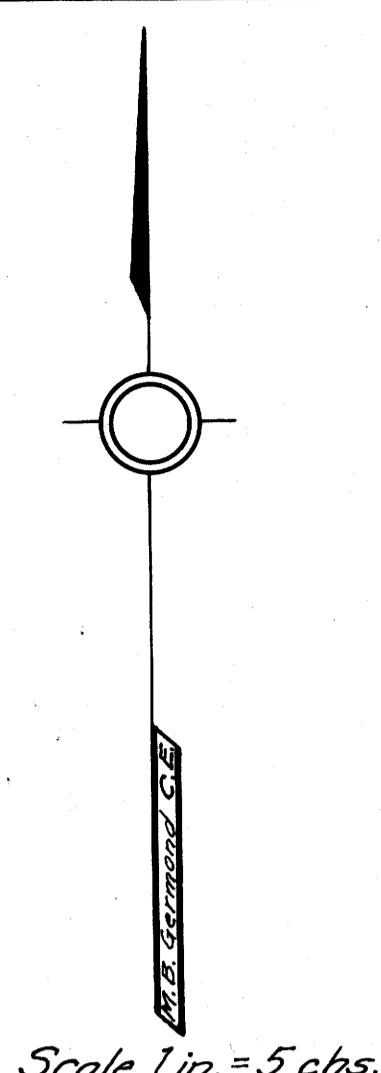


COUNTY SURVEYORS FILE DATA
DO NOT REMOVE FROM OFFICE



MAP SHOWING SUB-DIVISION OF SEC. 24-T.29S.-R.4W.-W.M. DOUGLAS COUNTY, ORE.

Area of SEC. 24 461.17 Ac.
Area of B.W. Cody's Land 102.9 Ac.
Area of Hugh Black's Land 33.2 Ac.
Bearings are from Sun.
M.B. Germond C.E. County Surveyor.
August 1918.

COR. No	Description	Bearing	Trees
S.W. Cor.	5' Cedar Post	8" Cedar N. 46° 40' E.	32 1/2 Lks.
	2 1/2" x 40" I. Pipe	24" " S. 67° E.	24 "
		24" " S. 63° W.	9 "
		40" Fir N. 36 1/2° W.	25 "
1/4 S. Cor.	1 1/4" x 40" G.I. Pipe	18" Fir S. 52 1/2° E.	20 Lks.
Govt. 1/4 Cor.	2" x 30" G.I. Pipe	40" Yellow Pine S. 20° W.	2.10 ch.
		18" White Oak S. 15 1/2° E.	77 Lks.
4	1" x 40" I. Pipe	40" Red Fir S. 36 1/2° W.	2.78 ch.
		8" " S. 47° 05' E.	2.66 "
5	1" x 30" I. Pipe	10" Fir S. 28 1/2° E.	0.127 ch.
		8" " N. 55 1/2° E.	17 Lks.
6	1" x 18" I. Bolt	12" Forked Alder S. 25 1/2° W.	33 Lks.
		24" Alder N. 76° 10' W.	43 Lks.
8	1" x 36" I. Pipe	24" Fir S. 88 1/2° W.	7 1/2 Lks.
		8" " N. 35 1/2° W.	20 Lks.
9	1" x 30" I. Pipe	24" " N. 38 1/2° E.	51 "
		18" Cedar N. 80 1/2° E.	28 1/2 "
10	1" x 50" I. Pipe	10" Cedar N. 11 1/4° E.	10 1/2 Lks.
		8" " N. 80° E.	14 "
11	1" x 30" I. Pipe	14" Fir N. 39 1/2° W.	55 Lks.
		10" " S. 39 1/2° E.	13 1/2 "
12	2" x 30" Gal. I. Pipe	10" Cedar N. 52 1/2° W.	8 1/2 Lks.
		10" Fir S. 22° E.	2 "
N.W. Cor. Govt. Cor.	2" x 36" I. Pipe	36" Black Oak N. 25° E.	5 Lks.
		18" " " N. 76° W.	54 "
		30" White " S. 54 1/2° W.	57 "
Govt. 1/4 Cor. On N. Side	5" x 5" x 3" W.D. Post	5" Red Cedar S. 44 1/2° W.	22 1/2 Lks.
N.E. Cor. Govt. Cor.		8" " Fir N. 11 1/2° E.	24 "
S.E. Cor. Govt. Cor.		As per Govt. Field Notes	

Filed Aug. 25, 1918
F.C. Frear
Dep. County Surveyor

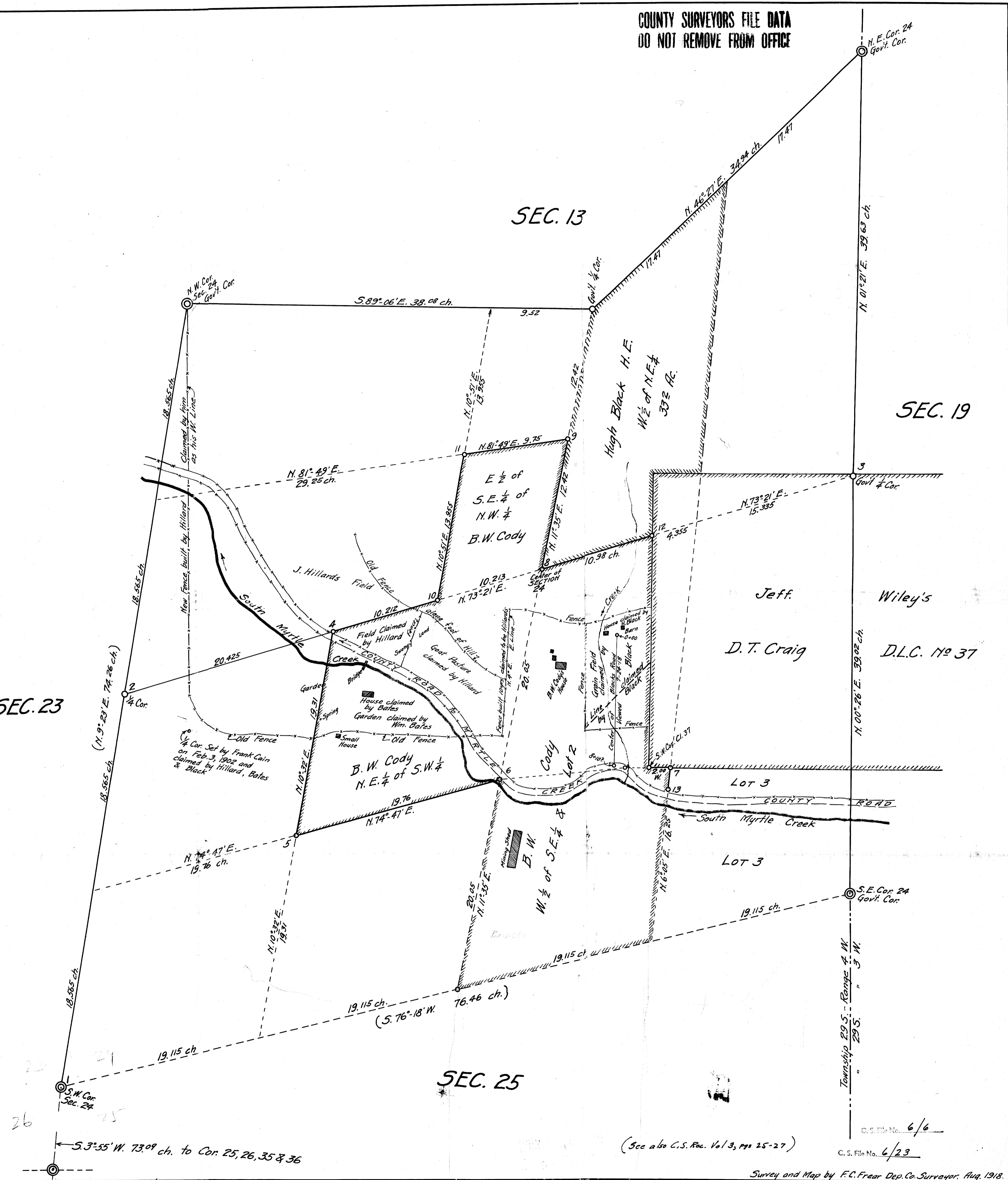
COUNTY SURVEYORS FILE DATA
DO NOT REMOVE FROM OFFICE

SEC. 23

SEC. 13

SEC. 19

SEC. 25



(See also C.S. Rec. Vol 3, pp 25-27)

Survey and Map by F.C. Frear Dep. Co. Surveyor, Aug. 1918.

MAP FILE M.L. 7-23