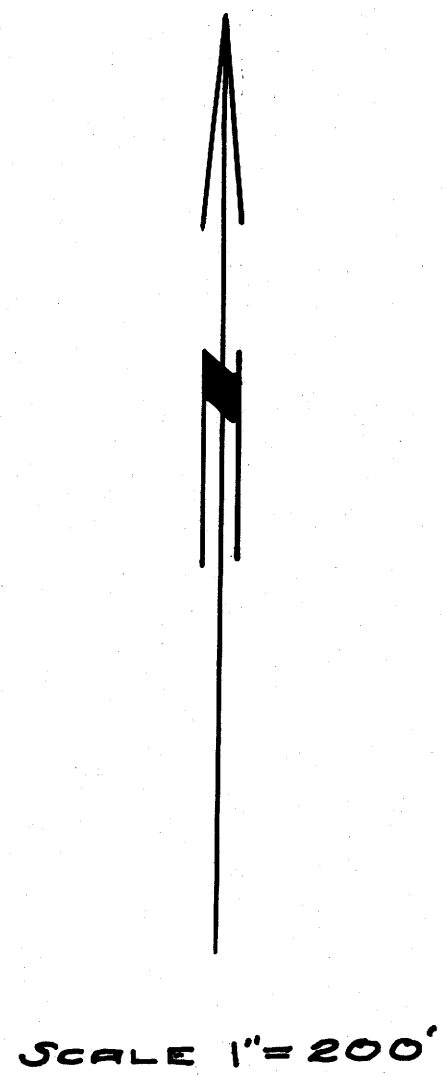
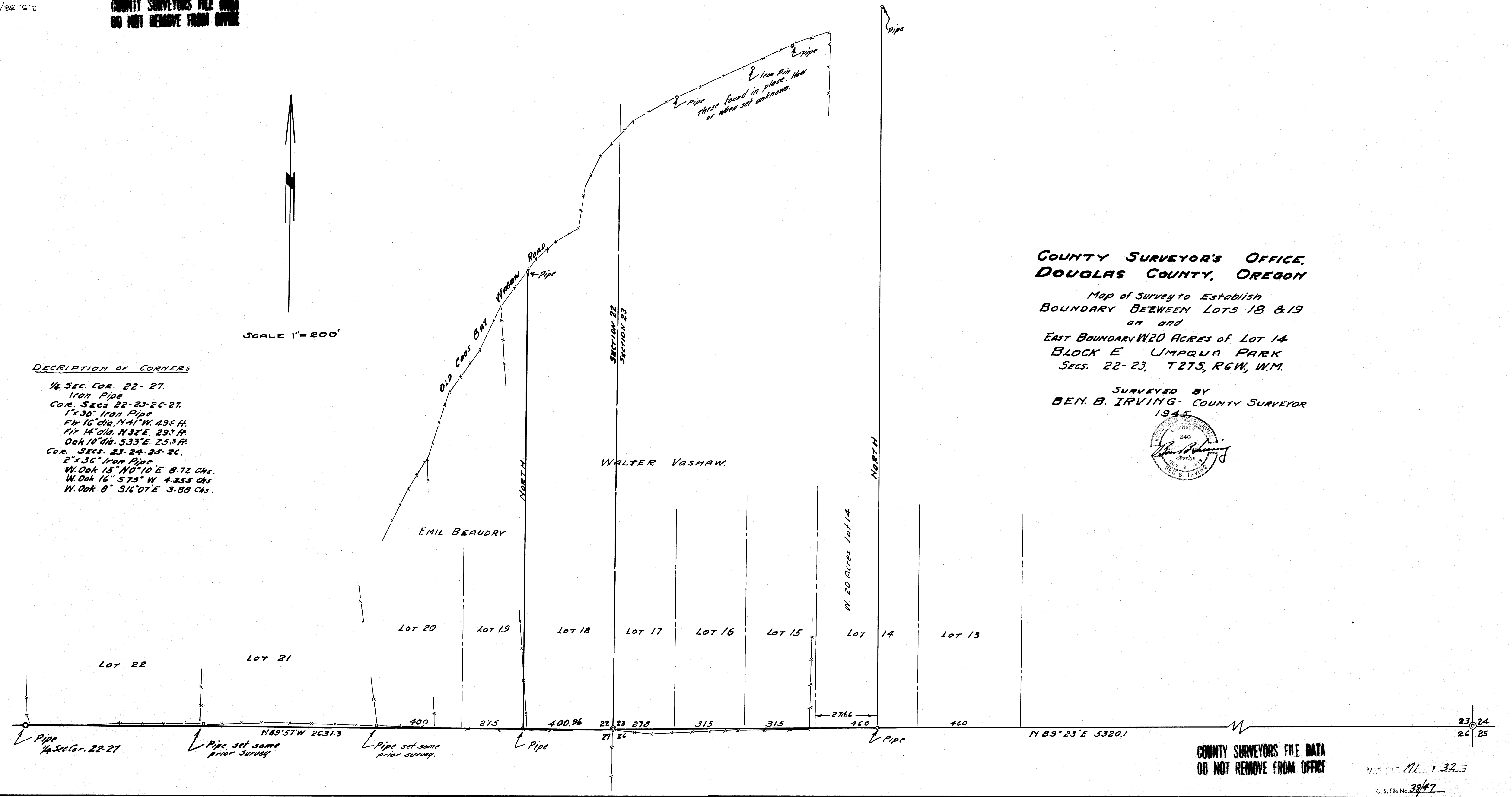


COUNTY SURVEYORS FILE DATA
DO NOT REMOVE FROM OFFICE



DESCRIPTION OF CORNERS

1/4 SEC. COR. 22-27.
Iron Pipe
COR. SECS 22-23-26-27.
1"x30" Iron Pipe
Fir 16" dia. N41°W. 49.6 Ft.
Fir 14" dia. N32°E. 29.7 Ft.
Oak 10" dia. S33°E. 25.3 Ft.
COR. SECS. 23-24-25-26.
2"x36" Iron Pipe
W. Oak 15" N0°10'E 8.72 Chs.
W. Oak 16" S75°W 4.355 Chs.
W. Oak 8" S16°07'E 3.88 Chs.



COUNTY SURVEYOR'S OFFICE,
DOUGLAS COUNTY, OREGON

Map of Survey to Establish
BOUNDARY BETWEEN LOTS 18 & 19
an and
EAST BOUNDARY W20 ACRES of LOT 14
BLOCK E UMPQUA PARK
SECS. 22-23, T27S, R6W, W.M.

SURVEYED BY
BEN. B. IRVING- COUNTY SURVEYOR



COUNTY SURVEYORS FILE DATA
DO NOT REMOVE FROM OFFICE