

SEC 24

Set 1 1/4" G.I.P. FOR E 1/6 S24-S25.  
BLAZED & SCRIBED B.T.S.  
8" LAUREL S25W, 7 1/2 FT.  
Mkd. E 1/6, S25, C.S.B.T.  
8" CEDAR, NORTH, 25 1/2 FT.  
Mkd. W 1/6 S24, C.S.B.T.

Set 3/4" GALV. IRON PIPE FOR  
W 1/6 COR. Sec. 24 & 25.  
BLAZED & SCRIBED BEARING TREES.  
20" LAUREL, N64°W, 22 FT.  
Mkd. W 1/6, S24, C.S.B.T.  
15" LAUREL, SOUTH, 25 FT.  
Mkd. W 1/6 S25, C.S.B.T.

FOUND 1 1/2" IRON PIPE, SET FOR  
Sec. COR. 23-25, BY DEP. CO. SURVEYOR  
IN 1918.  
8" CEDAR, N46°40'E, 32 1/2 IKS.  
24" CEDAR, S47E, 24 IKS.  
24" CEDAR, S63W, 9 IKS.  
40" FIR, N36 1/2 W, 25 IKS.  
ALL ALIVE & STANDING

FD. ROTTED &  
BURNED STUMPS OF  
20 B.T.S. FIR N60W, 25 IKS.  
FIR S55W, 15 IKS. SCRIBE  
MARKS VISIBLE.  
Set 1" G.I.P. WITH BRASS CAP  
FOR SEC. COR. 24-25 ONLY; BRASS  
CAP MKD. COUNTY SURVEYOR'S  
OFFICE, T29S, R4W, SEC. COR. 24-25  
RE. 2741.  
BLAZED & SCRIBED B.T.S.  
30" FIR N70°W, 14 1/2 FT.  
Mkd. T29S, R4W, S24, C.S.B.T.  
NAILED BRASS DISK ON ABOVE B.T.,  
Mkd. Co. SURVEYOR'S OFFICE, SEC. COR.  
24 & 25, T29S, R4W, SET BY REG.  
ENGR. ORE. NO. 2741.  
24" FIR, S40°E, 20 1/2 FT. Mkd. T29S, R4W,  
S25, C.S.B.T. NO SUITABLE TREES  
IN SEC. 25, AVAILABLE

1/4 COR. SECS. 24 & 25 REESTABLISHED  
BY PROPORTIONATE MEAS.  
SET 1 1/4" x 30" IRON PIPE, 6" UNGRD.  
BLAZED & SCRIBED B.T.S.  
30" CEDAR, N10 1/2 W, 28 1/2 FT.  
Mkd. T29S, R4W, 1/4 S24, C.S.B.T.  
6" FIR, S16 1/4 E, 28 1/2 FT.  
Mkd. T29S, R4W, 1/4 S25, C.S.B.T.  
NAILED BRASS DISK TO CEDAR B.T.  
Mkd. DOUG. CO. SURVEYOR  
1/4 COR. 24-25; SET BY REG.  
ENGR. ORE. NO. 2741

MARKED 48" FIR FOR CN 1/6 COR.  
BLAZE 3 SIDES. SCRIBE E. FACE  
CN 1/6 COR, S25, C.S.B.T. RE. 2741  
BLAZE & SCRIBE B.T.  
12" CEDAR, N 85 W, 20 FT. Mkd.  
CN 1/6 COR, S25, C.S.B.T.

Set 3/4" G.I.P. FOR  
CE 1/6 COR.  
BLAZE & SCRIBE B.T.S.  
20" FIR, S18W, 12 FT.  
20" CEDAR, N50W, 9 FT.  
BOTH MARKED  
CE 1/6 S25  
C.S.B.T.

1/4 COR.  
EAST SIDE SEC. 25,  
REESTABLISHED BY  
PROPORTIONATE MEAS.  
SET 3/4" x 36" GALV. IRON PIPE  
BLAZE & SCRIBE B.T.S.  
10" FIR, N55W, 8 1/2 FT.  
Mkd. T29S, R4W, E 1/4 S25, C.S.B.T.  
15" LAUREL, S35W, 41 1/2 FT.  
Mkd. T29S, R4W, E 1/4 S25, C.S.B.T.  
NAILED BRASS DISK TO  
LAUREL, Mkd. Co. SURVEYOR'S  
OFFICE, 29-4 E 1/4 S-25  
SET BY REG. ENGR. ORE  
NO. 2741.

FIND O.B.T.S. FOR SEC. COR.  
W. OAK STUMP, N 32 W.  
DEF. AXE MARKS, 2 BLAZES  
DEAD & FACE OF BLAZE ROTTED  
B. OAK, N37E, DOWN &  
DEAD, & FACE OF BLAZE ROTTED  
AXE MARK & BLAZE DEFINITE  
ORIGINAL DISTANCES INTERSET.  
FACINGS CHECK FOR DIRECTION  
SET 1" GALV. IRON PIPE  
BRASS CAP, MARKED.  
CO. SURVEYOR'S  
OFFICE, T29S, R4W,  
SEC. COR. 25-36 RE. 2741.  
BLAZE & SCRIBE B.T.S.  
18" FIR, S26W, 27 1/2 FT.  
Mkd. T29S, R4W, S36, C.S.B.T.  
15" FIR, N80W, 21 1/2 FT.  
Mkd. T29S, R4W, S25, C.S.B.T.  
NAILED BRASS DISK TO 15" FIR  
Mkd. Co. SURVEYOR'S OFFICE  
T29S, R4W, S25-36.  
SET BY REG. ENGR. ORE #2741

C 1/4 COR.  
SET 3/4" x 36" GALV. IRON PIPE  
FOR CENTER 1/4 CORNER  
BLAZED AND SCRIBED B.T.S.  
18" FIR, N 42 E, 57 1/2 FT.  
15" CEDAR, S65W, 78 1/2 FT.  
BOTH MKD. T29S, R4W,  
C 1/4 S25, C.S.B.T.

Set 3/4" G.I.P.  
FOR CW 1/6 COR.  
BLAZE & SCRIBE B.T.S.  
26" FIR, S15E, 19 1/2 FT.  
18" FIR, N65W, 16 1/2 FT.  
BOTH MARKED.  
CW 1/6, S25,  
C.S.B.T.

Set 1/2" IRON PIPE FOR NW 1/6 COR.  
18" CEDAR, S55°E, 14 1/2 FT. MKD.  
NW 1/6 COR, S25, C.S.B.T.

LOCATION OF N 1/6 COR.  
25-26 IN LARGE SAWDUST  
PILE. SET WITNESS  
COR. AS NOTED

Set 1 1/4" IRON PIPE  
FOR WC. N 1/6 25-26

1/4 COR. SECS. 25 & 26  
REESTABLISHED BY  
PROPORTIONATE MEAS.  
SET 1 1/4" x 36" IRON PIPE  
BLAZED & SCRIBED B.T.S.  
14" LAUREL, N46E, 24 1/2 FT.  
Mkd. T29S, R4W, 1/4 S25, C.S.B.T.  
14" FIR, S35W, 11 1/2 FT.  
Mkd. T29S, R4W, 1/4 S26, C.S.B.T.  
NAILED BRASS DISK ON FIR  
Mkd. Co. SURVEYOR'S OFFICE,  
1/4 SEC. COR. 25-26, SET BY  
REG. ENGR. ORE. NO. 2741

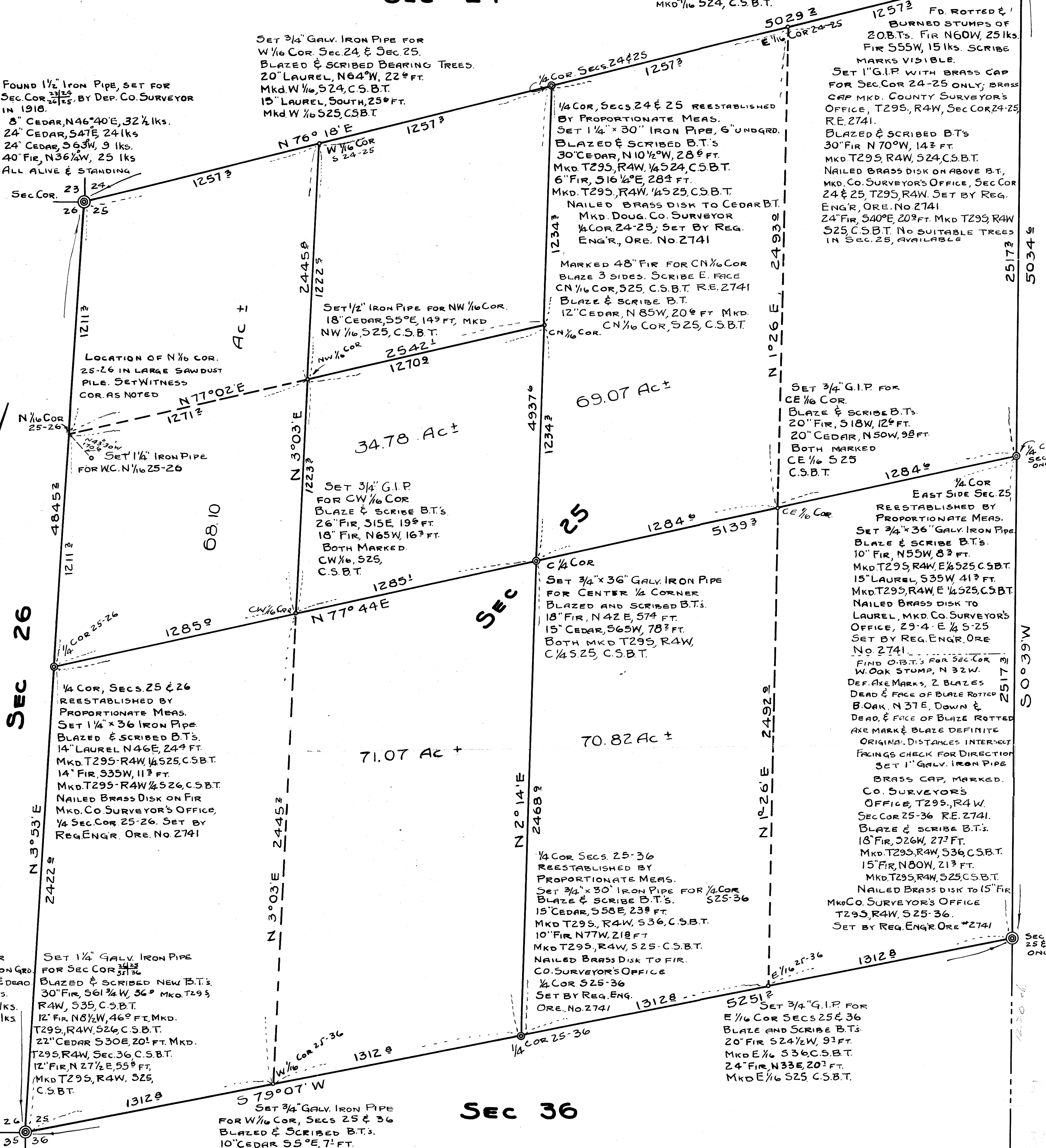
Fd. 4" x 4" CEDAR  
STAKE, ROTTED & ON GRD.  
3 O.B.T.S. STANDING & DEAD  
14" LAUREL, S15E, 13 IKS.  
18" LAUREL, N35E, 62 IKS.  
10" LAUREL, N70W, 15 IKS.

Set 1 1/4" GALV. IRON PIPE  
FOR SEC. COR. 25-26  
BLAZED & SCRIBED NEW B.T.S.  
30" FIR, S61 1/4 W, 36 FT. MKD. T29S,  
R4W, S35, C.S.B.T.  
12" FIR, N8 1/2 W, 46 FT. MKD.  
T29S, R4W, S26, C.S.B.T.  
22" CEDAR, S30E, 20 FT. MKD.  
T29S, R4W, Sec. 36, C.S.B.T.  
12" FIR, N 27 1/2 E, 55 1/2 FT.  
Mkd. T29S, R4W, S25,  
C.S.B.T.

Set 3/4" GALV. IRON PIPE  
FOR W 1/6 COR. SECS. 25 & 36  
BLAZED & SCRIBED B.T.S.  
10" CEDAR, S55°E, 7 FT.  
Mkd. W 1/6, S36, C.S.B.T.  
18" FIR, N28E, 5 FT.  
Mkd. W 1/6, S25, C.S.B.T.

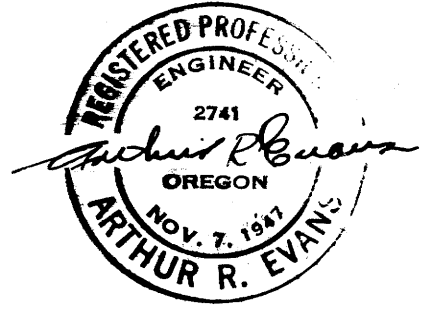
SEC 36

NOTE: ALL BEARINGS CALCULATED FROM ANGLES TURNED  
IN DEFLECTION FROM MERIDIAN ESTABLISHED BY SOLAR  
OBSERVATION AT EAST 1/4 COR. SEC. 24, T29S, R4W, TAKEN DURING  
COURSE OF POWER LINE SURVEY FOR HOLLINGER TAP-LINE BY B.B.  
IRVING, DEPUTY COUNTY SURVEYOR IN OCTOBER, 1940.



COUNTY SURVEYOR'S OFFICE  
DOUGLAS COUNTY OREGON  
LEGAL SURVEY FOR SUBDIVISION  
OF SECTION 25, T29S, R4W. WM.

BEN B. IRVING COUNTY SURVEYOR  
SURVEYED, APRIL-MAY, 1949, BY  
A.R. EVANS DEP. COUNTY SURVEYOR  
SCALE 1" = 300'



T29S, R4W  
T29S, R3W