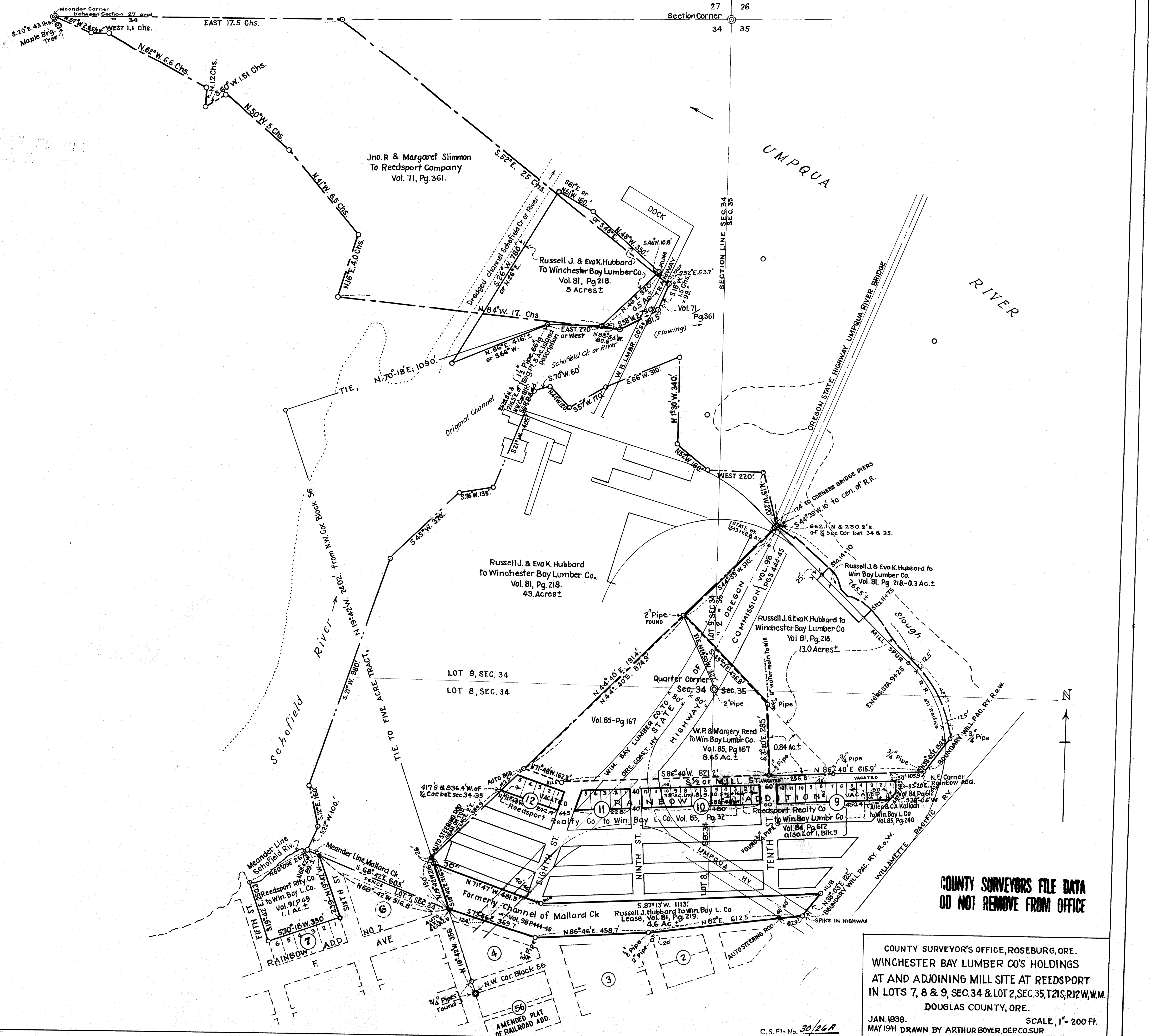


02-1 VV
472/02 S'D



**COUNTY SURVEYORS FILE DATA
DO NOT REMOVE FROM OFFICE**

COUNTY SURVEYOR'S OFFICE, ROSEBURG, ORE.
 WINCHESTER BAY LUMBER CO'S HOLDINGS
 AT AND ADJOINING MILL SITE AT REEDSPORT
 IN LOTS 7, 8 & 9, SEC. 34 & LOT 2, SEC. 35, T21S, R12W, W.M.
 DOUGLAS COUNTY, ORE.

JAN. 1938. SCALE, 1" = 200 FT.
 MAY 1941 DRAWN BY ARTHUR BOYER, DER. CO. SUR

C. S. File No. 30/26R

MAP FILE 171-130