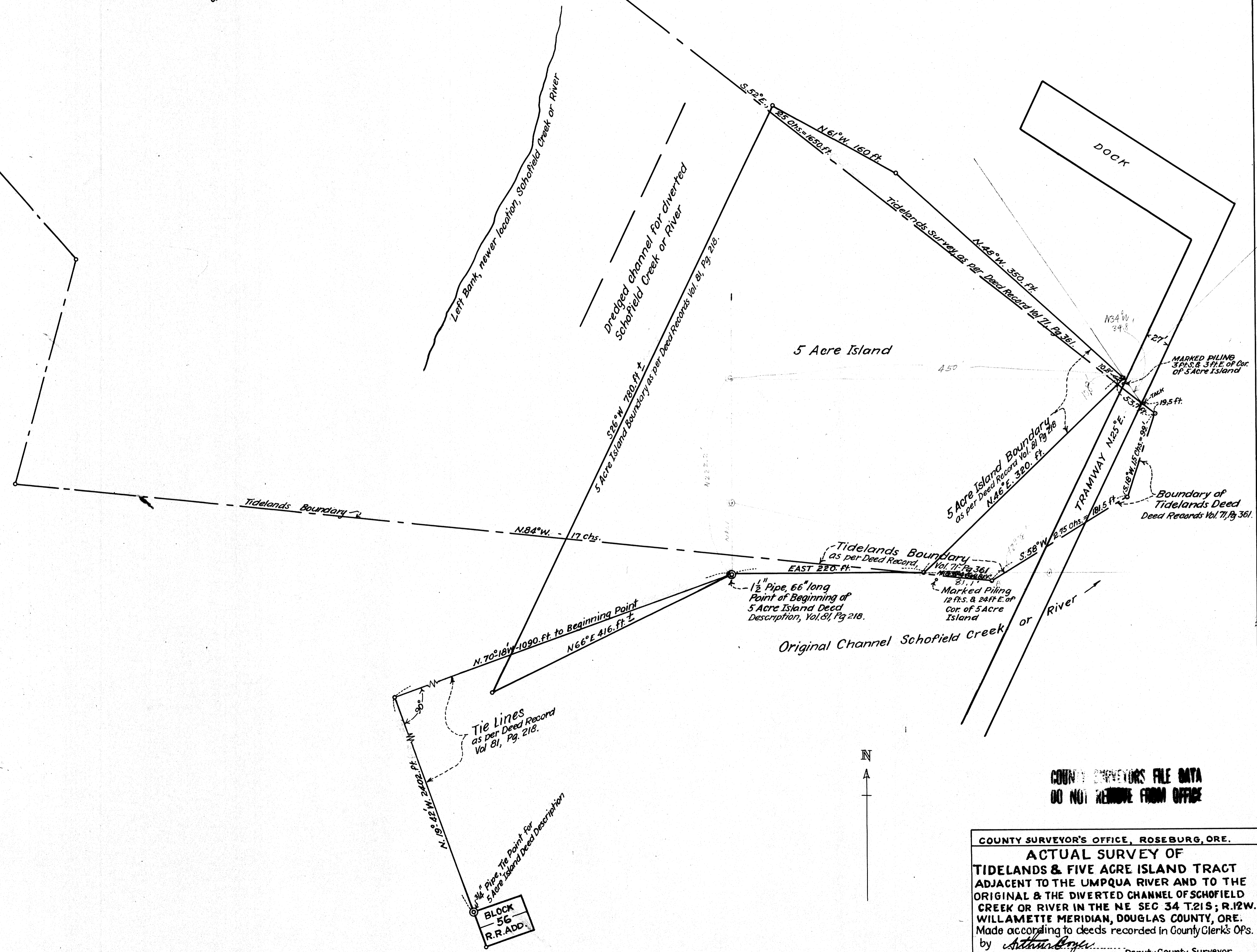


Sec. 27  
Sec. 34  
S. 20° E, 48 lks.  
Maple Bearing Tree  
(Meander Cor bet. Secs. 27 & 34  
Beginning of Tidelands Deed Description, Vol. 71, Pg. 361.  
EAST, 17.5 Chs. = 1155.0 Ft.

Umpqua River



COUNTY SURVEYORS FILE DATA  
DO NOT REMOVE FROM OFFICE

COUNTY SURVEYOR'S OFFICE, ROSEBURG, ORE.  
**ACTUAL SURVEY OF  
TIDELANDS & FIVE ACRE ISLAND TRACT**  
ADJACENT TO THE UMPQUA RIVER AND TO THE  
ORIGINAL & THE DIVERTED CHANNEL OF SCHOFIELD  
CREEK OR RIVER IN THE NE SEC 34 T.21S; R.12W.  
WILLAMETTE MERIDIAN, DOUGLAS COUNTY, ORE.  
Made according to deeds recorded in County Clerk's O.P.s.  
by Arthur E. Boyer, Deputy County Surveyor.  
Scale, 1" = 60 ft. Aug, 1937.

BLOCK  
56  
R.R. ADD.