

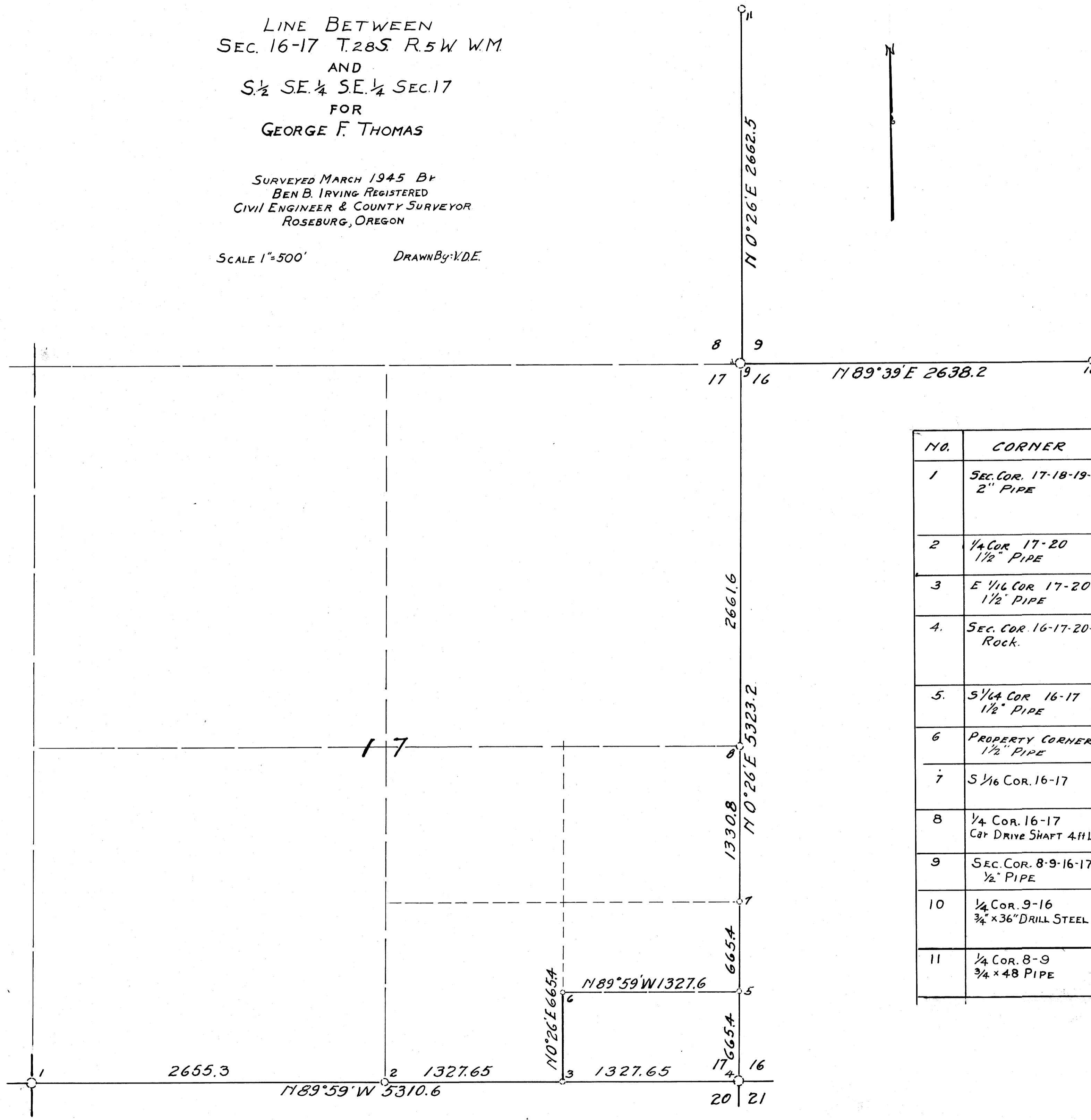
**COUNTY SURVEYORS FILE DATA
 DO NOT REMOVE FROM OFFICE**

LINE BETWEEN
 SEC. 16-17 T.28S. R.5W W.M.
 AND
 S 1/2 SE 1/4 SE 1/4 SEC. 17
 FOR
 GEORGE F. THOMAS

SURVEYED MARCH 1945 BY
 BEN B. IRVING REGISTERED
 CIVIL ENGINEER & COUNTY SURVEYOR
 ROSEBURG, OREGON

SCALE 1"=500'

DRAWN BY: V.D.E.



NO.	CORNER	BEARING TREES
1	SEC. COR. 17-18-19-20 2" PIPE	White Oak N19°E. 17 lks Black Oak 20" S72°E 50 ft. White Oak 16" S56°45'W 49.0 ft. Black Oak 10" N59°30'W 89.2 ft.
2	1/4 COR. 17-20 1 1/2" PIPE	Oak 8" N30°E 96.5 ft. Oak 54" S64°E 92.2 ft.
3	E 1/16 COR. 17-20 1 1/2" PIPE	Oak 14" N21°E 47.4 ft. Oak 20" S43°W 19.3 ft.
4	SEC. COR. 16-17-20-21 Rock.	Fir 12" N42 1/2°W 17.2 ft. Madronna 6" N53 1/2°E 26.5 ft. Fir 10" S74°E 78.9 ft. Fir 7" S25 1/2°W 19.6 ft.
5	S 1/4 COR. 16-17 1 1/2" PIPE	Fir 8" S30°W 21.0 ft. Oak 14" N75°E 53.1 ft.
6	PROPERTY CORNER. 1 1/2" PIPE	Oak 12" S75°E 11.0 ft.
7	S 1/16 COR. 16-17	Fir 14" S65°E 20 ft. Oak 8" N62°W 49.2 ft.
8	1/4 COR. 16-17 Car Drive Shaft 4 ft LONG	Oak 12" S2°W 138.2 ft. Oak 12" S32°E 61.3 ft.
9	SEC. COR. 8-9-16-17 1/2" PIPE	Forked Oak N86°E 33.2 ft.
10	1/4 COR. 9-16 3/4" x 36" DRILL STEEL	Yellow Oak N52°E White Oak S60 1/2°E 56 lks. Oak 10" N70°E 29.2 ft.
11	1/4 COR. 8-9 3/4" x 48" PIPE	Black Oak 14" N83°W 49.6 ft. Black Oak 10" S77°E 4.2 ft.

**COUNTY SURVEYORS FILE DATA
 DO NOT REMOVE FROM OFFICE**

Ben B. Irving