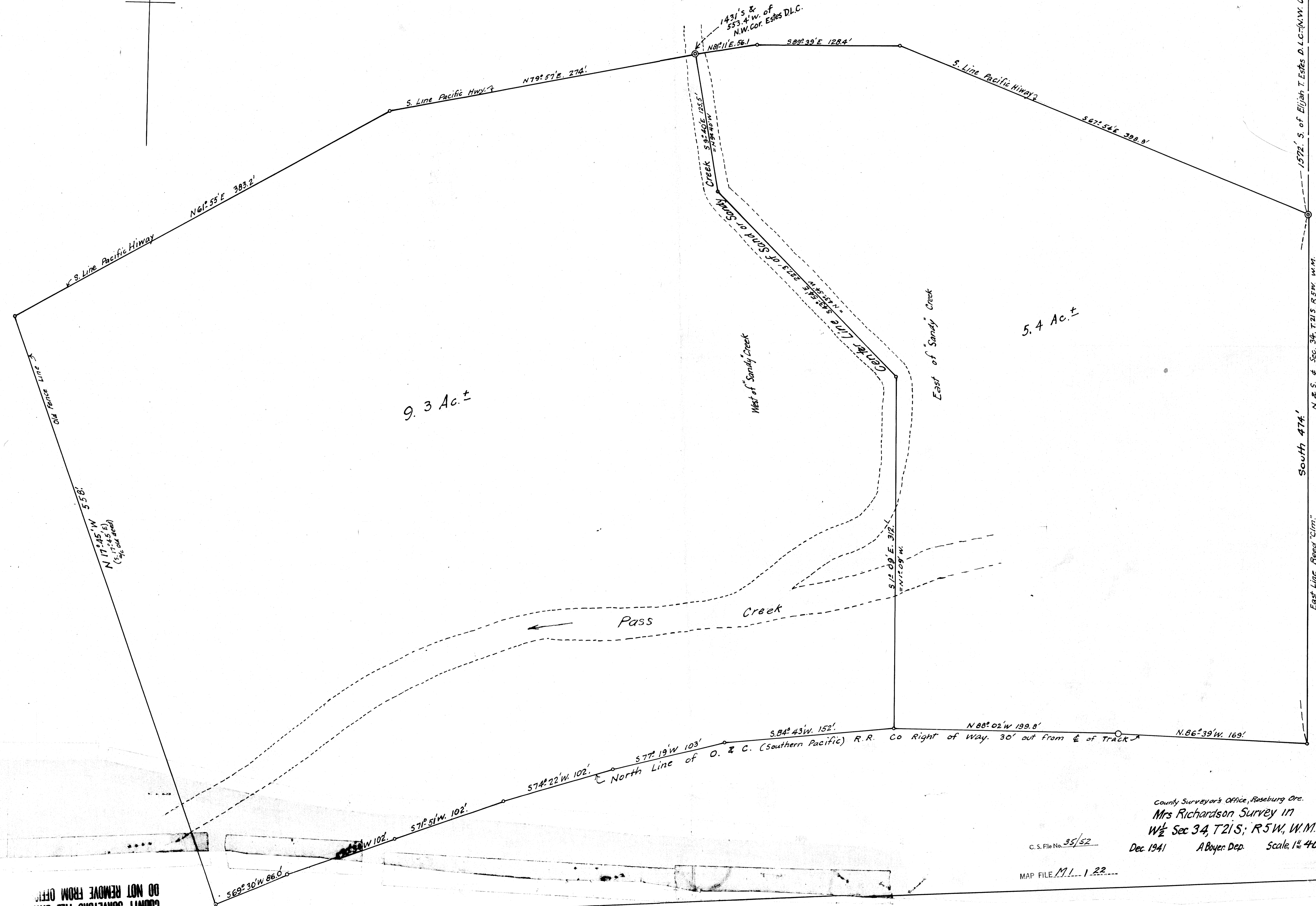
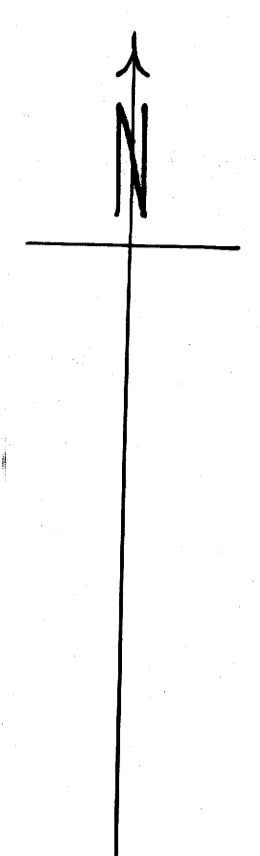


DO NOT REMOVE FROM OFFICE
COUNTY SURVEYORS FILE DATA



9.3 Ac.±

5.4 Ac.±

South 474'

DO NOT REMOVE FROM OFFICE
COUNTY SURVEYORS FILE DATA

C.S. File No. 35/52

County Surveyor's Office, Roseburg Ore.
Mrs Richardson Survey 117
W 1/2 Sec 34, T21S; R5W, W.M.
Dec. 1941 A Boyer Dep. Scale 1" = 40 ft.

MAP FILE M.L. 1-22