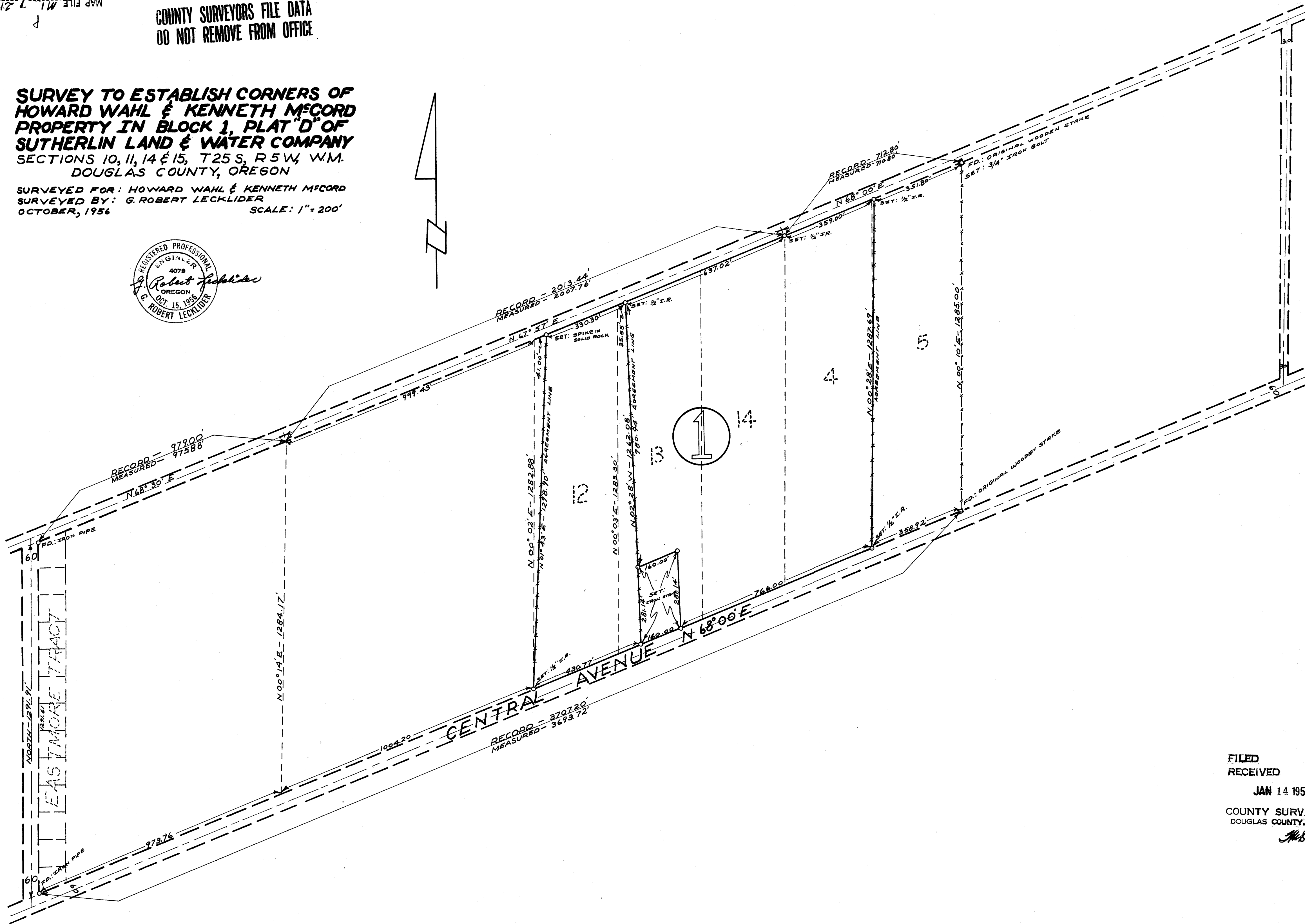
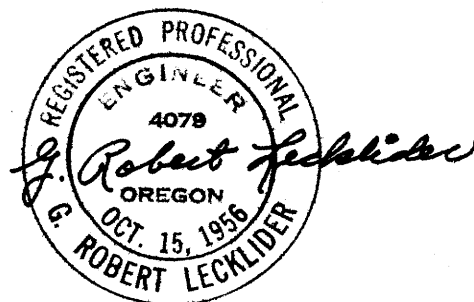


COUNTY SURVEYORS FILE DATA
DO NOT REMOVE FROM OFFICE

**SURVEY TO ESTABLISH CORNERS OF
HOWARD WAHL & KENNETH McCORD
PROPERTY IN BLOCK 1, PLAT "D" OF
SUTHERLIN LAND & WATER COMPANY
SECTIONS 10, 11, 14 & 15, T25 S, R5 W, W.M.
DOUGLAS COUNTY, OREGON**

SURVEYED FOR: HOWARD WAHL & KENNETH McCORD
SURVEYED BY: G. ROBERT LECKLIDER
OCTOBER, 1956 SCALE: 1" = 200'



FILED
RECEIVED
JAN 14 1956
COUNTY SURVEYOR
DOUGLAS COUNTY, ORE.
ML

COUNTY SURVEYORS FILE DATA
DO NOT REMOVE FROM OFFICE

(SEE ALSO M 11-32)