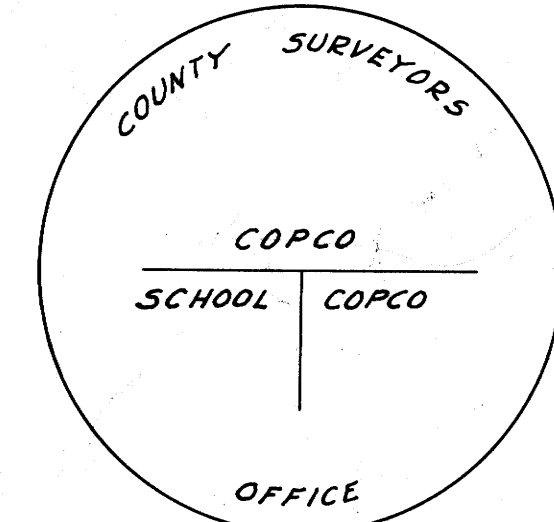
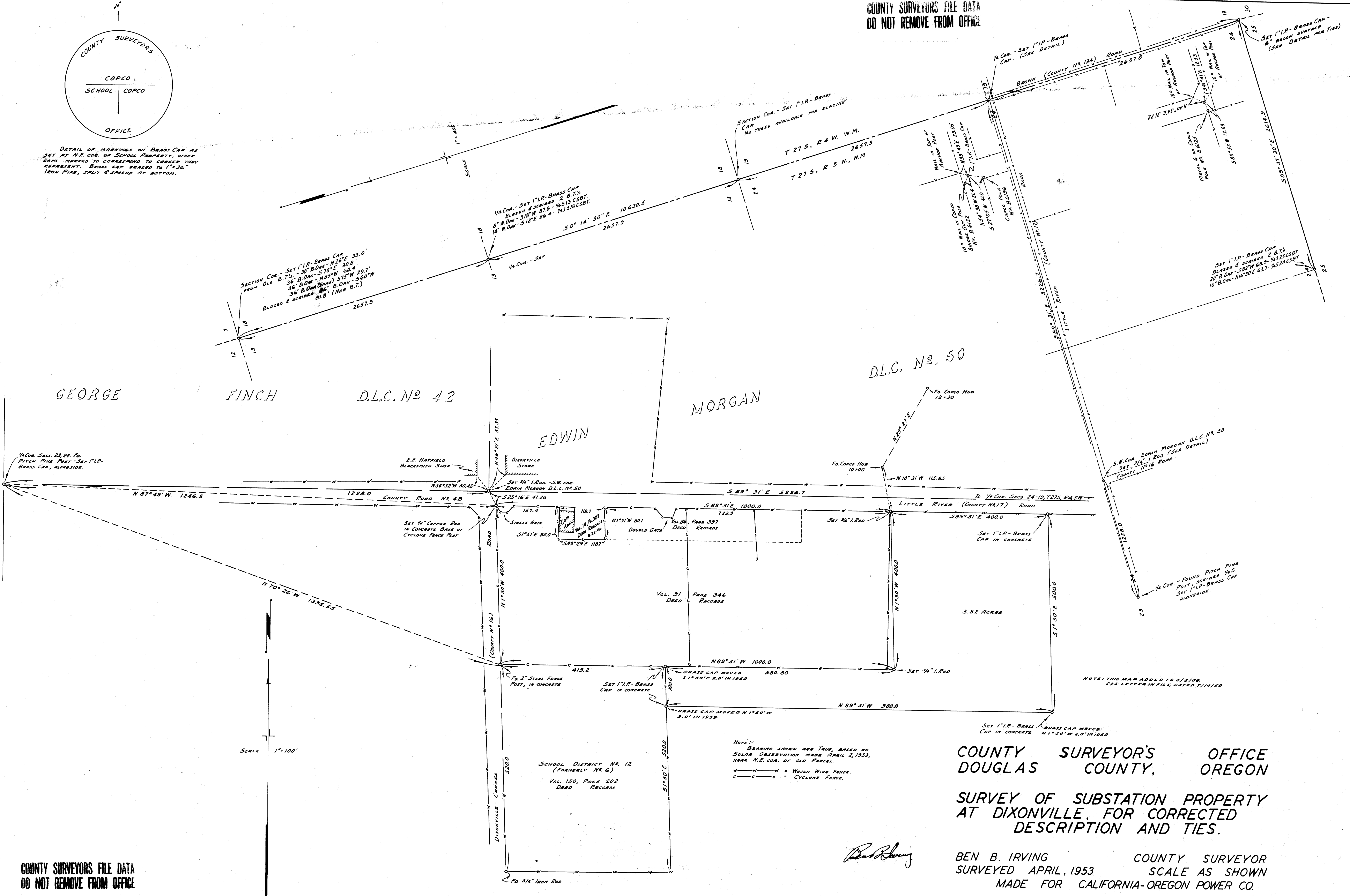


COUNTY SURVEYORS FILE DATA DO NOT REMOVE FROM OFFICE



DETAIL OF MARKINGS ON BRASS CAP AS SET AT N.E. COR. OF SCHOOL PROPERTY, OTHER MARKS MARKED TO CORRESPOND TO CORNER THEY REPRESENT. BRASS CAP BRAZED TO 1/4" 3/8" IRON PIPE, SPLIT & SPREAD AT BOTTOM.



SCALE 1"=100'

COUNTY SURVEYORS FILE DATA DO NOT REMOVE FROM OFFICE

COUNTY SURVEYOR'S OFFICE DOUGLAS COUNTY, OREGON

SURVEY OF SUBSTATION PROPERTY AT DIXONVILLE, FOR CORRECTED DESCRIPTION AND TIES.

BEN B. IRVING COUNTY SURVEYOR SURVEYED APRIL, 1953 SCALE AS SHOWN MADE FOR CALIFORNIA-OREGON POWER CO.