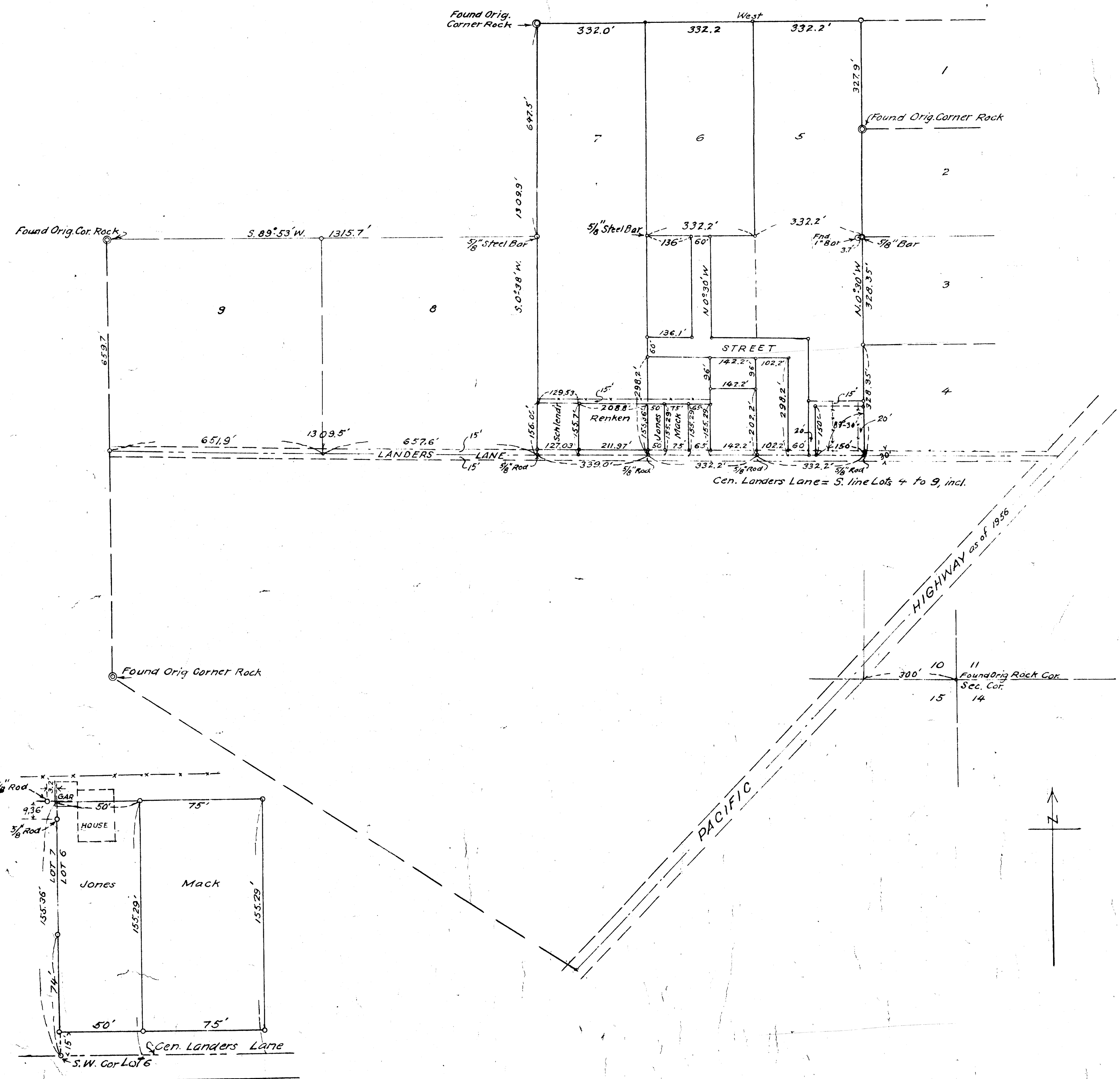


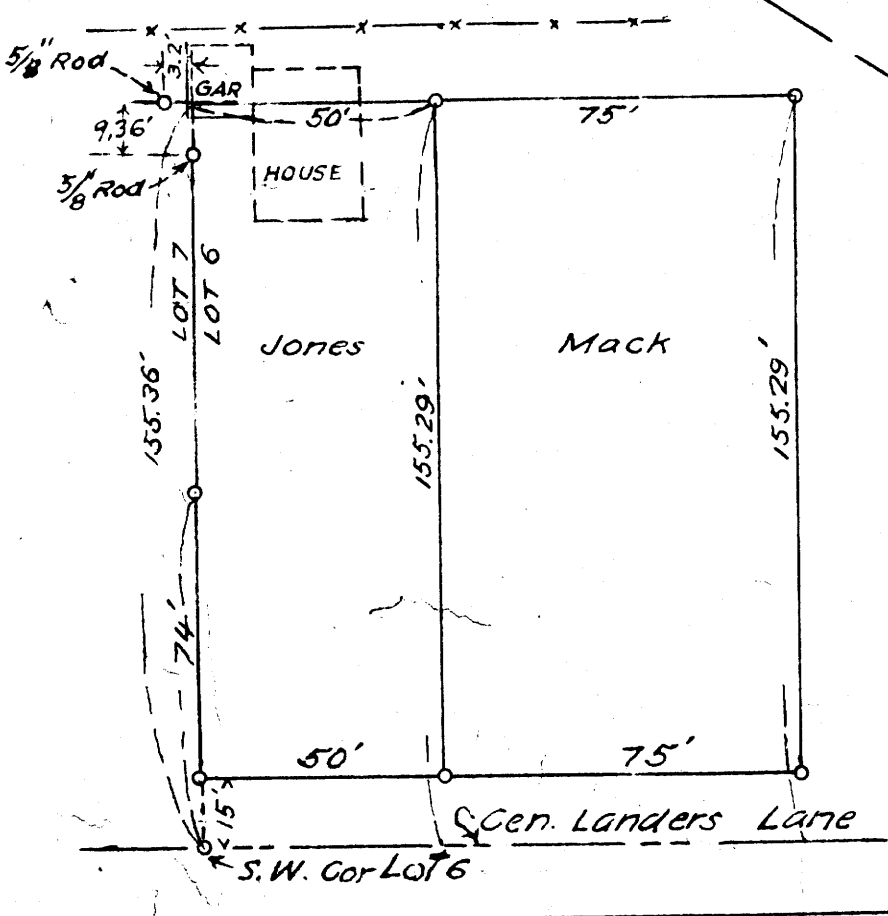
FILED  
RECEIVED  
JUN 1 1956  
COUNTY SURVEYOR  
DOUGLAS COUNTY, ORE.

DATE 1-5-89  
THIS COPY MADE FROM  
A XEROX 2510

MAP FILE 211-1-14

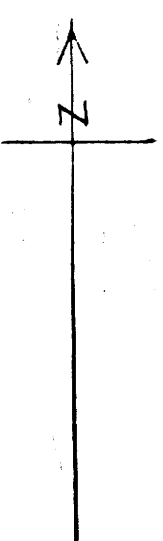


Cent. Landers Lane = S. line Lots 4 to 9, incl.



HIGHWAY as of 1956

PACIFIC



300' 10  
15 Found Orig. Rock Cor.  
Sec. Cor.  
14

FISK FRUIT FARMS  
PARCELS IN LOTS 5, 6 & 7, SAID SUBDIVSN;  
IN SEC. 10, T. 28S.; R. 6W.; WIL. MER.  
DOUGLAS COUNTY, ORE.  
MAY, 1956  
SCALE, 1"=200'

*Arthur [Signature]*