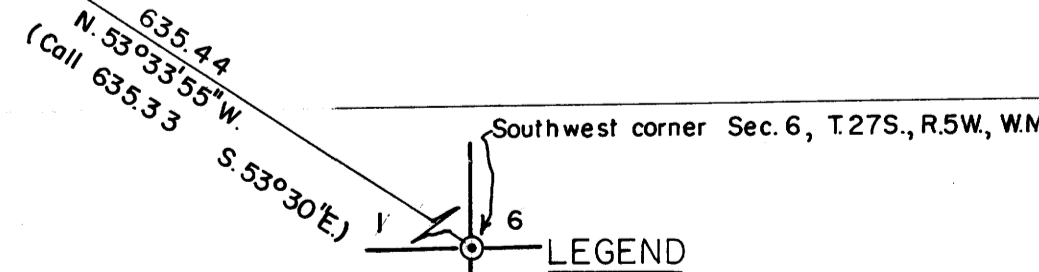


INITIAL POINT
NEWTON CREEK HOMESITES

INITIAL POINT
FIRST ADDITION TO NEWTON
CREEK HOMESITES



- LEGEND
- LOT LINES NOW IN USE
 - - - ORIGINAL LOT LINES
 - IRON PIN FOUND OR SET
 - - - PUBLIC UTILITY EASEMENT

RESURVEY OF
NEWTON CREEK HOMESITES
SEC. 6, T. 27S., R. 5W., W.M., DOUGLAS COUNTY, OREGON
SCALE: 1" = 50'
AUGUST 1954
FOLLETT & FORD EUGENE, OREGON

