

SECT 16, T.22 S., R. 4 W W. M.

Whipple Logging Co.

Drain Oregon

June 1975

Scale: 1" = 400'

FILED

SEP 13 1990

COUNTY SURVEYOR
DOUGLAS COUNTY, ORE.

Found T. iron +
Doug. County BRASS CAP
one orig B.T.

- Monuments as shown on map
- Dist. N 88° 51' W. from S 1/2 Sects. 15/16
- steel fence posts

DOCUMENT RECEIVED 1990
FROM HAINES ESTATE
9/90 JH

North ↑

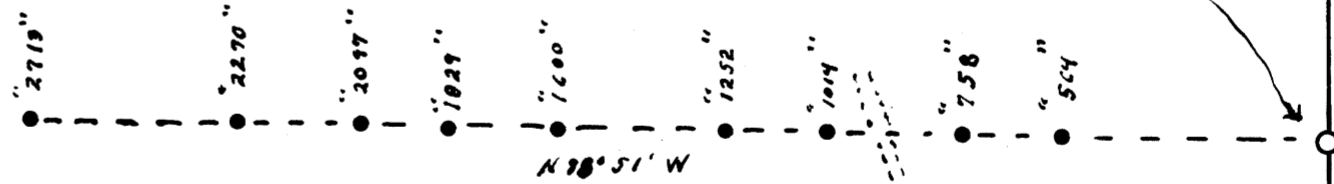
Not True
Based on
North for
line 16+17

REGISTERED
OREGON
LAND SURVEYOR
Wilford N. Haines
MAY 7, 1948
WILFORD N. HAINES
239

N 1/2 S 1/4 Set 3/8 rebar
Scribed
10" Doug. fir S 82° E 71.3'
8" W. Fir N 47° W. 10.3'

1/4 S 1/4 Found No trace of orig corner
Set 3/8 rebar
Scribed
6" Doug. fir N 57° W. 33.1'
8" W. Fir N 20° E. 29.0'

S 1/2 S 1/4 set 3/8 rebar
Scribed
20" D. Fir N 14 1/2° W. 27.2'
14" W. Fir S. 10 1/2° E. 27.5'

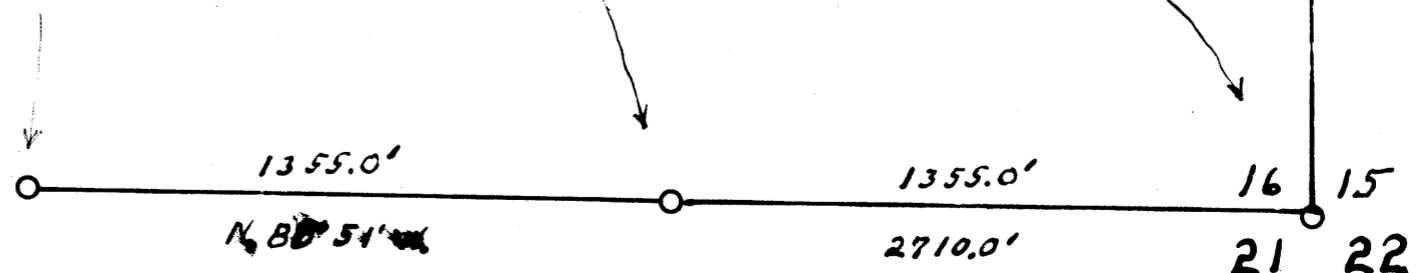


1/4 S 1/4

Found T iron in old road
B.T. Sect. 16 Now stump
B.T. Sect 21 Now about 48"

E 1/2 S 1/4 set 3/8 rebar
Scribed
12" Doug fir
S 57° E 17.0 ft

Found T. iron +
Weyerhaeuser post
S.E. B.T. still standing



F.B.H-111
H. EN. 7 T. 22-4

H. EN. 7