

L-02 L

LOGGING ROAD RIGHT OF WAY MAP

SECT. 35, T. 20 S. & R. 7 W. W.M. R.W. No. \_\_\_\_\_

Scale 1 inch 660 feet

June 23, 1955.

WOOLLEY LOGGING COMPANY

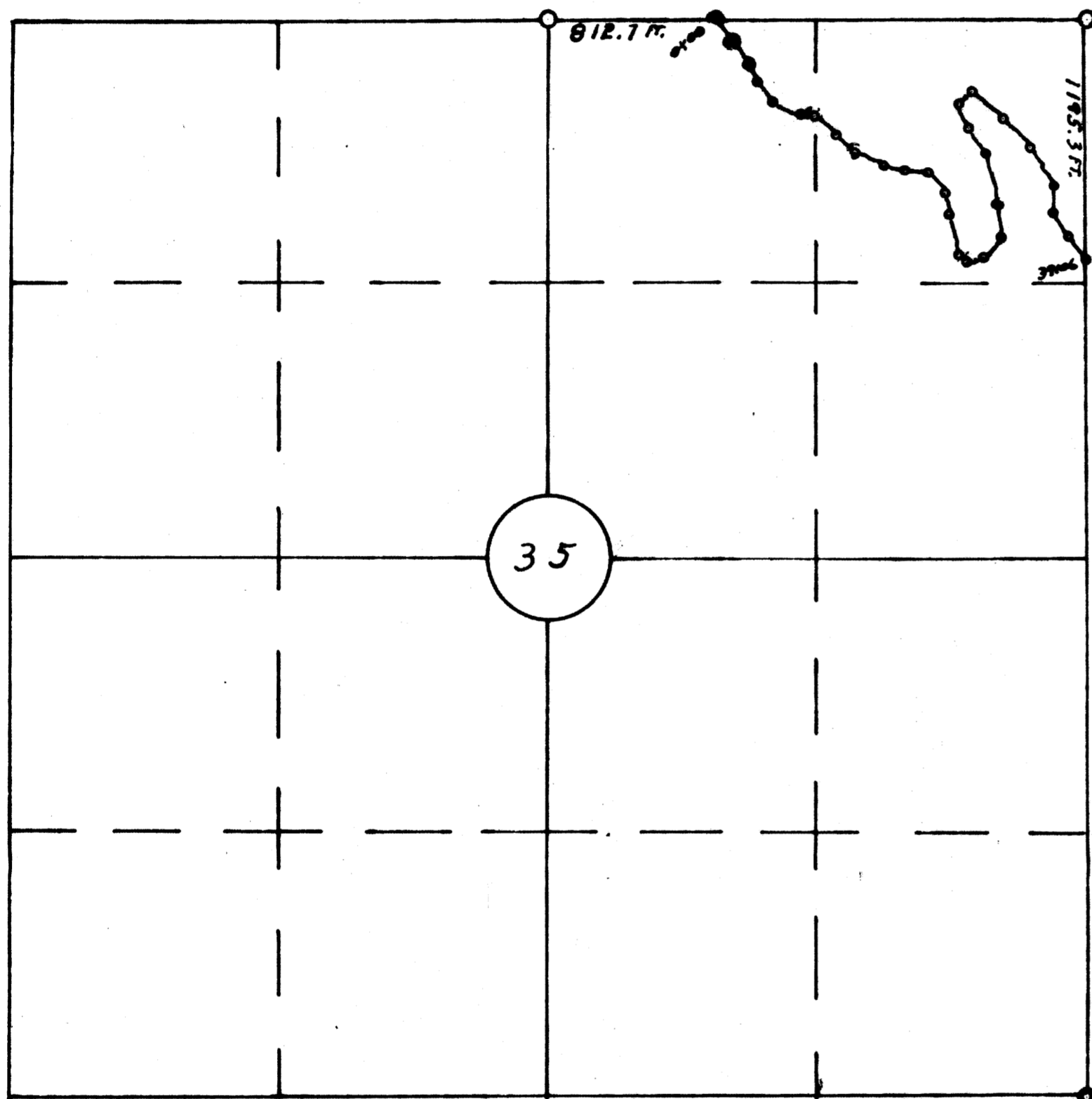
DRAIN, OREGON.

FILED

SEP 20 1990

COUNTY SURVEYOR  
DOUGLAS COUNTY, ORE.

DOCUMENT  
FROM HAINES  
ESTATE  
1990  
28



Width of R/W \_\_\_\_\_

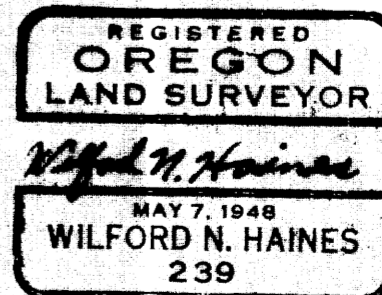
Beginning at sta. 0-00 a point on the  
line of sect. 35, 612.7 ft. east of  
north 1/4 cor.

- thence S. 51° E. 146 ft. to sta. 1-46
  - thence S. 31° E. 129 ft. to sta. 2-75
  - thence S. 32° E. 102 ft. to sta. 3-77
  - thence S. 37 1/2° E. 116 ft. to sta. 4-93
  - thence S. 65° E. 152 ft. to sta. 6-45
  - thence S. 77° E. 70 ft. to sta. 7-15
  - thence S. 44° E. 143 ft. to sta. 8-58
  - thence S. 45° E. 127 ft. to sta. 9-85
  - thence S. 71° E. 159 ft. to sta. 11-44
  - thence S. 76° E. 92 ft. to sta. 12-36
  - thence S. 84 1/2° E. 119 ft. to sta. 13-55
  - thence S. 43° E. 140 ft. to sta. 14-95
  - thence S. 09° E. 118 ft. to sta. 16-13
  - thence S. 14° E. 207 ft. to sta. 18-20
  - thence S. 46° E. 39 ft. to sta. 18-59
  - thence N. 80° E. 86 ft. to sta. 19-45
  - thence N. 32° E. 122 ft. to sta. 20-67
  - thence N. 04° W. 155 ft. to sta. 22-22
  - thence N. 09° W. 282 ft. to sta. 25-04
  - thence N. 34 1/2° W. 154 ft. to sta. 26-58
  - thence N. 21° W. 117 ft. to sta. 27-75
  - thence N. 50° E. 90 ft. to sta. 28-65
  - thence S. 48° E. 200 ft. to sta. 30-65
  - thence S. 44° E. 204 ft. to sta. 32-69
  - thence S. 23 1/2° E. 217 ft. to sta. 34-86
  - thence S. 08 1/2° E. 135 ft. to sta. 36-21
  - thence S. 31° E. 149 ft. to sta. 37-70
  - thence S. 42° E. 136 ft. to sta. 39-86.
- a point on the east line of sect. 35,  
1,195.3 ft. south of the N.E. Cor.

I, HAROLD WOOLLEY, do hereby certify that I am the President of The Woolley Logging Company; that Wilford N. Haines, who made the accompanying statement, is the Surveyor of said company; that the survey of the logging road, as accurately represented on this map, was made under authority of the company; that the company has corporate power to construct said logging road upon the location shown on this map; and that the map has been prepared to be filed as a part of the company's application in order that it may obtain a right-of-way across lands of the United States; and I further Certify that the right-of-way herein described is desired for the purpose of transporting forest products.

Harold Woolley, President

I, WILFORD N. HAINES, STATE THAT THE SURVEY OF ROAD RIGHT OF WAY, AS SHOWN ON THIS MAP, BEING A TOTAL LENGTH OVER LANDS OF THE UNITED STATES OF 1,195.3 FT., WAS MADE BY ME FOR THE WOOLLEY LOGGING COMPANY. WORK WAS COMMENCED ON THE 21st. DAY OF JUNE 1955 AND ENDED ON THE 23rd. DAY OF JUNE 1955.



H EN. 25