

THIS DOCUMENT  
FROM HAINES  
ESTATE - 1990  
VF

19 20  
30 29

STATE  
DEAD ROAD S. 47° 41' E.  
S. 47° 41' E.

#187

10.5

1090400 Vol. 93

Page 338

↑  
N 73

SECT. 29, T.22S., R.7W. W.M.

S.J. Anderson

EIKTON, ORE.

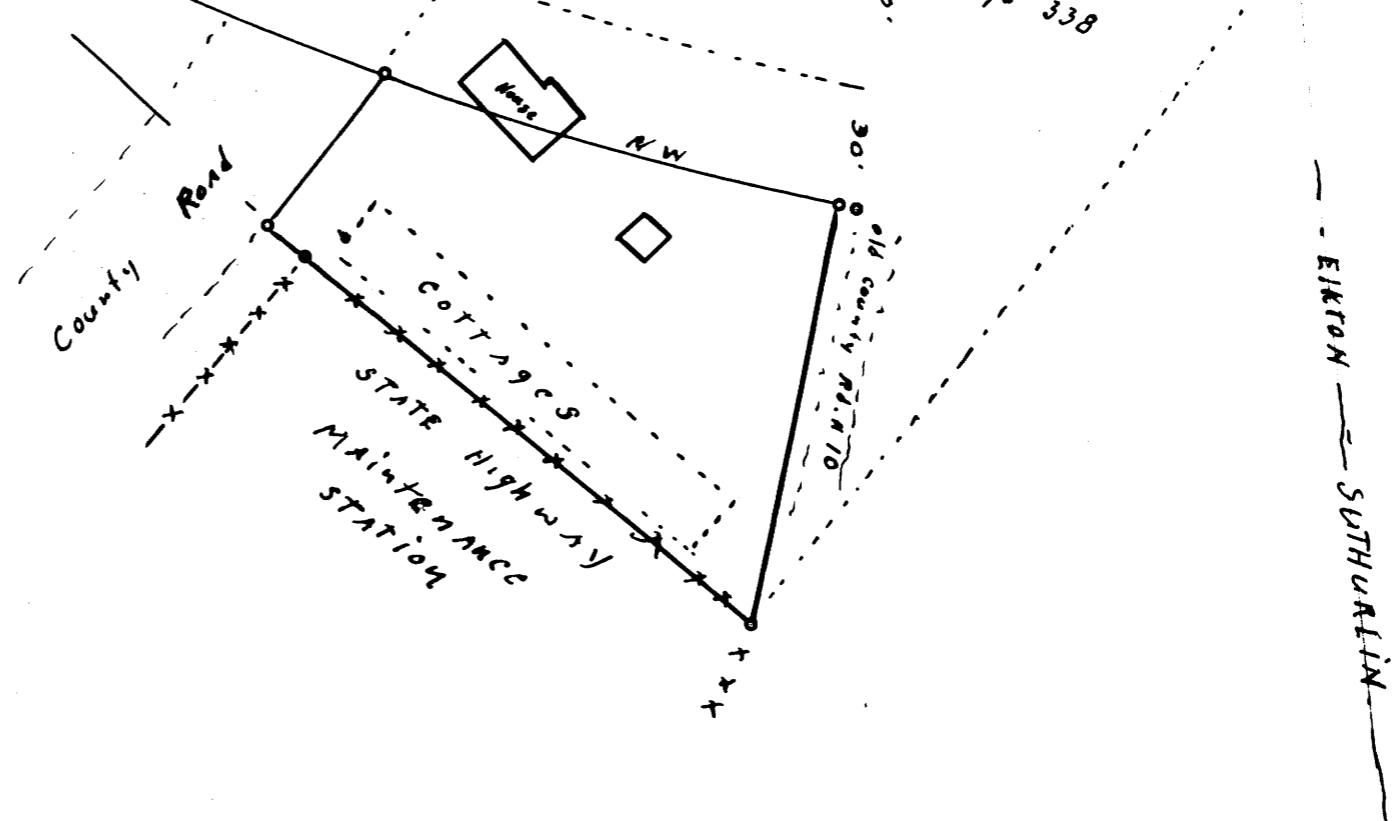
Scale: 1" = 50'

Jan 16, 1967

REGISTERED  
OREGON  
LAND SURVEYOR

W. N. Haines

MAY 7, 1948  
WILFORD N. HAINES  
239



H EN. 19