

SEC. 1 T.30S. R.2W. W.M.

Survey for Bureau of Land Management

Scale: 8" = Mile

July 1973

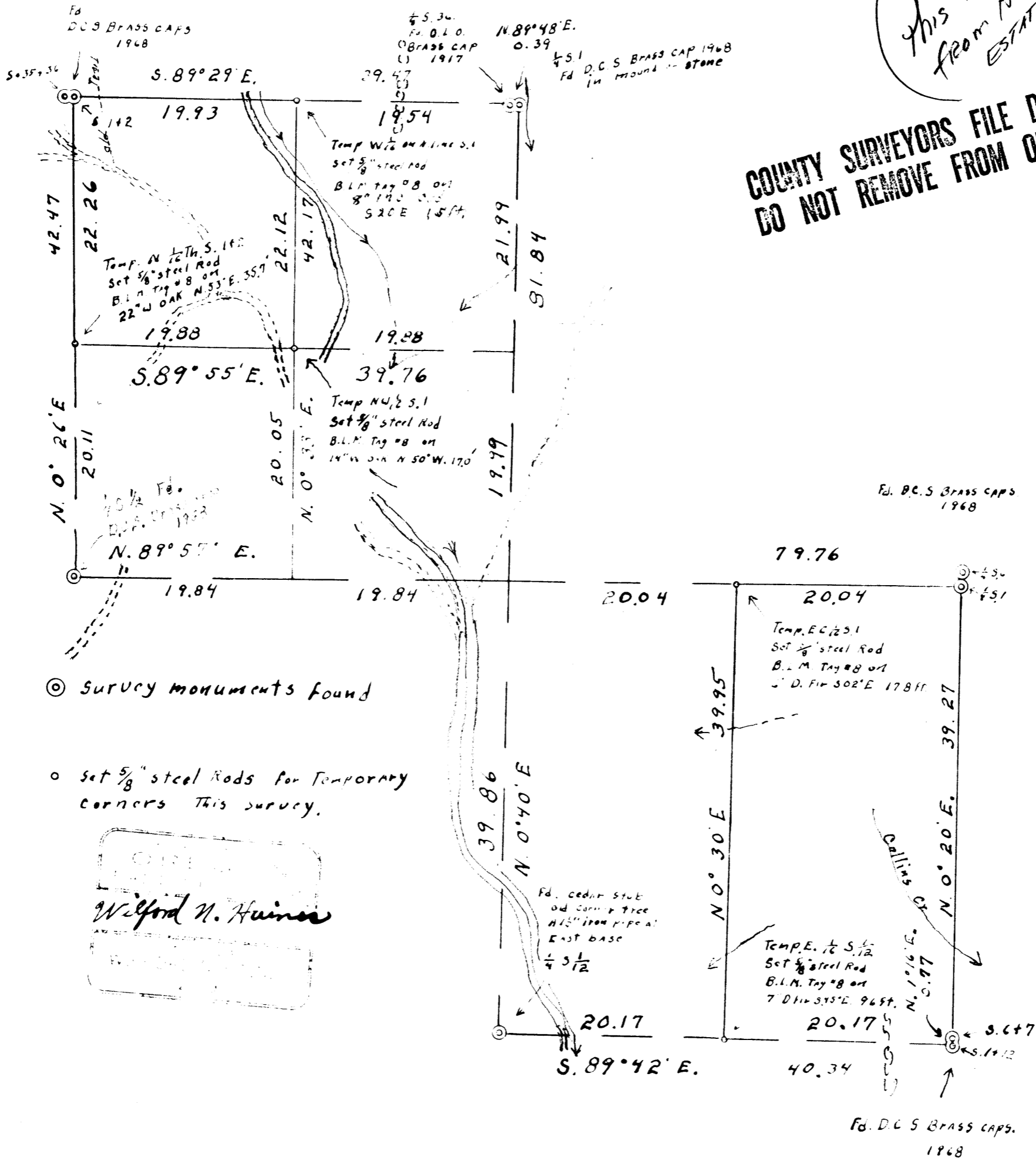
FILED *JL*

SEP 14 1990

COUNTY SURVEYOR DOUGLAS COUNTY, ORE.

This Document from HAINES ESTATE 1990 JL

COUNTY SURVEYORS FILE DATA DO NOT REMOVE FROM OFFICE



453
 39.95
 39.27
 20.04
 22.26
 19.93
 22.12
 19.58
 783.55 c/s

Henwi

