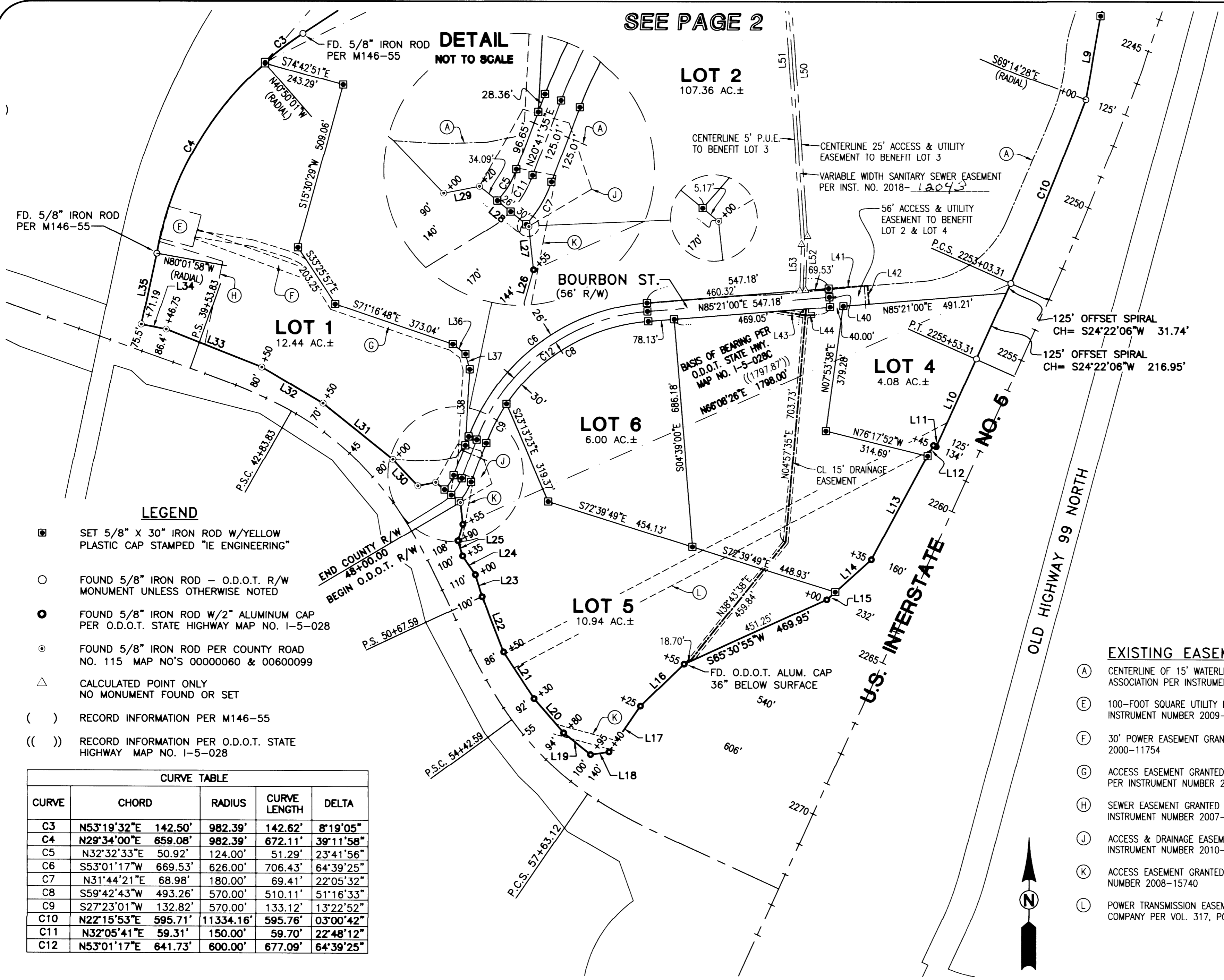


SEE PAGE 2



LINE TABLE	
LINE	COURSE
9	S10°21'26"W 250.38'
10	S24°35'16"W 290.10'
11	N65°38'38"W 9.06'
12	S28°22'15"W 36.78'
13	S28°22'15"W 354.10'
14	S48°10'49"W 145.72'
15	S48°10'49"W 34.31'
16	S45°48'16"W 182.34'
17	S34°31'27"W 166.98'
18	S81°37'20"W 56.08'
19	N51°18'17"W 103.44'
20	N40°53'45"W 135.32'
21	N33°11'09"W 167.71'
22	N21°26'25"W 178.68'
23	N16°47'03"W 68.98'
24	N34°22'44"W 67.51'
25	N17°14'56"W 47.71'
26	N15°59'08"E 51.96'
27	N06°10'13"W 65.74'
28	N50°45'50"W 95.41'
29	S79°01'07"W 54.79'
30	N43°46'58"W 109.27'
31	N51°12'00"W 269.07'
32	N59°31'13"W 213.54'
33	N68°28'56"W 308.23'
34	N78°42'15"W 76.20'
35	N12°09'42"E 217.94'
36	N52°37'50"W 47.97'
37	N15°19'54"W 47.97'
38	S03°19'04"W 228.87'
40	N04°39'00"W 56.00'
41	N85°21'00"E 117.18'
42	N04°39'00"W 56.00'
43	N81°13'35"W 82.66'
44	N88°24'52"E 27.74'
50	N03°52'39"W 1122.98'
51	N03°52'39"W 1116.20'
52	N02°13'46"E 138.11'
53	N02°13'46"E 139.55'

LEGEND

- SET 5/8" X 30" IRON ROD W/YELLOW PLASTIC CAP STAMPED "IE ENGINEERING"
- FOUND 5/8" IRON ROD - O.D.O.T. R/W MONUMENT UNLESS OTHERWISE NOTED
- FOUND 5/8" IRON ROD W/2" ALUMINUM CAP PER O.D.O.T. STATE HIGHWAY MAP NO. 1-5-028
- ⊙ FOUND 5/8" IRON ROD PER COUNTY ROAD NO. 115 MAP NO'S 00000060 & 00600099
- △ CALCULATED POINT ONLY NO MONUMENT FOUND OR SET
- () RECORD INFORMATION PER M146-55
- (()) RECORD INFORMATION PER O.D.O.T. STATE HIGHWAY MAP NO. 1-5-028

CURVE TABLE				
CURVE	CHORD	RADIUS	CURVE LENGTH	DELTA
C3	N53°19'32"E 142.50'	982.39'	142.62'	8°19'05"
C4	N29°34'00"E 659.08'	982.39'	672.11'	39°11'58"
C5	N32°32'33"E 50.92'	124.00'	51.29'	23°41'56"
C6	S53°01'17"W 669.53'	626.00'	706.43'	64°39'25"
C7	N31°44'21"E 68.98'	180.00'	69.41'	22°05'32"
C8	S59°42'43"W 493.26'	570.00'	510.11'	51°16'33"
C9	S27°23'01"W 132.82'	570.00'	133.12'	13°22'52"
C10	N22°15'53"E 595.71'	11334.16'	595.76'	03°00'42"
C11	N32°05'41"E 59.31'	150.00'	59.70'	22°48'12"
C12	N53°01'17"E 641.73'	600.00'	677.09'	64°39'25"

EXISTING EASEMENT NOTES

- (A) CENTERLINE OF 15' WATERLINE EASEMENT GRANTED TO UMPQUA BASIN WATER ASSOCIATION PER INSTRUMENT NUMBER 2018-007184
- (E) 100-FOOT SQUARE UTILITY EASEMENT GRANTED TO AMERICAN TOWER PER INSTRUMENT NUMBER 2009-20294
- (F) 30' POWER EASEMENT GRANTED TO PACIFICORP PER INSTRUMENT NUMBER 2000-11754
- (G) ACCESS EASEMENT GRANTED TO AMERICAN TOWER OVER EXISTING DRIVEWAY PER INSTRUMENT NUMBER 2009-20294
- (H) SEWER EASEMENT GRANTED TO DOUGLAS COUNTY FOREST PRODUCTS PER INSTRUMENT NUMBER 2007-7120
- (J) ACCESS & DRAINAGE EASEMENT GRANTED TO DOUGLAS COUNTY PER INSTRUMENT NUMBER 2010-20065
- (K) ACCESS EASEMENT GRANTED TO DOUGLAS COUNTY, INC. PER INSTRUMENT NUMBER 2008-15740
- (L) POWER TRANSMISSION EASEMENT GRANTED TO PACIFIC POWER AND LIGHT COMPANY PER VOL. 317, PG. 285.

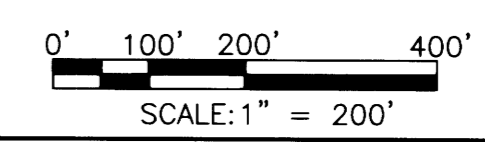


809 SE Pine Street
Roseburg, Oregon 97470
PHONE (541) 673-0166
FAX (541) 440-9392
iemail@ieengineering.com

SURVEYED FOR:
BACK NINE DEVELOPMENT, LLC
P.O. BOX 848
WINCHESTER, OR 97495

PAGE: 3 OF 4
JOB NO: 2378-02_T2
DATE: 07/17/2018

BACK NINE INDUSTRIAL PARK
LYING IN SECTION 24 AND IN THE SOUTHEAST QUARTER OF SECTION 13,
TOWNSHIP 26 SOUTH, RANGE 6 WEST, WILLAMETTE MERIDIAN, DOUGLAS COUNTY, OREGON



REGISTERED PROFESSIONAL LAND SURVEYOR

Ronald A. Gumbay
OREGON
JULY 14, 1978
RONALD A. GUMBAY
1954

EXPIRES: 12/31/18