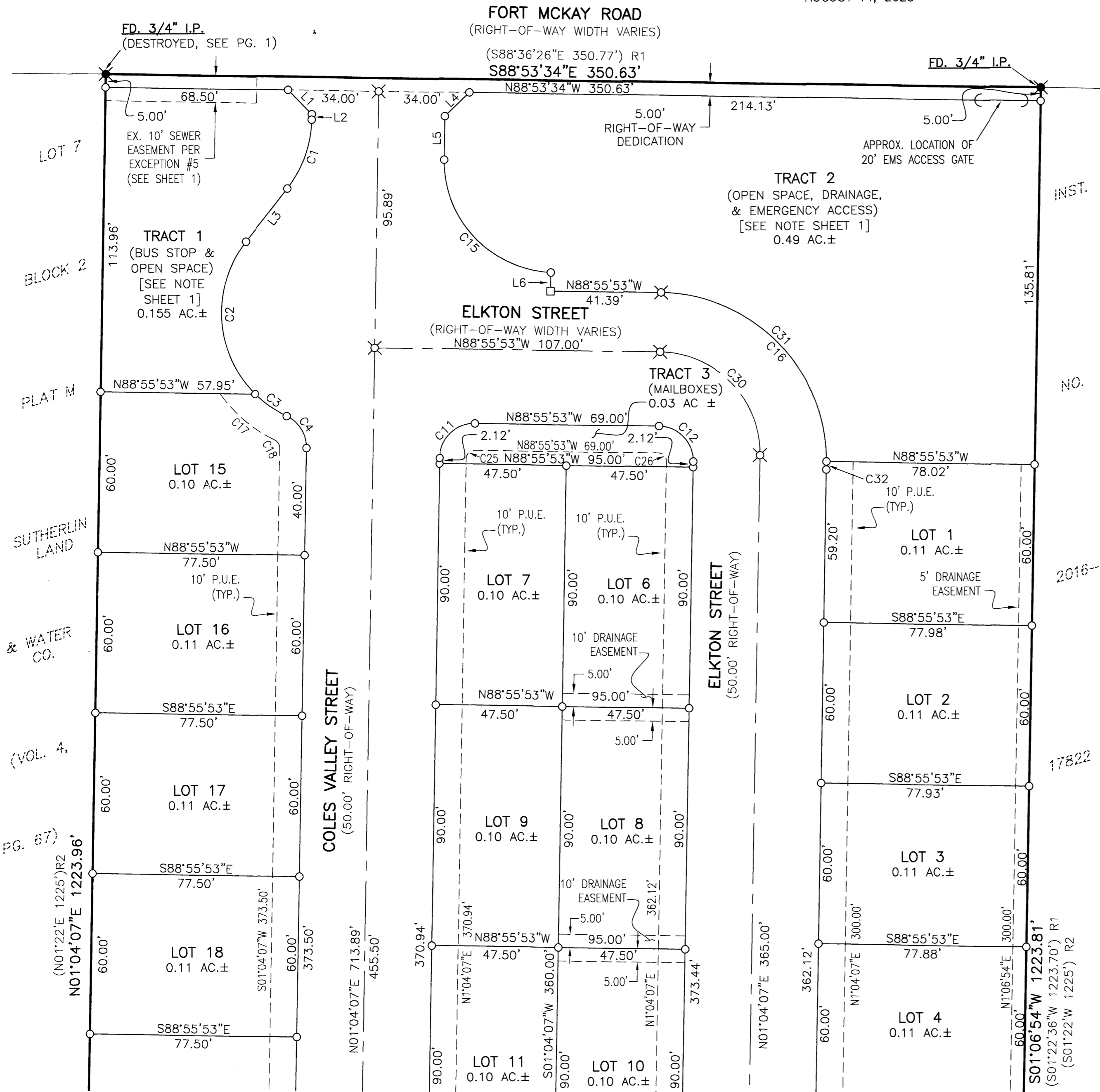


**FORT MCKAY P.U.D., PHASE 1**  
 LOCATED IN THE NORTHEAST QUARTER OF SECTION 24,  
 TOWNSHIP 25 SOUTH, RANGE 6 WEST, WILLAMETTE MERIDIAN,  
 DOUGLAS COUNTY, OREGON  
 AUGUST 14, 2023

**VOL. 24 PAGE 19 B**



LINE	COURSE
L1	S43°55'53"E 12.72'
L2	S01°04'07"W 2.04'
L3	S38°13'14"W 25.15'
L4	N46°04'07"E 12.73'
L5	N01°04'07"E 16.35'
L6	S01°04'07"W 6.91'

CURVE	CHORD	RADIUS	ARC LENGTH	DELTA
C1	N19°38'40"E 27.40'	43.00'	27.88'	37°09'07"
C2	S03°19'13"E 57.03'	43.00'	62.35'	83°05'11"
C3	S54°34'20"E 14.50'	43.00'	14.57'	19°25'03"
C4	N31°36'18"W 14.04'	13.00'	14.83'	65°20'50"
C5	N46°04'07"E 26.87'	19.00'	29.85'	90°00'00"
C6	N43°55'53"W 26.87'	19.00'	29.85'	90°00'00"
C7	S18°01'32"W 11.08'	19.00'	11.25'	33°54'50"
C8	S40°25'16"W 3.60'	19.00'	3.61'	10°52'39"
C9	N01°04'07"E 60.59'	43.00'	67.23'	89°35'02"
C10	S21°19'37"E 14.48'	19.00'	14.85'	44°47'29"
C11	S46°04'10"W 18.38'	13.00'	20.42'	89°59'54"
C12	N43°55'53"W 18.38'	13.00'	20.42'	90°00'00"
C15	S43°18'50"E 58.05'	41.50'	64.29'	88°45'27"
C16	N43°55'53"W 89.10'	63.00'	98.96'	90°00'21"
C17	S49°26'06"E 27.16'	53.00'	27.46'	29°41'31"
C18	N31°36'18"W 3.24'	3.00'	3.42'	65°20'50"
C19	N46°04'07"E 12.73'	9.00'	14.14'	90°00'00"
C20	N43°55'53"W 12.73'	9.00'	14.14'	90°00'00"
C21	S23°27'51"W 6.86'	9.00'	7.04'	44°47'29"
C22	N01°04'07"E 74.68'	53.00'	82.87'	89°34'58"
C24	S21°19'37"E 6.86'	9.00'	7.04'	44°47'29"
C25	S46°04'10"W 4.24'	3.00'	4.71'	89°59'54"
C26	N43°55'53"W 4.24'	3.00'	4.71'	90°00'00"
C28	S13°05'12"E 43.82'	43.00'	45.98'	61°16'21"
C30	N43°55'53"W 53.74'	38.00'	59.69'	90°00'00"
C31	N44°17'37"W 88.53'	63.00'	98.16'	89°16'30"
C32	N00°42'23"E 0.80'	63.00'	0.80'	00°43'29"
C33	N22°13'09"E 34.49'	43.00'	35.49'	47°17'14"
C34	N22°34'20"W 31.03'	43.00'	31.75'	42°18'01"

**LEGEND**

- ✖ - DENOTES FOUND IRON PIPE AS NOTED
- - DENOTES SET 5/8" X 30" IRON ROD WITH YELLOW PLASTIC CAP MARKED "I.E. ENGINEERING"
- ⊗ - DENOTES SET 5/8" X 30" IRON ROD WITH ALUMINUM CAP STAMPED "I.E. ENGINEERING"
- - DENOTES SET PK NAIL WITH WASHER STAMPED "I.E. ENGINEERING"
- P.U.E. - DENOTES PUBLIC UTILITY EASEMENT
- ( )R1 - DENOTES RECORD PER M65-61, SURVEY RECORDS OF DOUGLAS COUNTY
- ( )R2 - DENOTES RECORD PER PLAT M, SUTHERLIN LAND & WATER CO., VOLUME 4, PAGE 67 PLAT RECORDS OF DOUGLAS COUNTY



SCALE: 1" = 30'  
 SHEET 2 OF 3  
 JOB NO. 0859-41

**REGISTERED PROFESSIONAL LAND SURVEYOR**

*Brent H. Knapp*  
**OREGON**  
 NOVEMBER 10, 2010  
**BRENT H. KNAPP**  
 81116

EXPIRES: 6/30/2025

**i.e.**  
 ENGINEERING

CLIENT:  
 JERRY L TABOR BUILDING INC  
 376 FORT MCKAY RD  
 SUTHERLIN, OR 97479  
 809 SE Pine Street  
 Roseburg, Oregon 97470  
 PHONE (541) 673-0166  
 FAX (541) 440-9392  
 iemail@ieengineering.com

**VOL. 24 PAGE 19 B**