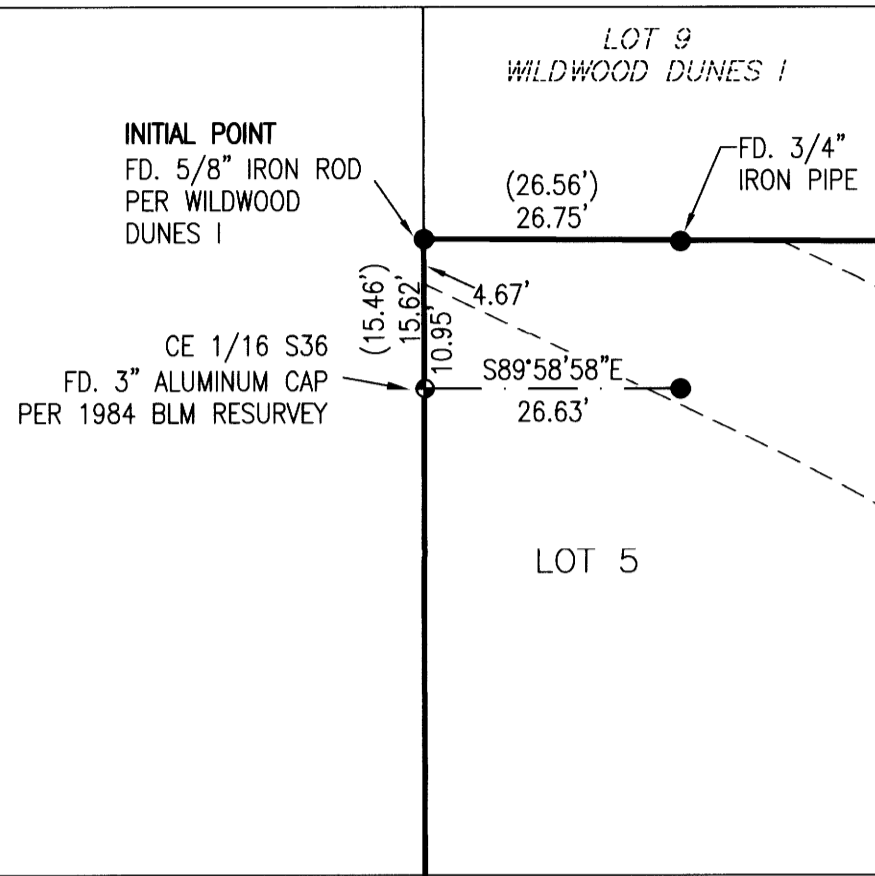


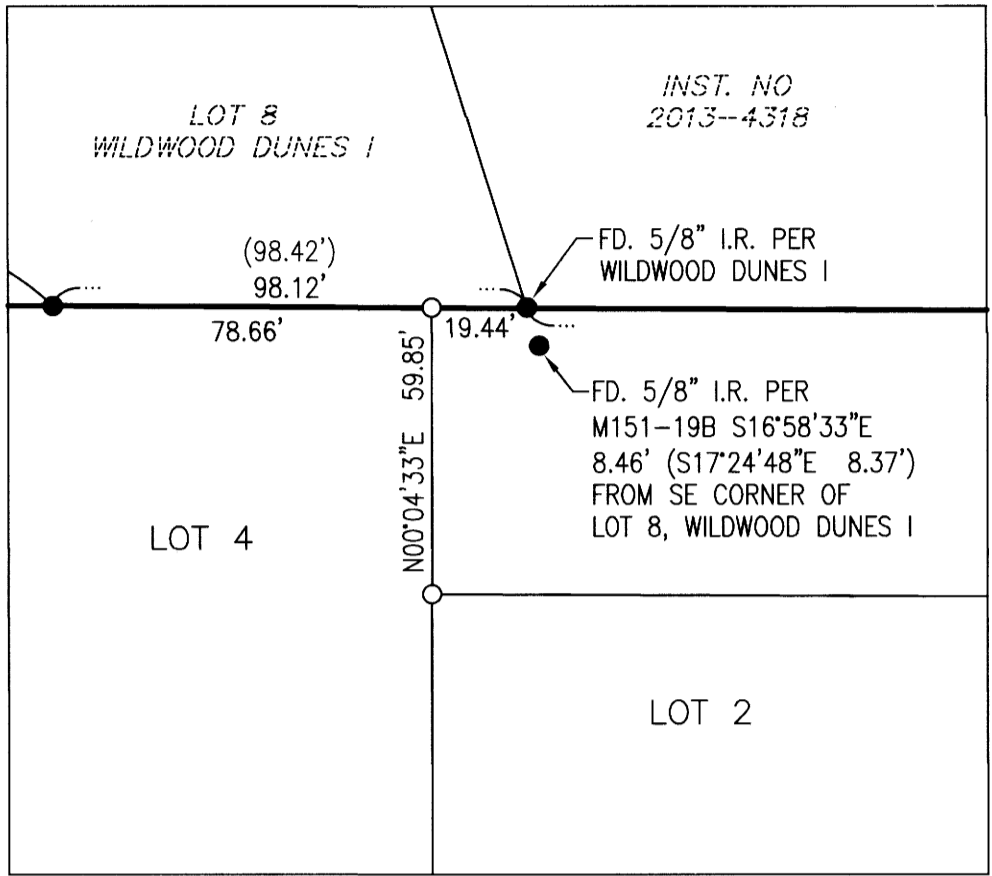
**WILDWOOD DUNES II**  
 LOCATED IN THE SOUTHEAST QUARTER OF SECTION 36, TOWNSHIP 22 SOUTH, RANGE  
 13 WEST, WILLAMETTE MERIDIAN, DOUGLAS COUNTY, OREGON

NOVEMBER 15, 2021

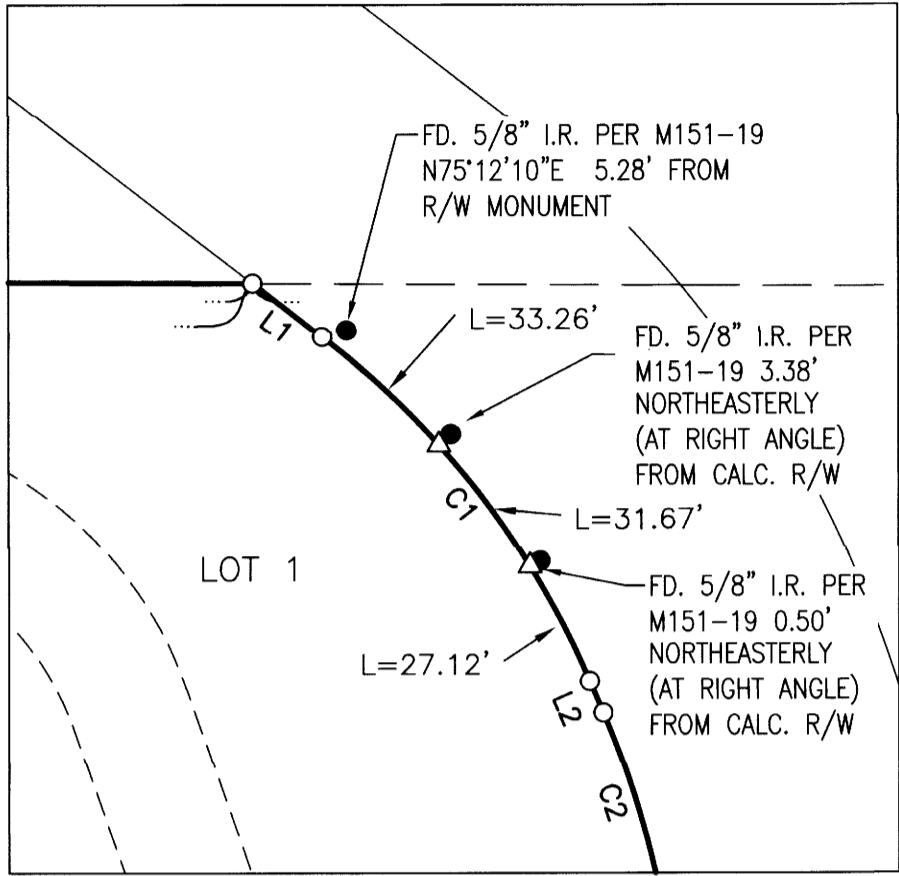
**DETAIL "A"**  
SCALE: 1" = 20'



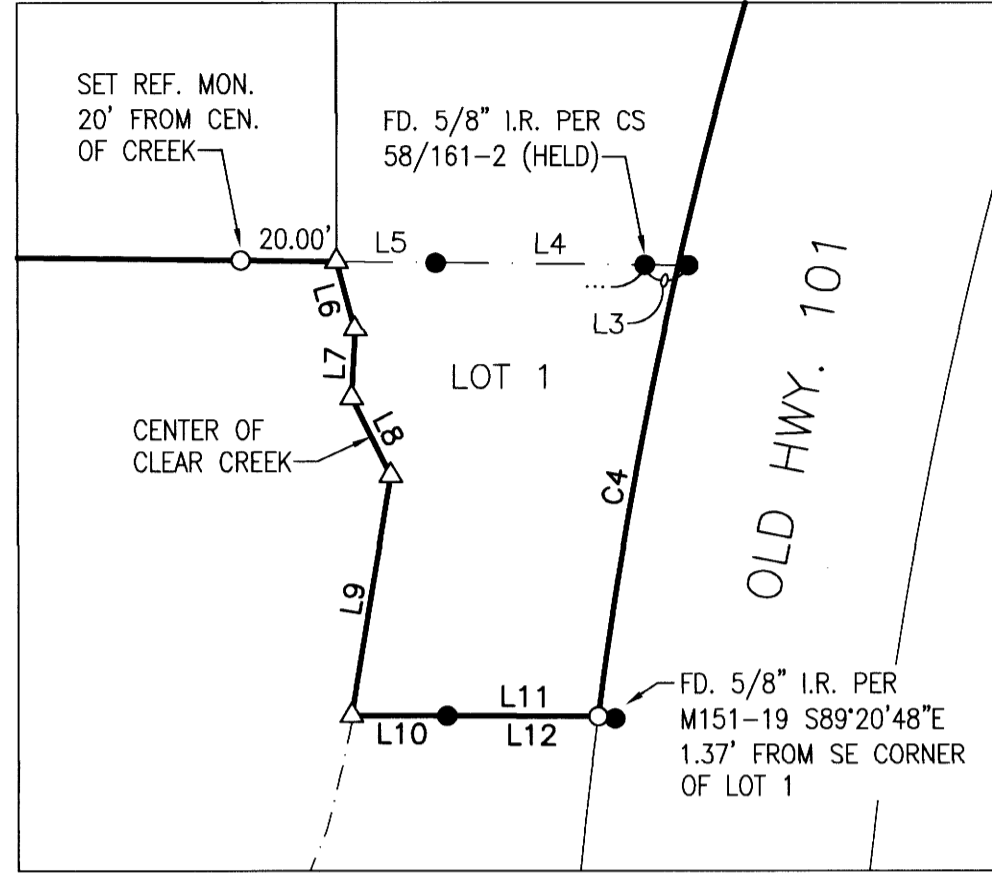
**DETAIL "B"**  
SCALE: 1" = 40'



**DETAIL "C"**  
SCALE: 1" = 40'

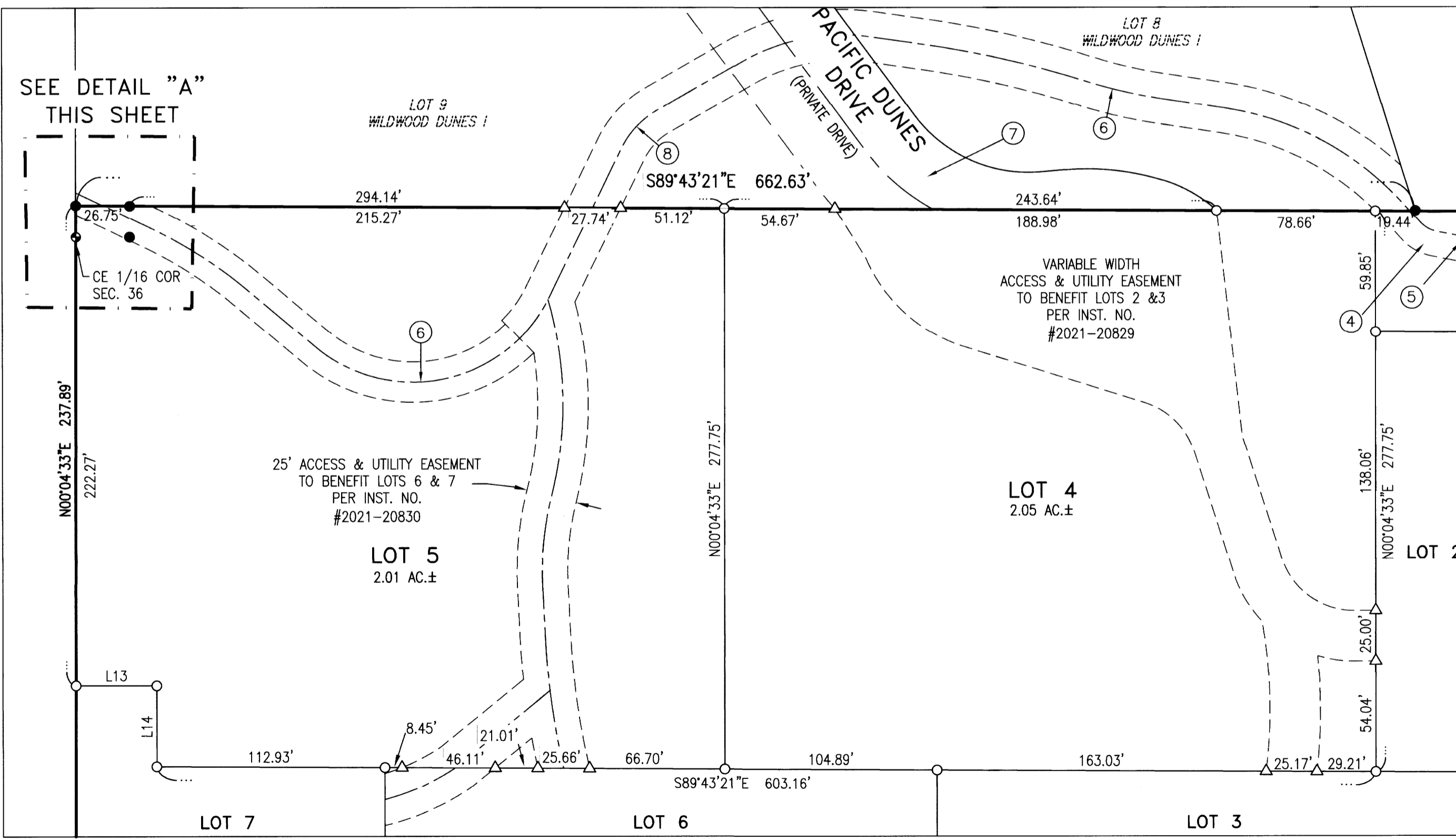


**DETAIL "D"**  
SCALE: 1" = 40'



**DETAIL "E"**  
SCALE: 1" = 50'

SEE SHEET 4 FOR EASEMENTS OF RECORD



LINE	COURSE
1	S52°24'30"E 18.23'
2	S23°06'30"E 7.13'
3	S89°20'49"E 9.01' (((N89°20'38"W 8.98')))
4	N89°20'49"W 4.369'
5	N89°20'49"W 20.65' (((N89°20'38"W 20.00')))
6	N15°06'05"W 14.60'
7	N03°05'30"E 14.44'
8	N26°46'48"W 18.12'
9	N09°17'03"E 50.80'

LINE	COURSE
10	N89°46'51"W 19.89' (((N89°45'53"W 20.00')))
11	N89°46'51"W 31.47' (((N89°45'53"W 32.87')))
12	N89°46'51"W 32.84' (((N89°45'53"W 32.87')))
13	S89°55'27"E 40.00'
14	S00°04'33"W 40.00'

CURVE	CHORD	RADIUS	CURVE LENGTH	DELTA
C1	S37°45'30"E 91.05'	180.00'	92.05'	29°18'00"
C2	S10°10'24"E 87.64'	195.75'	88.39'	25°52'13"
C3	S09°47'26"W 95.45'	390.00'	95.68'	14°03'26"
C4	S12°09'08"W 165.17'	1015.00'	165.35'	09°20'02"

**LEGEND**

- FD. 5/8" I.R. PER M151-19 OR AS NOTED
- FD. BRASS CAP AS NOTED
- SET 5/8" X 30" IRON ROD W/YELLOW PLASTIC CAP STAMPED "IE ENGINEERING"
- △ CALCULATED POINT
- ( ) RECORD INFORMATION PER WILDWOOD DUNES I (VOL. 23, PG. 47)
- (( ( ))) RECORD INFORMATION PER M151-19

**REGISTERED  
PROFESSIONAL  
LAND SURVEYOR**

OREGON  
NOVEMBER 10, 2010  
**BRENT H. KNAPP**  
81116

EXPIRES: 6/30/2023



SHEET 3 OF 4  
JOB NO. 2714-03

CLIENT:  
WILDWOOD DUNES I LTD.  
210 S. 5TH AVE  
COTTAGE GROVE, OR 97424  
809 SE Pine Street  
Roseburg, Oregon 97470  
PHONE (541) 673-0166  
FAX (541) 440-9392  
iemail@ieengineering.com

**i.e.**  
ENGINEERING