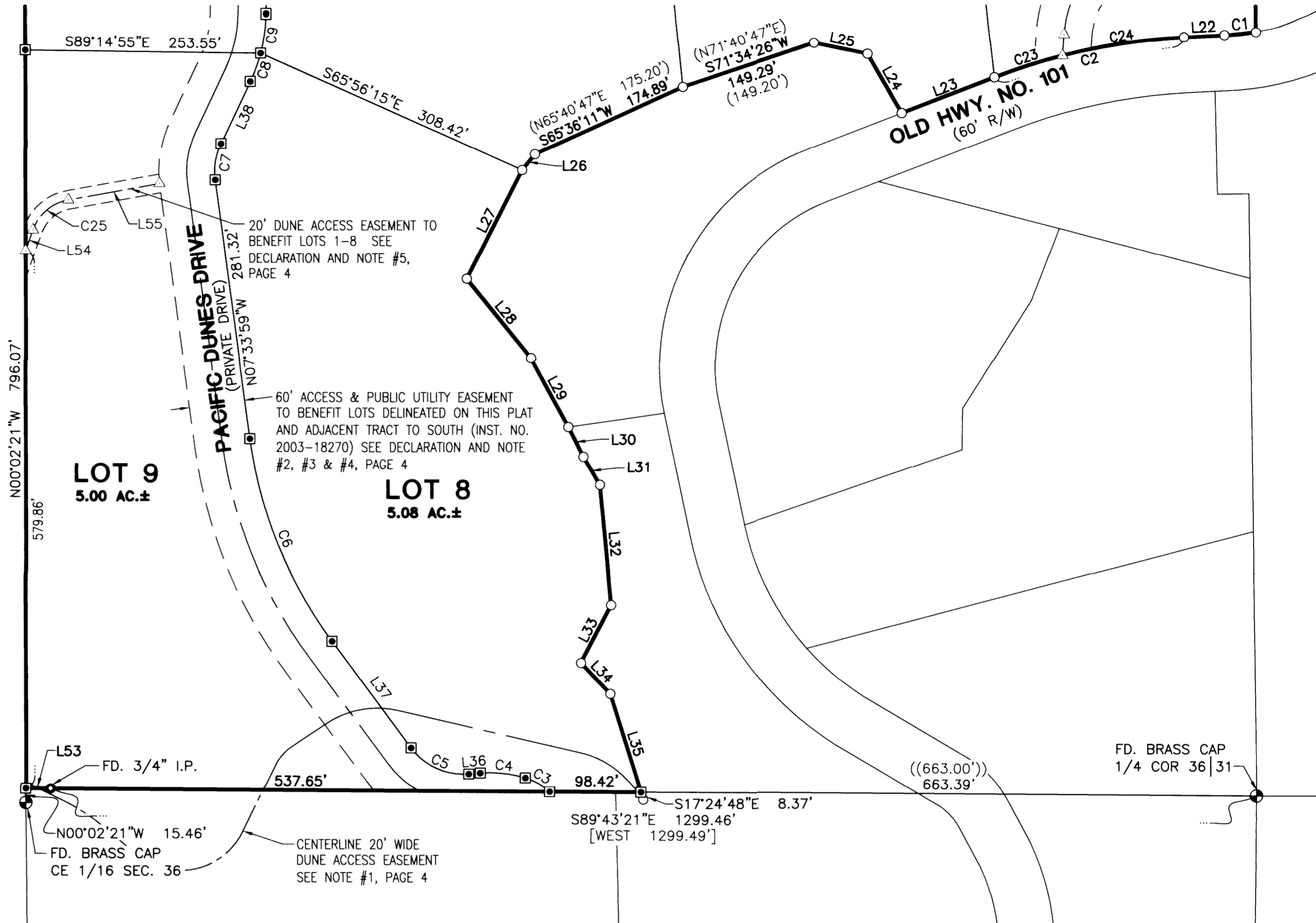


SEE PAGE 2

VOL. 23 PAGE 47 C

LINE	COURSE	LINE	COURSE
1	N04°42'02"E 10.95' (S04°12'05"W 10.97')	24	N29°54'10"W 73.63' (S29°49'13"E 73.65')
2	N02°44'53"E 52.43' (S02°50'04"W 52.48')	25	S78°22'49"E 58.78' (S78°19'13"E 58.80')
3	N14°01'33"E 38.23' (S14°02'04"W 37.87')	26	S38°46'06"W 21.99' (N39°10'47"E 22.00')
4	S88°41'45"E 16.24' (S89°34'18"W 15.49')	27	S27°06'09"W 131.72' (N26°55'47"E 132.00')
5	S14°58'49"W 40.24' (N14°02'04"E 40.27')	28	S39°01'50"E 109.98' (N38°49'13"W 110.00')
6	S02°39'37"W 51.16' (N02°50'04"E 51.19')	29	S28°32'33"E 84.36' (N28°04'13"W 84.24')
7	S04°31'08"W 46.48' (S04°12'05"W 46.45')	30	S26°51'58"E 35.96' (N28°04'13"W 35.76')
8	S21°38'59"W 32.72' (S21°32'14"W 32.73')	31	S30°14'47"E 35.10' (N30°34'13"W 35.20')
9	S09°04'22"W 20.97' (S08°57'05"W 20.94')	32	S05°25'27"E 130.20' (N05°19'13"W 130.20')
10	S29°31'39"E 27.00' (S29°30'56"E 26.98')	33	S27°57'49"W 70.18' (N27°55'47"E 70.00')
11	S62°47'15"E 69.60' (S62°46'56"E 69.60')	34	S43°36'08"E 46.28' (N43°19'13"W 45.90')
12	S53°47'03"E 70.92' (S53°45'46"E 70.90')	35	S17°24'48"E 110.98' (N17°32'13"W 119.77')
13	S65°33'00"E 57.13' (S65°35'56"E 57.16')	36	S85°15'17"W 12.50'
14	S45°32'26"E 57.95' (S45°27'16"E 57.95')	37	N36°35'33"W 142.76'
15	S30°46'20"E 18.59' (S30°47'45"E 18.61')	38	N25°19'45"E 73.97'
16	S26°14'34"E 25.73' (S26°18'55"E 25.73')	39	N01°36'07"E 61.72'
17	S21°39'11"E 97.93' (S21°37'56"E 97.91')	40	N46°52'11"E 21.28'
18	S87°49'38"E 53.80' (S87°50'56"E 53.78')	41	N04°57'30"W 13.98'
19	N83°41'48"E 61.56' (N83°44'14"E 61.57')	42	N57°53'49"E 32.11'
20	S29°50'41"E 88.02' (S29°49'56"E 88.02')	43	S61°37'42"E 86.80'
21	S89°06'04"E 13.18' (S89°44'56"E 13.18')	44	S76°38'23"E 60.35'
22	S87°02'35"W 43.81' (S87°01'51"W 43.87')	45	S36°14'01"E 72.20'
23	S68°54'44"W 107.10' (S69°00'39"W 107.16')	46	S53°45'59"W 60.00'
		47	S36°14'01"E 72.20'
		48	S09°33'13"E 69.25'
		49	N89°03'36"E 30.07'
		50	N89°03'36"E 67.59'
		51	N04°23'33"E 23.07'
		52	N40°38'38"E 32.11'
		53	S89°43'21"E 26.56'
		54	N19°36'21"E 23.55'
		55	N79°48'22"E 99.89'

LINE	COURSE	LINE	COURSE
24	N29°54'10"W 73.63' (S29°49'13"E 73.65')	25	S78°22'49"E 58.78' (S78°19'13"E 58.80')
25	S78°22'49"E 58.78' (S78°19'13"E 58.80')	26	S38°46'06"W 21.99' (N39°10'47"E 22.00')
26	S38°46'06"W 21.99' (N39°10'47"E 22.00')	27	S27°06'09"W 131.72' (N26°55'47"E 132.00')
27	S27°06'09"W 131.72' (N26°55'47"E 132.00')	28	S39°01'50"E 109.98' (N38°49'13"W 110.00')
28	S39°01'50"E 109.98' (N38°49'13"W 110.00')	29	S28°32'33"E 84.36' (N28°04'13"W 84.24')
29	S28°32'33"E 84.36' (N28°04'13"W 84.24')	30	S26°51'58"E 35.96' (N28°04'13"W 35.76')
30	S26°51'58"E 35.96' (N28°04'13"W 35.76')	31	S30°14'47"E 35.10' (N30°34'13"W 35.20')
31	S30°14'47"E 35.10' (N30°34'13"W 35.20')	32	S05°25'27"E 130.20' (N05°19'13"W 130.20')
32	S05°25'27"E 130.20' (N05°19'13"W 130.20')	33	S27°57'49"W 70.18' (N27°55'47"E 70.00')
33	S27°57'49"W 70.18' (N27°55'47"E 70.00')	34	S43°36'08"E 46.28' (N43°19'13"W 45.90')
34	S43°36'08"E 46.28' (N43°19'13"W 45.90')	35	S17°24'48"E 110.98' (N17°32'13"W 119.77')
35	S17°24'48"E 110.98' (N17°32'13"W 119.77')	36	S85°15'17"W 12.50'
36	S85°15'17"W 12.50'	37	N36°35'33"W 142.76'
37	N36°35'33"W 142.76'	38	N25°19'45"E 73.97'
38	N25°19'45"E 73.97'	39	N01°36'07"E 61.72'
39	N01°36'07"E 61.72'	40	N46°52'11"E 21.28'
40	N46°52'11"E 21.28'	41	N04°57'30"W 13.98'
41	N04°57'30"W 13.98'	42	N57°53'49"E 32.11'
42	N57°53'49"E 32.11'	43	S61°37'42"E 86.80'
43	S61°37'42"E 86.80'	44	S76°38'23"E 60.35'
44	S76°38'23"E 60.35'	45	S36°14'01"E 72.20'
45	S36°14'01"E 72.20'	46	S53°45'59"W 60.00'
46	S53°45'59"W 60.00'	47	S36°14'01"E 72.20'
47	S36°14'01"E 72.20'	48	S09°33'13"E 69.25'
48	S09°33'13"E 69.25'	49	N89°03'36"E 30.07'
49	N89°03'36"E 30.07'	50	N89°03'36"E 67.59'
50	N89°03'36"E 67.59'	51	N04°23'33"E 23.07'
51	N04°23'33"E 23.07'	52	N40°38'38"E 32.11'
52	N40°38'38"E 32.11'	53	S89°43'21"E 26.56'
53	S89°43'21"E 26.56'	54	N19°36'21"E 23.55'
54	N19°36'21"E 23.55'	55	N79°48'22"E 99.89'
55	N79°48'22"E 99.89'		



CURVE	CHORD BEARING	CHORD LENGTH	RADIUS	CURVE LENGTH	DELTA
C1	S84°06'23"W (N83°52'20"E)	34.10' (34.16')	310.00' (310.00')	34.11' (34.18')	6°18'17" (6°19'01")
C2	S77°58'40"W (N78°01'14"E)	209.08' (208.90')	667.00' (667.00')	209.94' (209.77')	18°02'04" (18°01'09")
C3	N60°32'52"W	30.36'	70.00'	30.60'	25°02'48"
C4	N83°54'29"W	48.88'	130.00'	49.18'	21°40'27"
C5	N65°40'08"W	68.04'	70.00'	71.05'	58°09'10"
C6	N22°04'46"W	235.56'	470.00'	238.10'	29°01'34"
C7	N08°52'53"E	39.64'	70.00'	40.19'	32°53'44"
C8	N20°08'31"E	32.55'	180.00'	32.59'	10°22'28"
C9	N08°16'42"E	41.85'	180.00'	41.95'	13°21'10"
C10	N24°14'09"E	92.36'	120.00'	94.81'	45°16'04"
C11	N20°57'20"E	157.33'	180.00'	162.82'	51°49'42"
C12	N18°30'44"E	95.59'	120.00'	98.31'	46°56'29"

CURVE	CHORD BEARING	CHORD LENGTH	RADIUS	CURVE LENGTH	DELTA
C13	N49°56'24"E	33.22'	120.00'	33.33'	15°54'50"
C14	N51°06'45"E	54.34'	230.00'	54.47'	13°34'07"
C15	N52°23'56"E	33.70'	120.00'	33.81'	16°08'30"
C16	N89°25'15"E	116.17'	120.00'	121.27'	57°54'07"
C17	S71°49'26"E	28.54'	170.00'	28.58'	09°37'55"
C18	S56°26'12"E	131.23'	190.00'	133.99'	40°24'22"
C19	S22°53'37"E	32.30'	70.00'	32.60'	26°40'48"
C20	S07°15'35"E	28.03'	370.00'	28.04'	04°20'33"
C21	N22°31'06"E	62.22'	100.00'	63.27'	36°15'05"
C22	N17°51'55"E	309.57'	400.00'	350.45'	50°11'51"
C23	N72°16'39"E	77.19'	667.00'	77.23'	06°38'03"
C24	N81°17'41"E	132.49'	667.00'	132.71'	11°24'01"
C25	N49°42'21"E	50.15'	50.00'	52.53'	60°12'01"
C26	S63°57'06"E	18.65'	230.00'	18.65'	4°38'49"

- LEGEND:**
- () RECORD PER M151-19 DOUGLAS COUNTY SURVEY RECORDS
 - (()) RECORD PER CS 55/4-4 DOUGLAS COUNTY SURVEY RECORDS
 - [] RECORD PER CS 51/256-4 DOUGLAS COUNTY SURVEY RECORDS
 - [[]] RECORD PER INST. NO. 2003-18270 DOUGLAS COUNTY DEED RECORDS
 - { } RECORD PER M53-38 DOUGLAS COUNTY SURVEY RECORDS
 - SET 5/8" x 30" IRON ROD w/CAP MARKED "I.E. ENGINEERING" UNLESS OTHERWISE NOTED
 - FOUND 5/8" IRON ROD PER M151-19 UNLESS NOTED OTHERWISE
 - ⊕ FOUND BRASS CAP AS NOTED
 - FOUND IRON OR ALUMINUM PIPE AS NOTED
 - △ CALCULATED POSITION ONLY NO MONUMENT FOUND OR SET

N

REGISTERED
PROFESSIONAL
LAND SURVEYOR

Ronald A. Gumbly
OREGON
JULY 14, 1978
RONALD A. GUMBLY
1864

EXPIRES: 12/31/18

0' 50' 100' 200'
SCALE: 1" = 100'

i.e.
ENGINEERING

809 SE Pine Street
Roseburg, Oregon 97470
PHONE (541) 673-0166
FAX (541) 440-9392
iemail@ieengineering.com

SURVEYED FOR:
WILDWOOD DUNES I LTD.
210 S. 5TH AVE.
COTTAGE GROVE, OR 97424

PAGE: 3 OF 4
JOB NO: 2714-02
DATE: 1-22-18

WILDWOOD DUNES I

LYING IN THE NORTHEAST QUARTER OF SECTION 36, TOWNSHIP 22 SOUTH,
RANGE 13 WEST, WILLAMETTE MERIDIAN, DOUGLAS COUNTY, OREGON

VOL. 23 PAGE 47 C