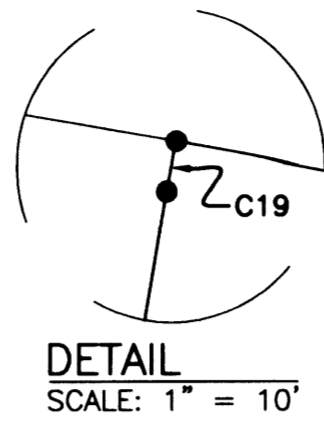


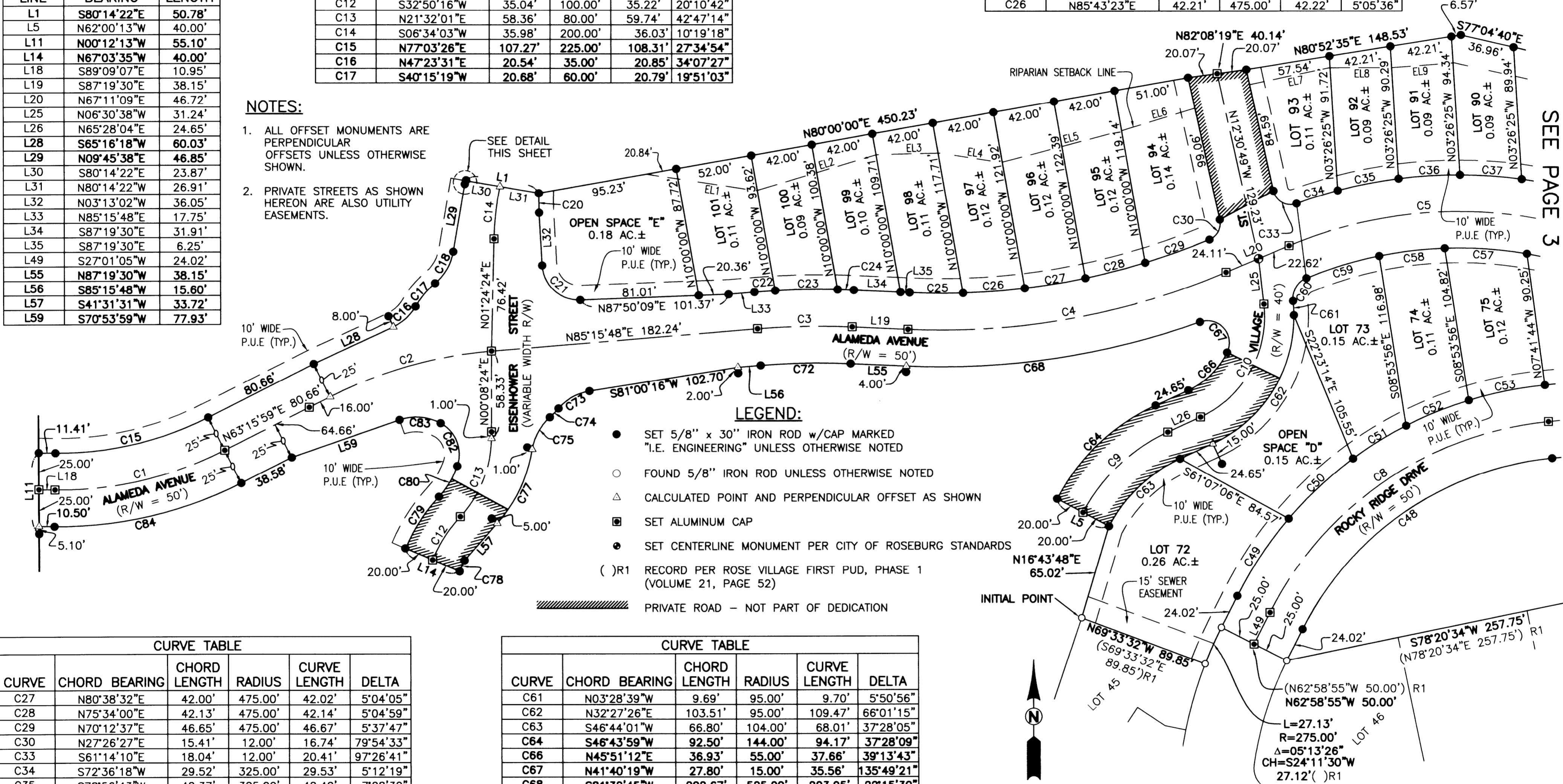
CURVE TABLE					
CURVE	CHORD BEARING	CHORD LENGTH	RADIUS	CURVE LENGTH	DELTA
C1	N77°03'26"E	119.19'	250.00'	120.35'	27°34'55"
C2	S74°15'53"W	114.47'	300.00'	115.18'	21°59'50"
C3	S88°58'09"W	64.63'	500.00'	64.68'	7°24'42"
C4	N79°55'50"E	220.60'	500.00'	222.43'	25°29'21"
C5	S85°29'04"W	188.38'	300.00'	191.62'	36°35'50"
C8	S55°44'53"W	230.73'	240.00'	240.69'	57°27'35"
C9	S46°44'00"W	79.65'	124.00'	81.09'	37°28'07"
C10	N29°28'43"E	88.14'	75.00'	94.22'	71°58'42"
C12	S32°50'16"W	35.04'	100.00'	35.22'	20°10'42"
C13	N21°32'01"E	58.36'	80.00'	59.74'	42°47'14"
C14	S06°34'03"W	35.98'	200.00'	36.03'	10°19'18"
C15	N77°03'26"E	107.27'	225.00'	108.31'	27°34'54"
C16	N47°23'31"E	20.54'	35.00'	20.85'	34°07'27"
C17	S40°15'19"W	20.68'	60.00'	20.79'	19°51'03"



CURVE TABLE					
CURVE	CHORD BEARING	CHORD LENGTH	RADIUS	CURVE LENGTH	DELTA
C18	N29°58'14"E	24.87'	36.00'	25.40'	40°25'13"
C19	N12°15'21"E	2.44'	28.00'	2.44'	4°59'27"
C20	S00°33'11"E	13.34'	256.16'	13.34'	2°59'00"
C21	S47°41'27"E	35.03'	25.00'	38.81'	88°56'49"
C22	S86°02'26"W	14.24'	525.00'	14.24'	1°33'16"
C23	S89°08'23"W	42.54'	525.00'	42.55'	4°38'38"
C24	N87°55'54"W	11.12'	525.00'	11.12'	1°12'48"
C25	S89°31'40"E	36.51'	475.00'	36.52'	4°24'19"
C26	N85°43'23"E	42.21'	475.00'	42.22'	5°05'36"

LINE TABLE		
LINE	BEARING	LENGTH
L1	S80°14'22"E	50.78'
L5	N62°00'13"W	40.00'
L11	N00°12'13"W	55.10'
L14	N67°03'35"W	40.00'
L18	S89°09'07"E	10.95'
L19	S87°19'30"E	38.15'
L20	N67°11'09"E	46.72'
L25	N06°30'38"W	31.24'
L26	N65°28'04"E	24.65'
L28	S65°16'18"W	60.03'
L29	N09°45'38"E	46.85'
L30	S80°14'22"E	23.87'
L31	N80°14'22"W	26.91'
L32	N03°13'02"W	36.05'
L33	N85°15'48"E	17.75'
L34	S87°19'30"E	31.91'
L35	S87°19'30"E	6.25'
L49	S27°01'05"W	24.02'
L55	N87°19'30"W	38.15'
L56	S85°15'48"W	15.60'
L57	S41°31'31"W	33.72'
L59	S70°53'59"W	77.93'

- NOTES:**
- ALL OFFSET MONUMENTS ARE PERPENDICULAR OFFSETS UNLESS OTHERWISE SHOWN.
 - PRIVATE STREETS AS SHOWN HEREON ARE ALSO UTILITY EASEMENTS.



CURVE TABLE					
CURVE	CHORD BEARING	CHORD LENGTH	RADIUS	CURVE LENGTH	DELTA
C27	N80°38'32"E	42.00'	475.00'	42.02'	5°04'05"
C28	N75°34'00"E	42.13'	475.00'	42.14'	5°04'59"
C29	N70°12'37"E	46.65'	475.00'	46.67'	5°37'47"
C30	N27°26'27"E	15.41'	12.00'	16.74'	79°54'33"
C33	S61°14'10"E	18.04'	12.00'	20.41'	97°26'41"
C34	S72°36'18"W	29.52'	325.00'	29.53'	5°12'19"
C35	S78°56'43"W	42.37'	325.00'	42.40'	7°28'32"
C36	S86°23'16"W	42.00'	325.00'	42.03'	7°24'34"
C37	N86°10'21"W	42.34'	325.00'	42.37'	7°28'11"
C48	S55°44'53"W	206.69'	215.00'	215.62'	57°27'35"
C49	S33°51'46"W	63.16'	265.00'	63.31'	13°41'21"
C50	S47°13'11"W	60.11'	265.00'	60.24'	13°01'30"
C51	S58°20'52"W	42.65'	265.00'	42.69'	9°13'51"
C52	S67°57'54"W	46.21'	265.00'	46.27'	10°00'13"
C53	S78°43'20"W	53.15'	265.00'	53.24'	11°30'40"
C57	N86°12'20"W	56.38'	275.00'	56.48'	11°46'01"
C58	S83°12'53"W	45.03'	275.00'	45.08'	9°23'33"
C59	S73°05'20"W	52.04'	275.00'	52.12'	10°51'32"
C60	S30°37'43"W	18.07'	15.00'	19.39'	74°03'41"

CURVE TABLE					
CURVE	CHORD BEARING	CHORD LENGTH	RADIUS	CURVE LENGTH	DELTA
C61	N03°28'39"W	9.69'	95.00'	9.70'	5°50'56"
C62	N32°27'26"E	103.51'	95.00'	109.47'	66°01'15"
C63	S46°44'01"W	66.80'	104.00'	68.01'	37°28'05"
C64	S46°43'59"W	92.50'	144.00'	94.17'	37°28'09"
C66	N45°51'12"E	36.93'	55.00'	37.66'	39°13'43"
C67	N41°40'19"W	27.80'	15.00'	35.56'	135°49'21"
C68	S81°32'45"W	202.67'	525.00'	203.95'	22°15'30"
C72	S88°58'09"W	61.40'	475.00'	61.44'	7°24'42"
C73	S60°47'09"W	24.19'	35.00'	24.70'	40°26'15"
C74	S44°35'38"W	8.43'	60.00'	8.43'	8°03'13"
C75	S28°58'43"W	24.87'	37.00'	25.37'	39°17'02"
C77	N25°32'02"E	55.79'	100.00'	56.54'	32°23'40"
C78	S24°03'30"W	8.21'	80.00'	8.21'	5°52'52"
C79	N32°51'13"E	41.98'	120.00'	42.20'	20°08'50"
C80	N31°14'26"E	24.31'	60.00'	24.48'	23°22'24"
C82	N21°05'10"W	31.26'	24.00'	34.05'	81°16'48"
C83	N85°24'47"W	28.12'	35.00'	28.94'	47°22'27"
C84	S77°03'26"W	131.11'	275.00'	132.38'	27°34'54"

REGISTERED PROFESSIONAL LAND SURVEYOR

Ronald A. Gumbly

OREGON
JULY 14, 1978
RONALD A. GUMBLY
1954

EXPIRES: 12/31/2010

ROSE VILLAGE FIRST P.U.D., PHASE 1A

LYING IN THE SE 1/4 OF SEC. 7, T. 27 S., R. 5 W., WILLAMETTE MERIDIAN, DOUGLAS COUNTY, OREGON

SURVEYED FOR:
ROSE VILLAGE, LLC
200 LITTLEBROOK LN
ROSEBURG, OR 97470

SURVEYED BY:
i.e.
ENGINEERING
809 SE Pine Street
Roseburg, Oregon 97470
PHONE (541) 673-0166
FAX (541) 440-9392
email@ieengineering.com

SCALE: 1" = 50'

JOB NO: 144-08

DWG. BY: BHK

DATE: APRIL, 2010

PM: RQ

PAGE: 2 OF 3