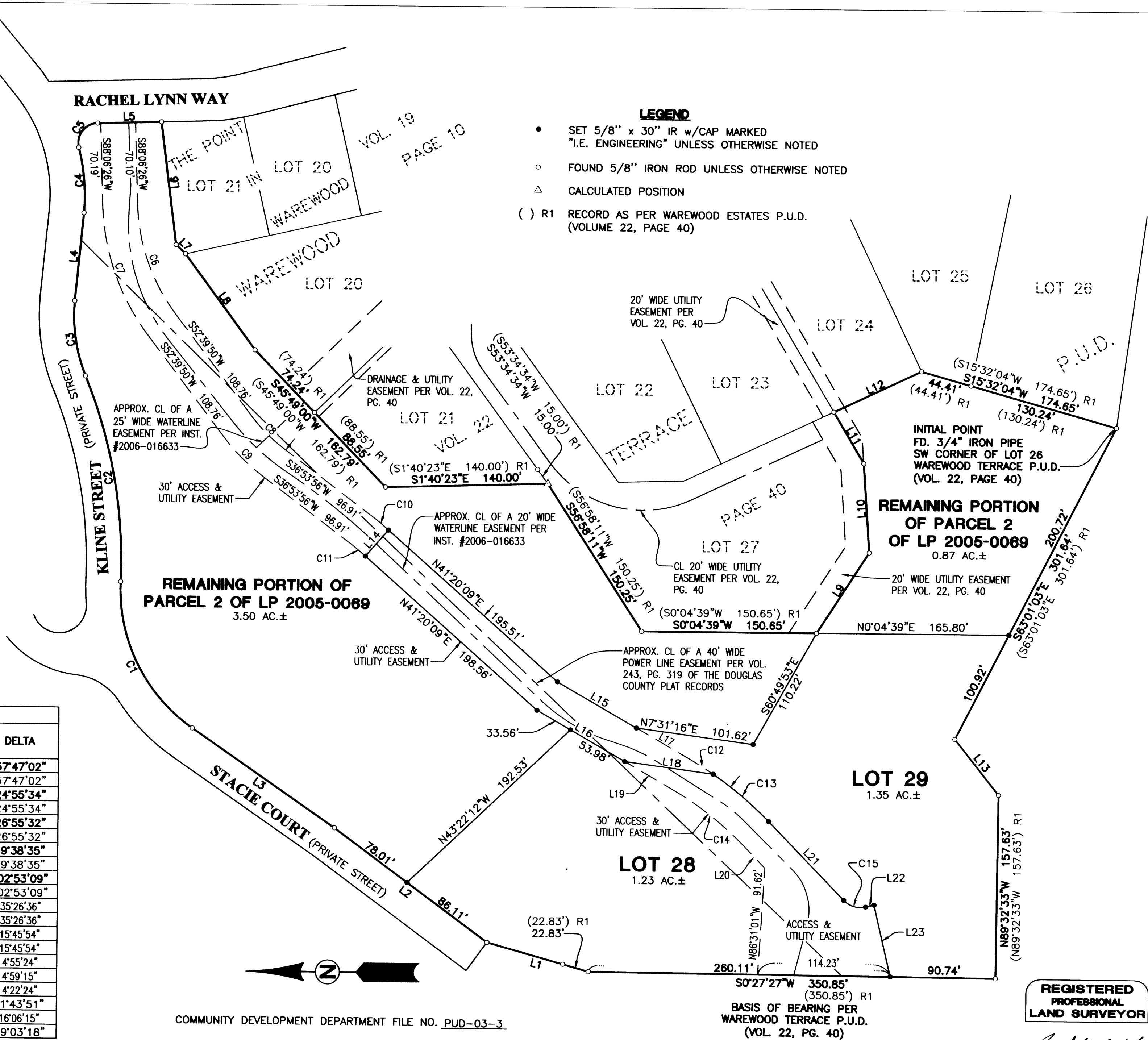


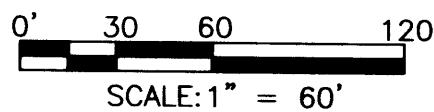
LINE TABLE		
LINE	BEARING	LENGTH
1	S15°28'15"W	90.91'
R1	(S15°28'15"W	90.91')
2	S36°22'11"W	164.12'
R1	(S36°22'11"W	164.12')
3	S34°26'37"W	149.54'
R1	(S34°26'37"W	149.54')
4	N84°30'35"W	76.08'
R1	(N84°30'35"W	76.08')
5	S1°43'07"E	54.91'
R1	(S1°43'07"E	54.91')
6	S82°42'57"W	106.30'
R1	(S82°42'57"W	106.30')
7	S43°59'54"W	11.33'
R1	(S43°59'54"W	11.33')
8	S53°28'52"W	101.95'
R1	(S53°28'52"W	101.95')
9	N57°08'22"W	82.62'
R1	(N57°08'22"W	82.62')
10	N86°01'04"E	76.70'
R1	(N86°01'04"E	76.70')
11	N59°16'39"E	51.32'
R1	(N59°16'39"E	51.32')
12	S25°09'33"E	83.21'
R1	(S25°09'33"E	83.21')
13	N51°27'32"E	60.95'
R1	(N51°27'32"E	60.95')
14	S48°39'51"E	30.00'
15	N29°43'33"E	78.61'
16	N29°43'33"E	87.54'
17	N29°43'33"E	53.78'
18	N7°31'16"E	77.02'
19	N29°43'33"E	47.90'
20	S45°49'48"W	26.73'
21	S45°49'48"W	93.58'
22	S13°13'30"E	7.39'
23	S76°46'30"W	63.15'

CURVE TABLE					
CURVE	CHORD BEARING	CHORD LENGTH	RADIUS	CURVE LENGTH	DELTA
C1	S63°22'08"W	140.12'	145.00'	146.24'	57°47'02"
( ) R1	S63°22'08"W	140.12'	145.00'	146.24'	57°47'02"
C2	N79°45'36"E	179.12'	415.00'	180.54'	24°55'34"
( ) R1	N79°45'36"E	179.12'	415.00'	180.54'	24°55'34"
C3	S81°24'01"W	65.19'	140.00'	65.79'	26°55'32"
( ) R1	S81°24'01"W	65.19'	140.00'	65.79'	26°55'32"
C4	N84°59'30"E	56.29'	165.00'	56.57'	19°38'35"
( ) R1	N84°59'30"E	56.29'	165.00'	56.57'	19°38'35"
C5	N52°44'04"W	26.59'	17.00'	30.53'	102°53'09"
( ) R1	N52°44'04"W	26.59'	17.00'	30.53'	102°53'09"
C6	S70°23'08"W	100.45'	165.00'	102.07'	35°26'36"
C7	S70°23'08"W	118.71'	195.00'	120.63'	35°26'36"
C8	S44°46'53"W	39.22'	143.00'	39.35'	15°45'54"
C9	N44°46'53"E	47.45'	173.00'	47.60'	15°45'54"
C10	S39°21'31"W	17.76'	206.69'	17.76'	4°55'24"
C11	S39°23'42"W	15.43'	177.35'	15.44'	4°59'15"
C12	S31°54'45"W	23.43'	307.00'	23.43'	4°22'24"
C13	S39°57'53"W	62.75'	307.00'	62.86'	11°43'51"
C14	S37°46'41"W	77.60'	277.00'	77.86'	16°06'15"
C15	S16°18'09"W	19.71'	20.00'	20.61'	59°03'18"



- LEGEND**
- SET 5/8" x 30" IR w/CAP MARKED "I.E. ENGINEERING" UNLESS OTHERWISE NOTED
  - FOUND 5/8" IRON ROD UNLESS OTHERWISE NOTED
  - △ CALCULATED POSITION
  - ( ) R1 RECORD AS PER WAREWOOD ESTATES P.U.D. (VOLUME 22, PAGE 40)

COMMUNITY DEVELOPMENT DEPARTMENT FILE NO. PUD-03-3



**WAREWOOD TERRACE P.U.D. PHASE II**  
 LYING IN THE NORTHWEST QUARTER OF SECTION 11, TOWNSHIP 27 SOUTH,  
 RANGE 6 WEST, WILLAMETTE MERIDIAN, DOUGLAS COUNTY, OREGON

REGISTERED  
 PROFESSIONAL  
 LAND SURVEYOR

*Ronald A. Gumbly*  
 OREGON  
 JULY 14, 1978  
 RONALD A. GUMBLY  
 1864

EXPIRES: 12/31/2010

SURVEYED BY:  
**i.e.**  
 ENGINEERING  
 809 SE Pine Street  
 Roseburg, Oregon 97470  
 PHONE (541) 673-0166  
 FAX (541) 440-9392  
 iemail@ieengineering.com

SURVEYED FOR:  
 JOHN ATKINSON  
 2823 N.W. KLINE STREET  
 ROSEBURG, OR., 97470

DWG. BY: DAF

PM: SNL

SCALE: AS NOTED

PAGE: 1 OF 2

JOB NO: 104-30

DATE: SEPT., 2009