

CURVE TABLE

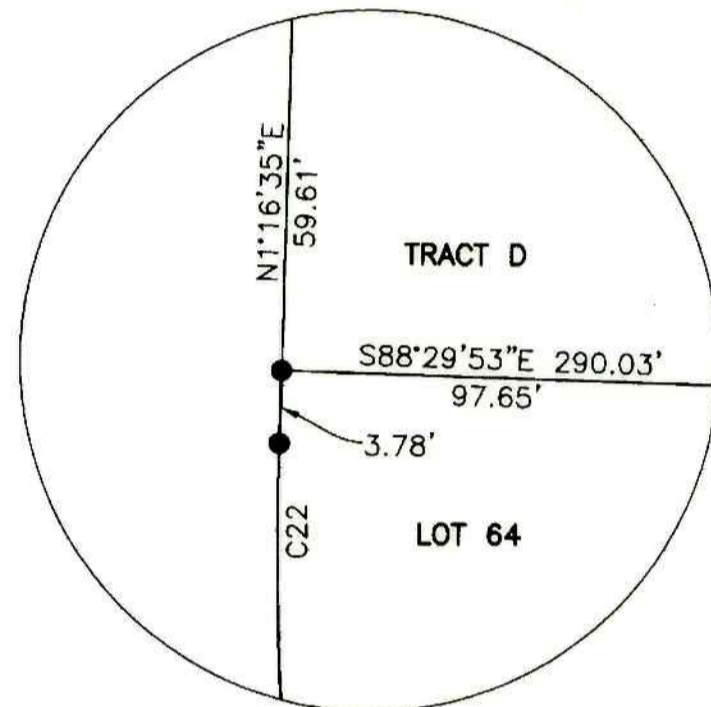
CURVE	CHORD BEARING	CHORD LENGTH	RADIUS	CURVE LENGTH	DELTA
C1	S23°06'15"W	6.51'	4.00'	7.60'	108°54'38"
C2	N56°34'14"E	46.48'	140.00'	46.69'	19°06'35"
C3	S47°55'19"W	87.06'	100.00'	90.08'	51°36'35"
C4	N38°31'56"E	41.31'	140.00'	41.46'	16°58'01"
C5	N23°37'17"E	31.34'	140.00'	31.41'	12°51'17"
C6	S19°39'20"W	8.59'	100.00'	8.59'	4°55'23"
C7	N16°28'25"E	10.56'	420.00'	10.56'	1°26'26"
C8	N12°58'56"E	40.61'	420.00'	40.63'	5°32'31"
C9	S13°18'33"W	51.49'	380.00'	51.53'	7°46'10"
C10	S9°34'28"W	0.63'	120.00'	0.63'	0°17'59"
C11	N9°49'14"E	5.73'	420.00'	5.73'	0°46'53"
C12	S29°04'29"W	79.52'	120.00'	81.06'	38°42'04"
C13	N54°41'11"E	120.75'	85.00'	134.28'	90°30'48"
C14	S87°14'37"W	50.56'	115.00'	50.98'	25°23'55"
C15	S82°33'50"E	14.43'	165.00'	14.44'	5°00'50"
C16	N89°19'15"E	32.25'	165.00'	32.30'	11°12'59"
C17	N88°10'20"W	38.11'	135.00'	38.24'	16°13'49"
C18	N66°07'02"W	19.02'	15.00'	20.60'	78°40'36"
C19	S10°49'24"W	18.31'	15.00'	19.69'	75°12'16"
C20	S26°04'29"E	5.29'	215.00'	5.29'	1°24'31"
C21	S14°23'05"E	81.94'	215.00'	82.45'	21°58'18"
C22	N12°45'05"W	89.68'	185.00'	90.59'	28°03'19"
C23	S1°03'40"E	17.54'	215.00'	17.54'	4°40'30"
C24	S62°11'38"W	21.21'	15.00'	23.56'	90°00'00"
C25	S27°48'22"E	21.21'	15.00'	23.56'	90°00'00"
C26	N77°46'04"W	29.41'	170.00'	29.44'	9°55'24"
C28	S85°39'39"W	68.42'	170.00'	68.89'	23°13'11"
C30	S69°59'46"W	24.04'	170.00'	24.06'	8°06'34"
C31	S52°06'37"W	57.38'	120.00'	57.94'	27°39'45"
C32	N28°49'14"E	96.56'	80.00'	103.66'	74°14'30"
C33	S22°49'20"W	63.96'	120.00'	64.75'	30°54'50"
C34	S0°28'03"E	32.71'	120.00'	32.81'	15°39'55"
C35	N7°55'00"W	6.96'	520.00'	6.96'	0°46'02"
C36	S5°27'15"E	47.67'	480.00'	47.69'	5°41'33"
C37	N5°17'13"W	40.76'	520.00'	40.77'	4°29'32"
C38	N0°49'17"W	40.28'	520.00'	40.29'	4°26'22"
C39	S1°40'27"W	71.68'	480.00'	71.75'	8°33'51"
C40	N3°34'35"E	39.52'	520.00'	39.53'	4°21'20"
C41	N36°19'23"W	20.10'	15.00'	22.03'	84°09'14"
C42	S88°24'24"W	26.28'	100.00'	26.35'	15°05'56"
C43	S79°12'30"W	5.76'	100.00'	5.76'	3°17'52"

C 27 N 85°27'35" W 56.95' 130.00' 57.42' 25°18'26"  
C 29 S 73°54'51" W 30.06' 130.00' 36.18' 15°56'42"

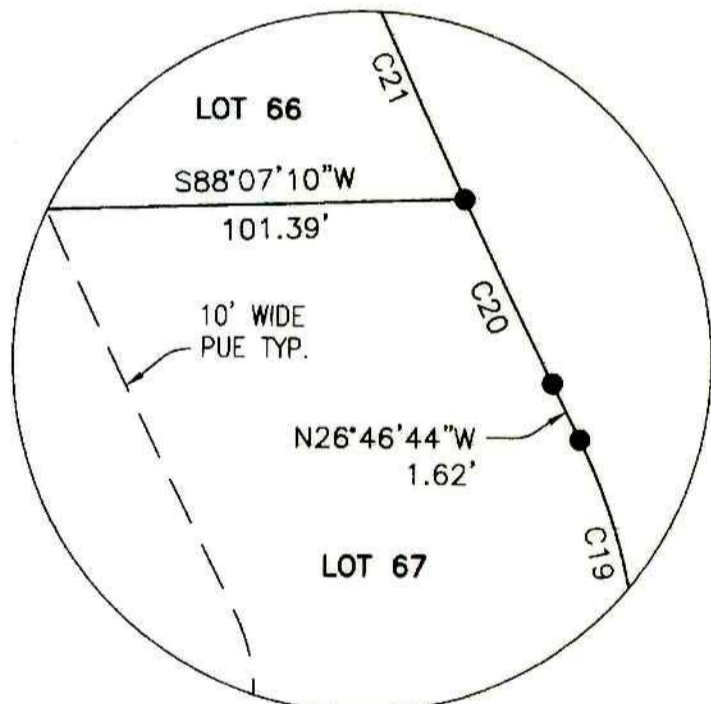
AFFIDAVIT OF CORRECTION:  
RECORDED JAN. 27, 2009 AS  
INSTRUMENT No. 2009-001211  
C.S. FILE 6568-1

CENTERLINE CURVE TABLE

CURVE	CHORD BEARING	CHORD LENGTH	RADIUS	CURVE LENGTH	DELTA
C44	S43°13'12"W	105.31'	120.00'	109.02'	52°03'08"
C45	S13°18'33"W	54.20'	400.00'	54.24'	7°46'10"
C46	S35°02'25"W	86.47'	100.00'	89.42'	51°13'54"
C47	N80°17'58"E	67.23'	100.00'	68.57'	39°17'12"
C48	S88°10'20"E	42.35'	150.00'	42.49'	16°13'49"
C49	N12°45'05"W	96.96'	200.00'	97.93'	28°03'19"
C50	N86°34'04"E	105.68'	150.00'	108.00'	41°15'09"
C51	N28°49'14"E	120.70'	100.00'	129.58'	74°14'30"
C52	N1°10'19"W	124.09'	500.00'	124.41'	14°15'23"



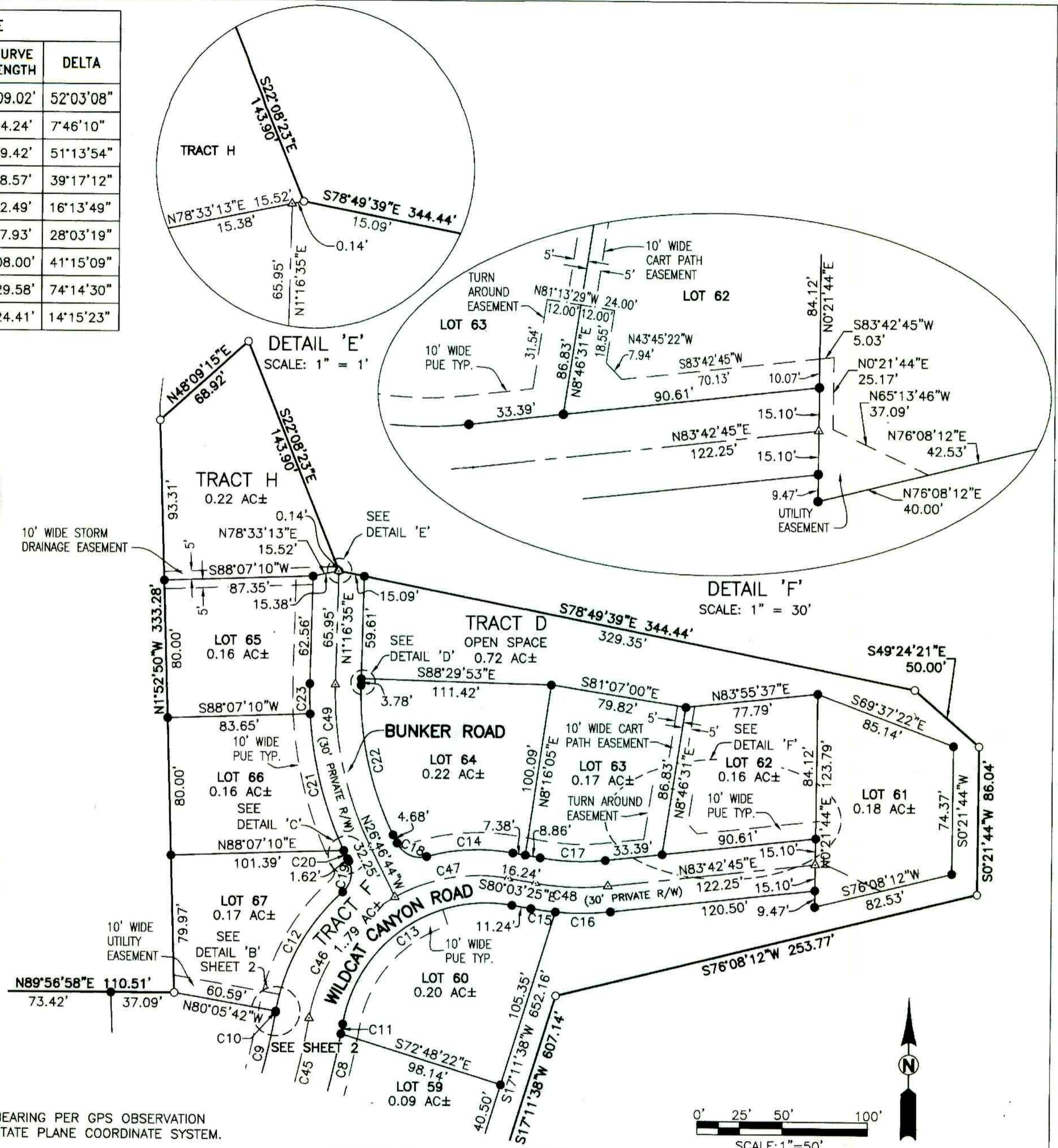
DETAIL 'D'  
SCALE: 1" = 10'



DETAIL 'C'  
SCALE: 1" = 5'

- NOTE:**
- BASIS OF BEARING PER GPS OBSERVATION OREGON SOUTH STATE PLANE COORDINATE SYSTEM.
  - SEE THE CC&R'S FOR THE USES AND OWNERSHIP FOR THE OPEN SPACES AND PRIVATE ROADWAYS.
  - "R/W" DENOTES RIGHT-OF-WAY.

- LEGEND:**
- SET 5/8" x 30" IRON ROD w/CAP MARKED "I.E. ENGINEERING" UNLESS OTHERWISE NOTED
  - FOUND 5/8" IRON ROD UNLESS OTHERWISE NOTED
  - ▲ CALCULATED POSITION



<b>REGISTERED PROFESSIONAL LAND SURVEYOR</b>		<b>FAIRWAY ESTATES AT UMPQUA GOLF RESORT PUD PHASE 2</b>	
 OREGON JULY 14, 1978 RONALD A. GUMBLY 1954		LYING IN THE SW 1/4 OF SEC 18, T 25 S, R 5 W, WILLAMETTE MERIDIAN, DOUGLAS COUNTY, OREGON	
SURVEYED FOR: L&H LUMBER 859 LOOKINGGLASS ROAD ROSEBURG, OR 97470		SURVEYED BY:  809 SE Pine Street Roseburg, Oregon 97470 PHONE (541) 673-0166 FAX (541) 440-9392 email@ieengineering.com	
SCALE: AS SHOWN	DATE: AUG., 2008	JOB NO: 140-90T13 DWG. BY: JDL PM: SNL	PAGE: 3 OF 3