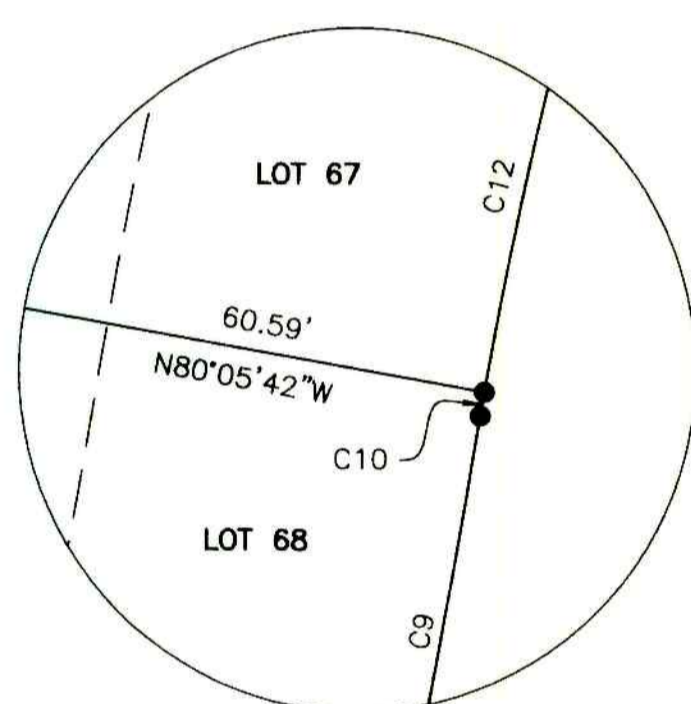
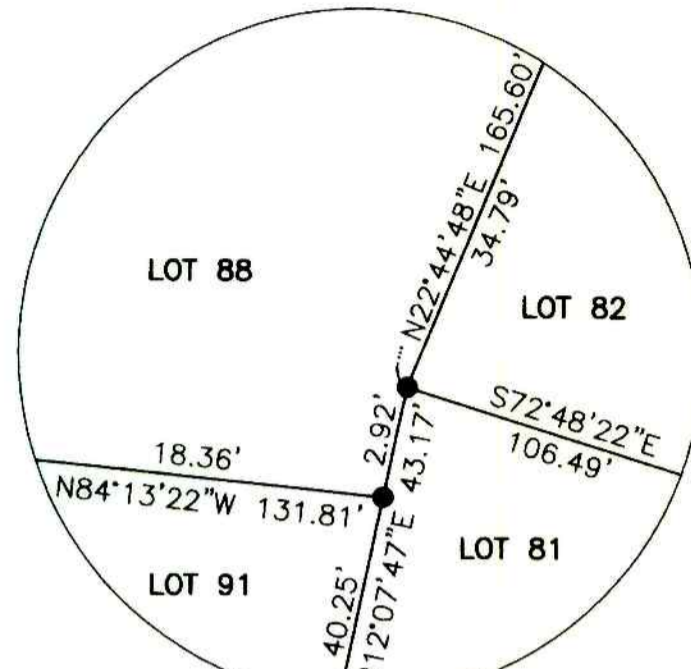


NOTE:

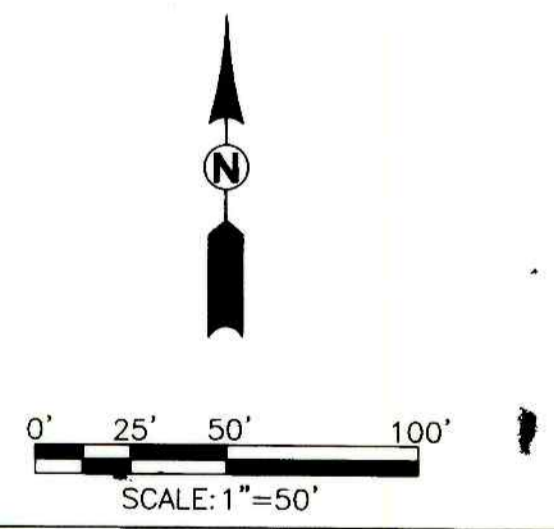
1. BASIS OF BEARING PER GPS OBSERVATION OREGON SOUTH STATE PLANE COORDINATE SYSTEM.
2. SEE SHEET 3 FOR LINE AND CURVE DATA.
3. SEE THE CC&R'S FOR THE USES AND OWNERSHIP FOR OPEN SPACES AND PRIVATE ROADWAYS.
4. "R/W" DENOTES RIGHT-OF-WAY.



* AFFIDAVIT OF CORRECTION:
RECORDED JAN. 27, 2009 AS
INSTRUMENT No. 2009-0012H
COUNTY CLERK RECORDS
C.S. FILE 65/68-1

LEGEND:

- SET 5/8" x 30" IRON ROD w/CAP MARKED "I.E. ENGINEERING" UNLESS OTHERWISE NOTED
- FOUND 5/8" IRON ROD UNLESS OTHERWISE NOTED
- ▲ CALCULATED POSITION



<p>REGISTERED PROFESSIONAL LAND SURVEYOR</p> <p><i>Ronald A. Qumby</i></p> <p>OREGON JULY 14, 1978 RONALD A. QUMBY 1854</p> <p>EXPIRES: 12/31/2010</p>	<p align="center">FAIRWAY ESTATES AT UMPQUA GOLF RESORT PUD PHASE 2</p> <p align="center">LYING IN THE SW 1/4 OF SEC 18, T 25 S, R 5 W, WILLAMETTE MERIDIAN, DOUGLAS COUNTY, OREGON</p>	
	<p>SURVEYED FOR: L&H LUMBER 859 LOOKINGGLASS ROAD ROSEBURG, OR 97470</p>	<p>SURVEYED BY: i.e. ENGINEERING 809 SE Pine Street Roseburg, Oregon 97470 PHONE (541) 673-0166 FAX (541) 440-9392 iemal@ieengineering.com</p>
<p>SCALE: AS SHOWN</p>	<p>JOB NO: 140-90T13 DATE: AUG., 2008</p>	<p>DWG. BY: JDL PM: SNL PAGE: 2 OF 3</p>